

Harmonious Society



China Team
20th October, Tsukuba, Japan

Background

◆ **“Harmony Society”** : Every people is happy but everything is OK (Sustainable Development, Low Carbon,

“CPC sixth plenary session of the 16th Central Commission of CPC ”

Beijing

Oct,8th-10th, 2006

<http://www.gov.cn>



◆ **“Construct New Countryside”**, The eleventh Five-year Plan

◆ **“Energy intensity reduced 20% by 2010”**, The eleventh Five-year Plan

What is the mean of this issue

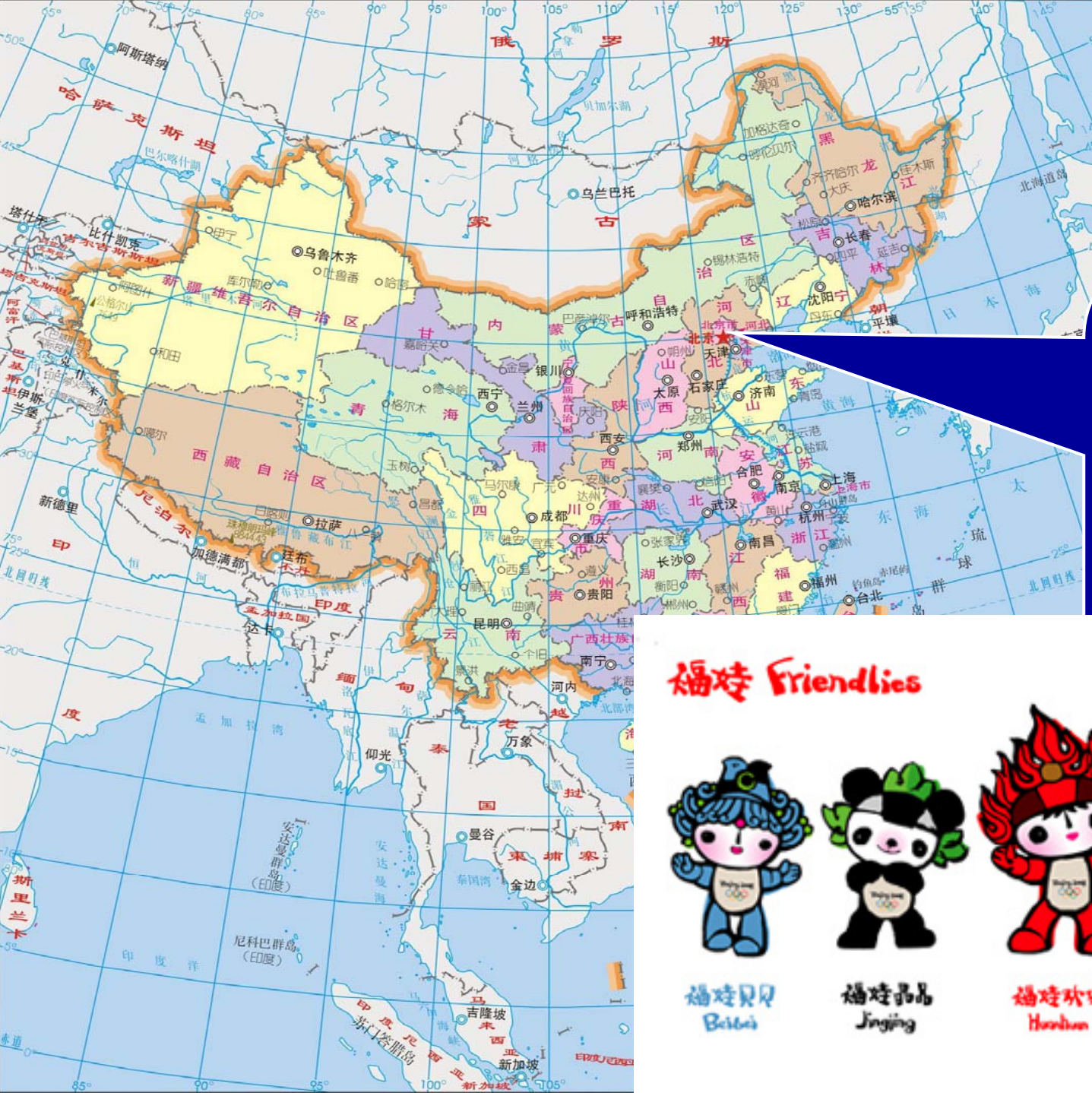
A significant measure to narrow the gap between the poor and the rich, the urban and the rural.

A determination of carry out Sustainable Development by Chinese government

A new transition during China social and economic development

A solemn promise to Chinese and the global

Harmony Beijing Scenario



Area:16410 squ.km2
 Population:14,927,000
 GDP:690.25 billion ¥
 Energy consumption:55.22 mtce

福娃 Friendlies



福娃贝贝
Beibei

福娃晶晶
Jingjing

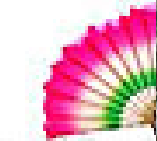
福娃欢欢
Huahua

福娃迎迎
Yingying

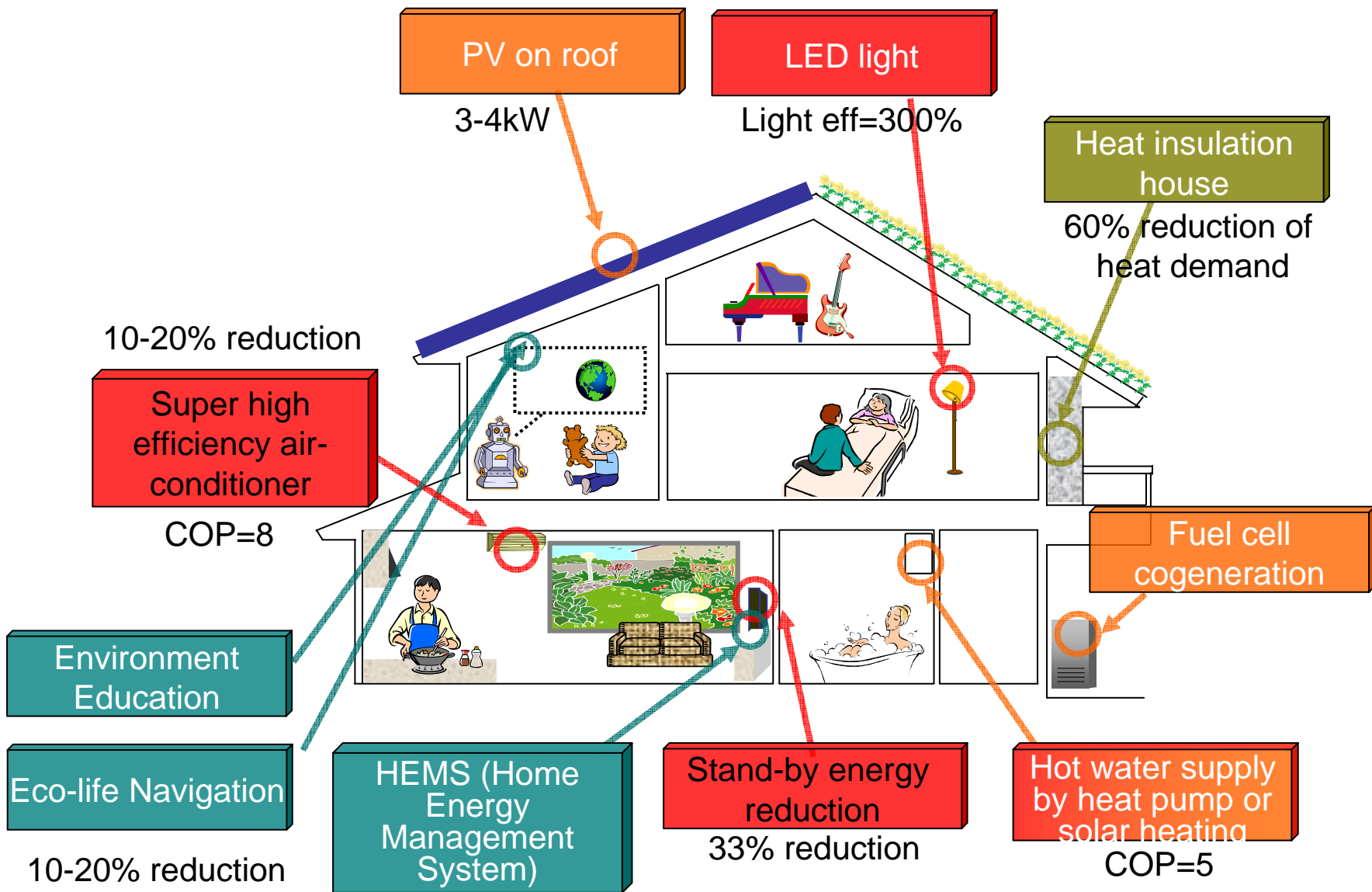
福娃妮妮
Nini

Scenario

- **A: high economic growth(keep to support more job); soft population control; more environment friendly technology be used; actively adjust energy structure, strong countermeasure to energy intensity reduction, increase renewable and biomass energy share; more transparency policy, give common people more chance to take part in public affairs;**
- **B: high economic growth(keep to support more job); soft population control; more environment friendly technology be used; actively adjust energy structure, strong countermeasure to energy intensity reduction, increase renewable and biomass energy share; more transparency policy, give common people more chance to take part in public affairs;**



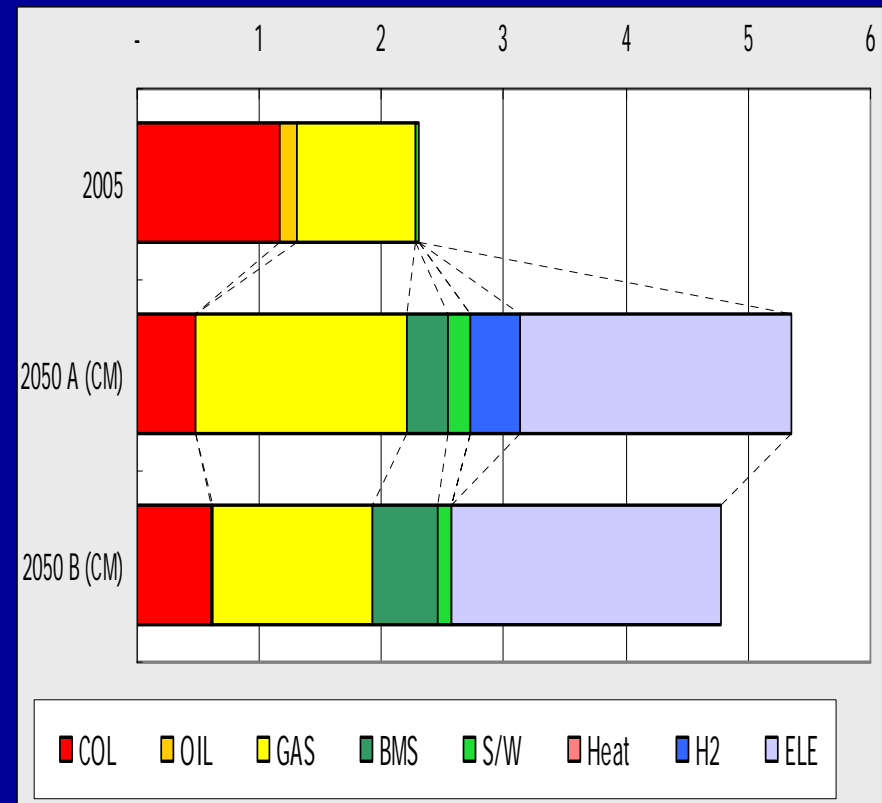
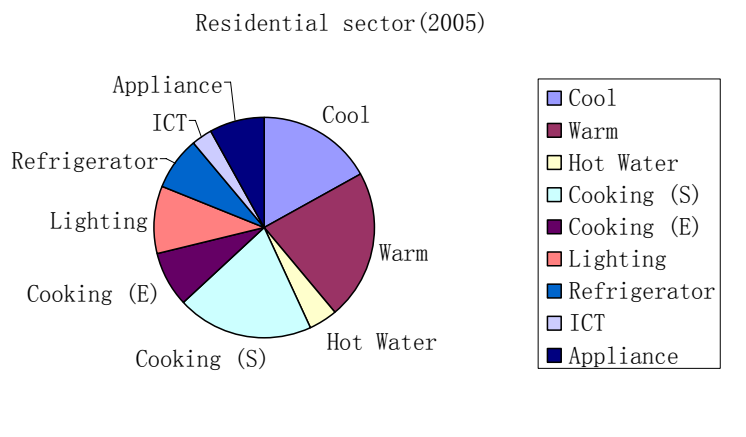
Depict Future Image: Residential sector in 2050



- Efficient use
- Infrastructure
- New energy
- Eco-lifestyle

Residential sector

Model



Thank your attention!