

# **The latest version of AIM/Enduse Model**

**Go Hibino**  
**Fuji Research Institute Corporation**

The 8th AIM International Workshop  
13-15, March 2003

At Ohyama Memorial Hall

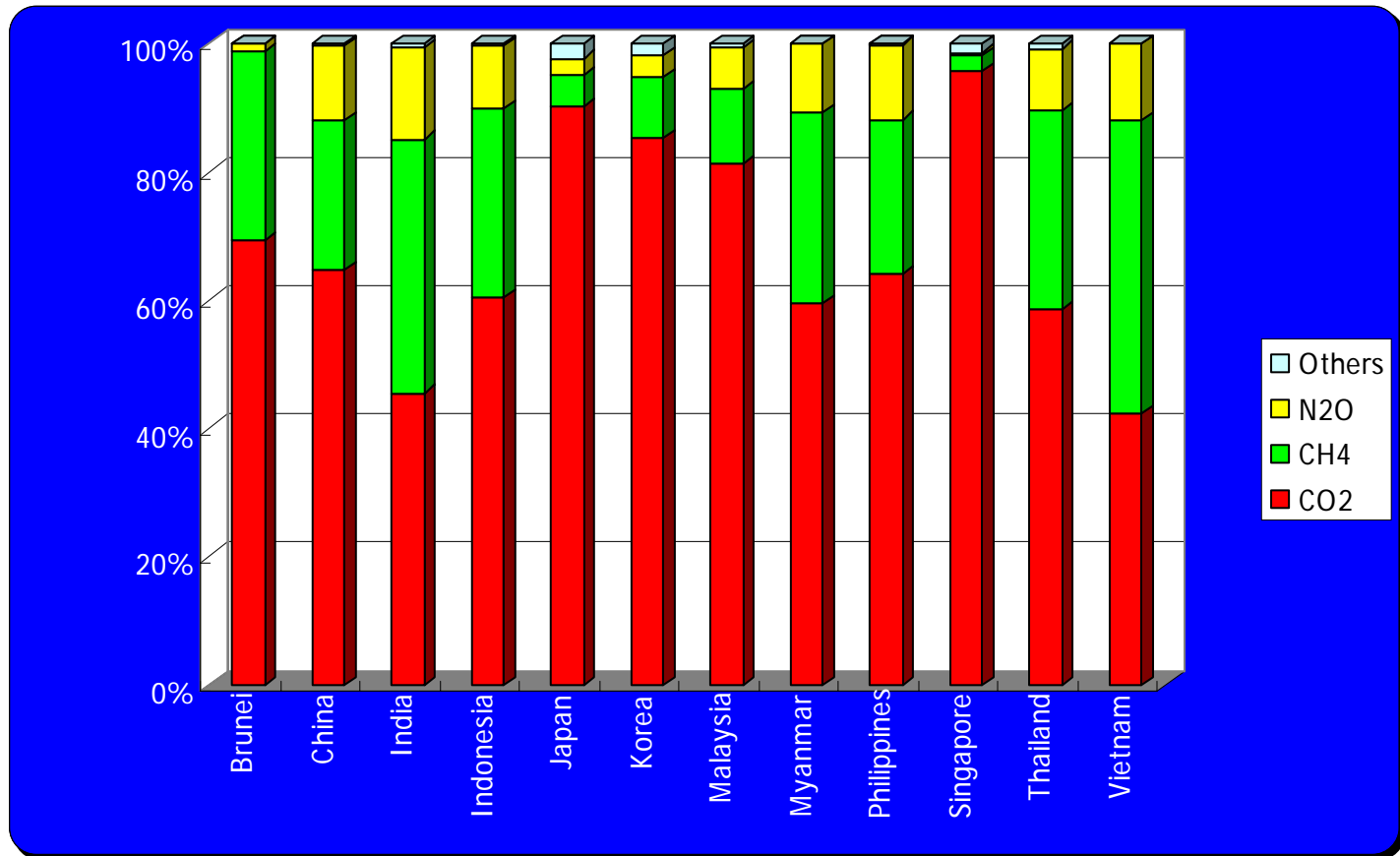
# The latest version of AIM/Enduse Model

---

- 1) Module to estimate CH<sub>4</sub> and N<sub>2</sub>O emission
- 2) Module to estimate PM emission and analyze the effect of removal processes.
- 3) Integrate country model and LPS/area source model
- 4) Future works

# 1) Module to estimate CH<sub>4</sub> and N<sub>2</sub>O emission

## a. Greenhouse gas emission share in Asia countries



Source : IEA

# 1) Module to estimate CH<sub>4</sub> and N<sub>2</sub>O emission

---

## b. Main source of CH<sub>4</sub> and N<sub>2</sub>O emission

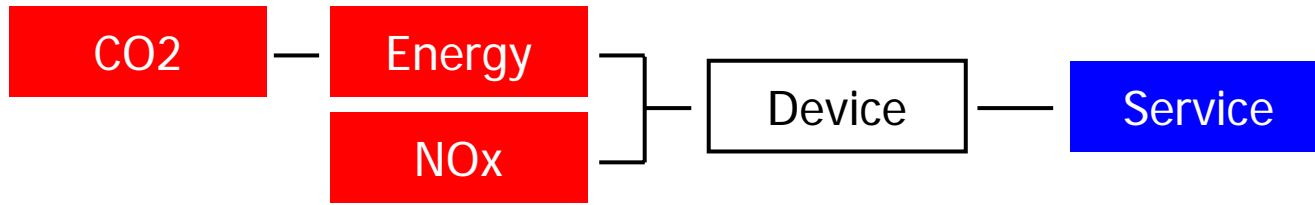
Classification	Source	CH <sub>4</sub>	N <sub>2</sub> O
Energy production	Coal Mines		
	Oil Production/Refining		
	Gas Production/Transmission/Distribution		
Enteric Fermentation	Cattle		
	Buffalo		
	Sheep		
	Goats		
	Camels		
	Horses		
	Mules and Asses		
	Swines		
Rice Cultivation	Paddy Rained Flood Prone		
Field Burning of Agr. Residue	Carbon		
	Nitrogen		
Biomass Burning	Charcoal Production		
	Fuel Wood		
	Charcoal Consumption		
	Dung		
Agriculture Soil	Synthetic Fertilizers		

# 1) Module to estimate CH4 and N2O emission

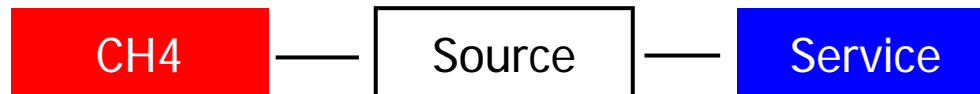
---

## c. Emission source in AIM/Enduse model

### Energy Device



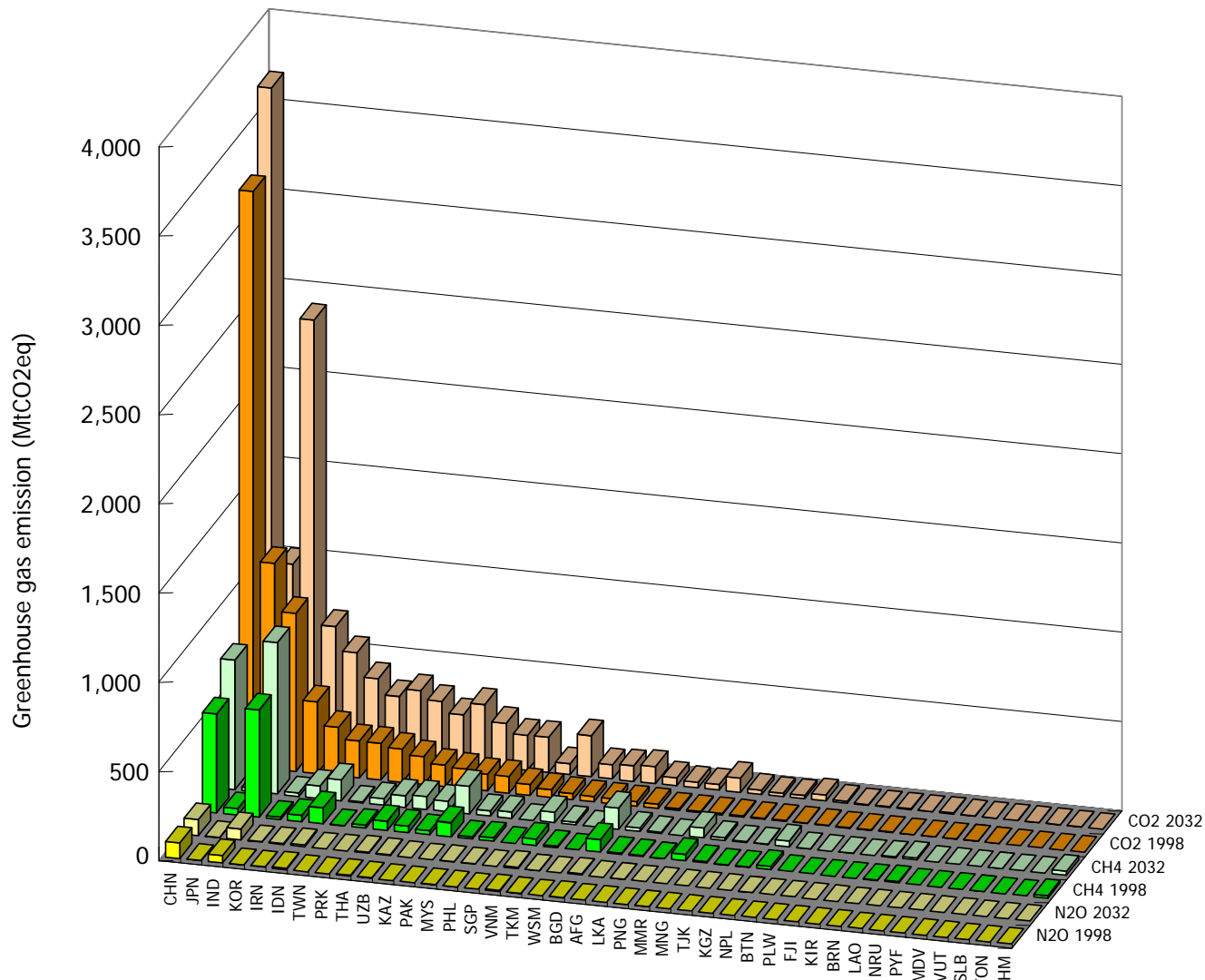
### CH4 Emission Source



- Paddy field area
- Livestock heads
- Coal production ...

# 1) Module to estimate CH4 and N2O emission

## d. CO<sub>2</sub>, CH<sub>4</sub>, N<sub>2</sub>O Emission estimated with AIM/Enduse model



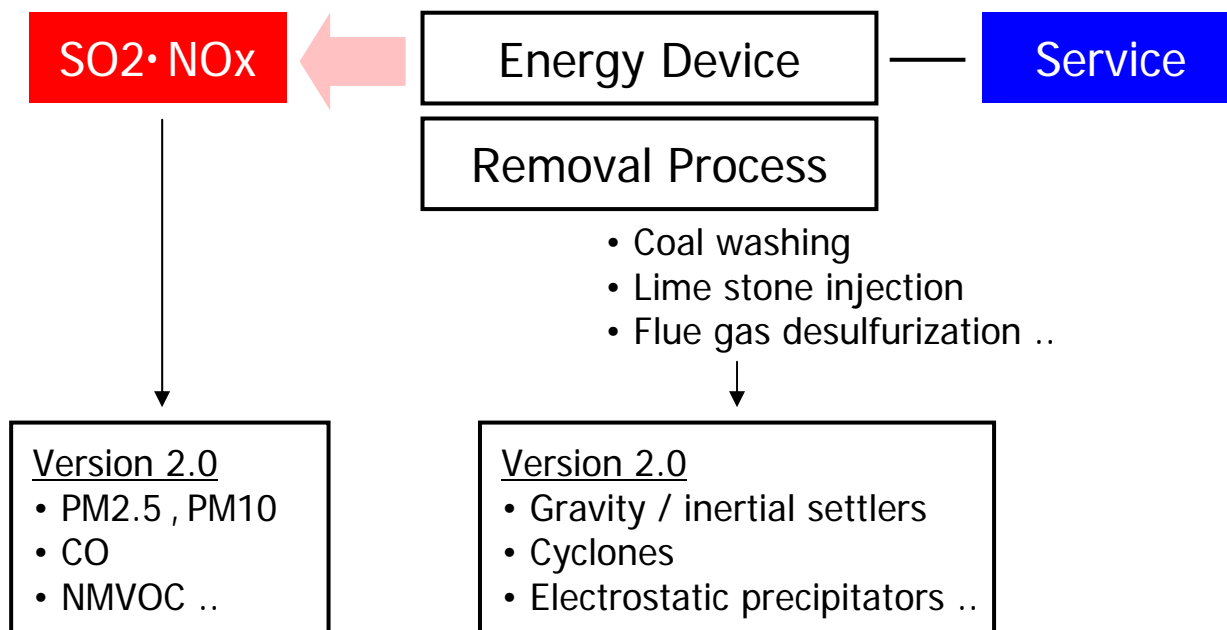
## 2) Module to estimate PM emission and analyze the effect of removal processes

---

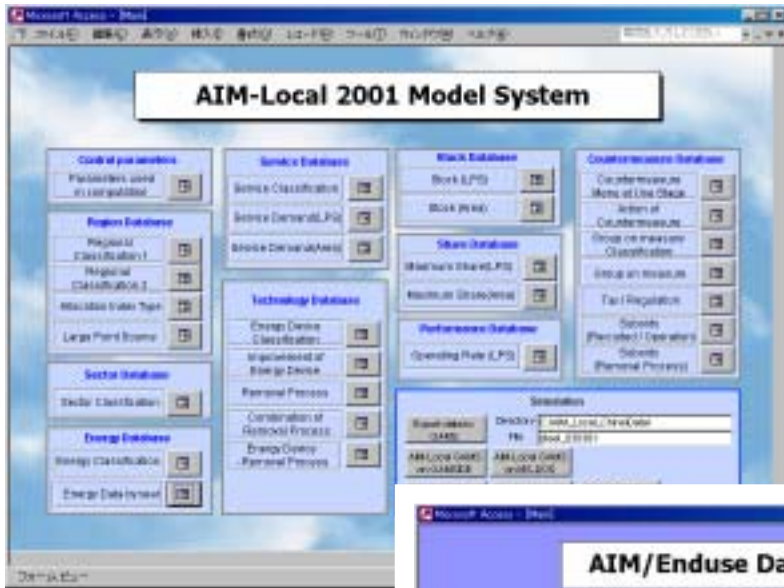
### Without removal process



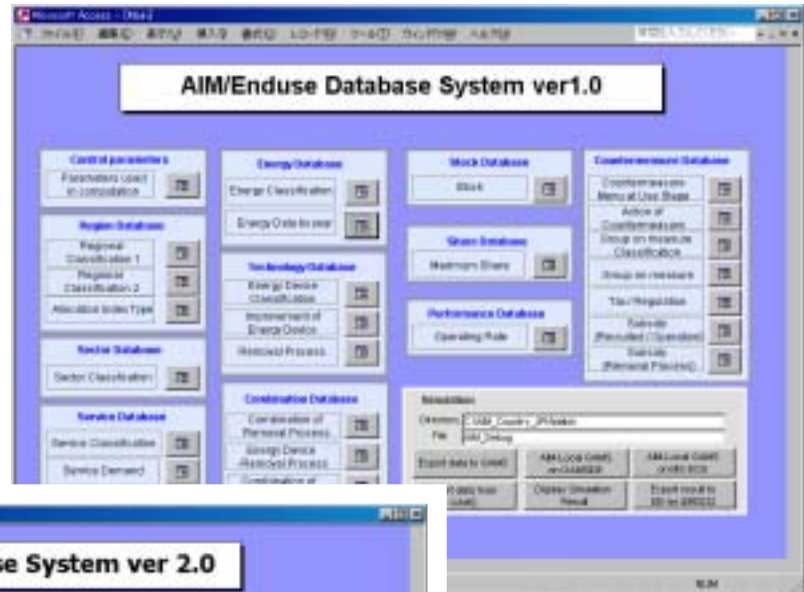
### With removal process



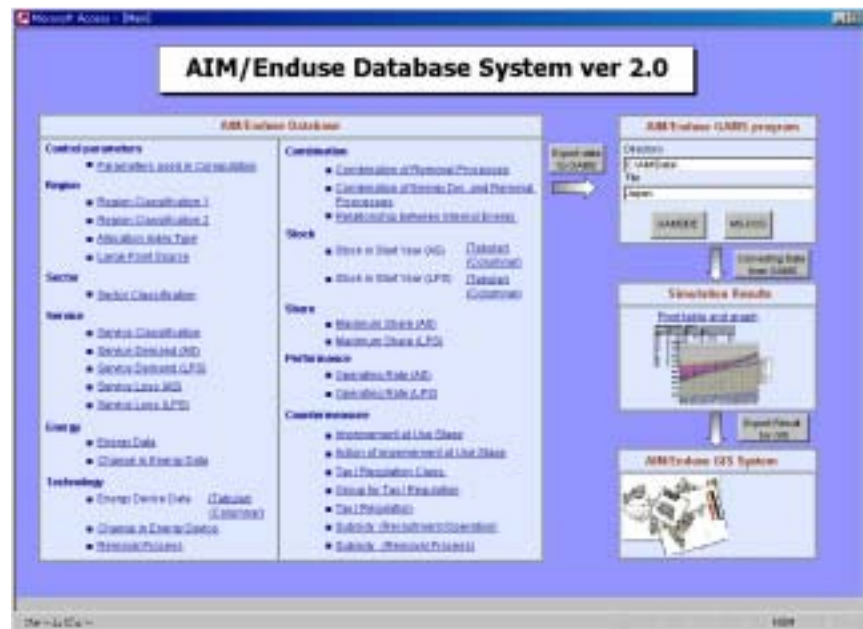
### 3) Integrate country model and LPS/area source model



March, 2002  
LPS/area source model



September, 2003  
Country model



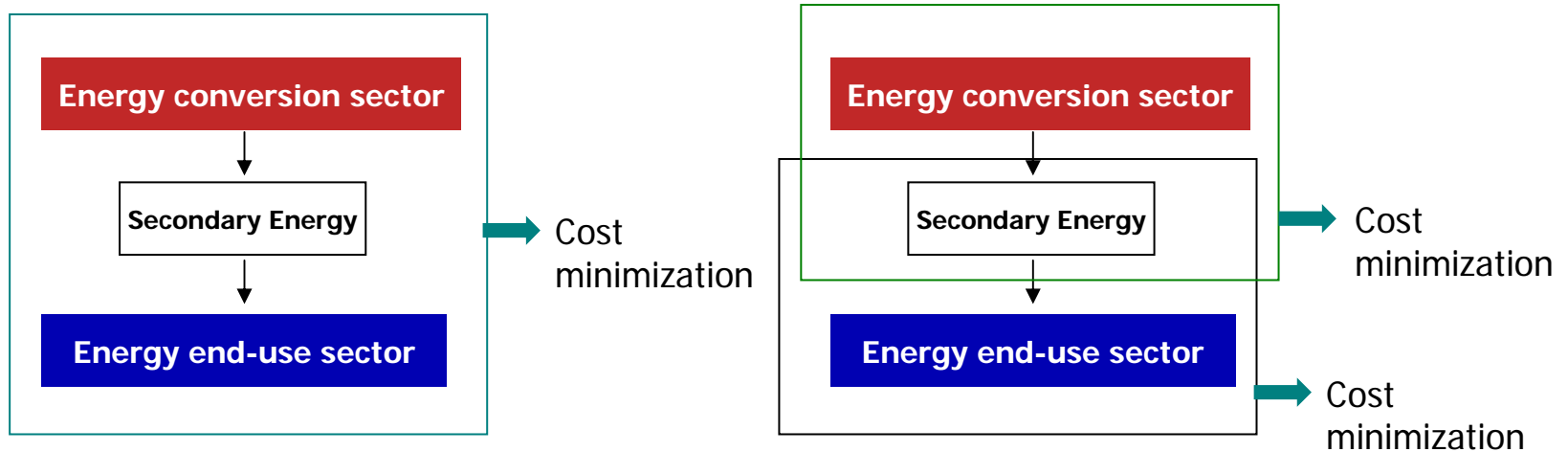
March, 2003



## 4) Future work

---

- 1) Solve the problem in energy conversion sector and energy end-use sector, respectively



- 2) Module to estimate future emission without GAMS

