

New Activities of CGE Model Development

21th Feb. 2010

Kyoto University

Shinichiro Fujimori, Toshihiko Masui
and Yuzuru Matsuoka

Presentation outline

- Current issues in CGE modeling activities
 - Original data issues
 - Model structures
- Identification of the issues
- Proposition of solutions to those issues

Climate change and CGE model

CGE models participated in EMF21

- CGE model simulation contributed to the climate change issue
 - GHG, Mitigation cost and Economic impact
- A lot types of / similar models have been developed
 - AIM/CGE, SGM

Model	Model Type
AIM	Multi-Sector General Equilibrium
AMIGA	Multi-Sector General Equilibrium
GTEM	Multi-Sector General Equilibrium
GEMINI-E3	Multi-Sector General Equilibrium
EU-PACE	Multi-Sector General Equilibrium
EDGE	Multi-Sector General Equilibrium
EPPA	Multi-Sector General Equilibrium
IPAC	Multi-Sector General Equilibrium
SGM	Multi-Sector General Equilibrium
WIAGEM	Multi-Sector General Equilibrium

Purpose of this presentation

- Answer to those questions

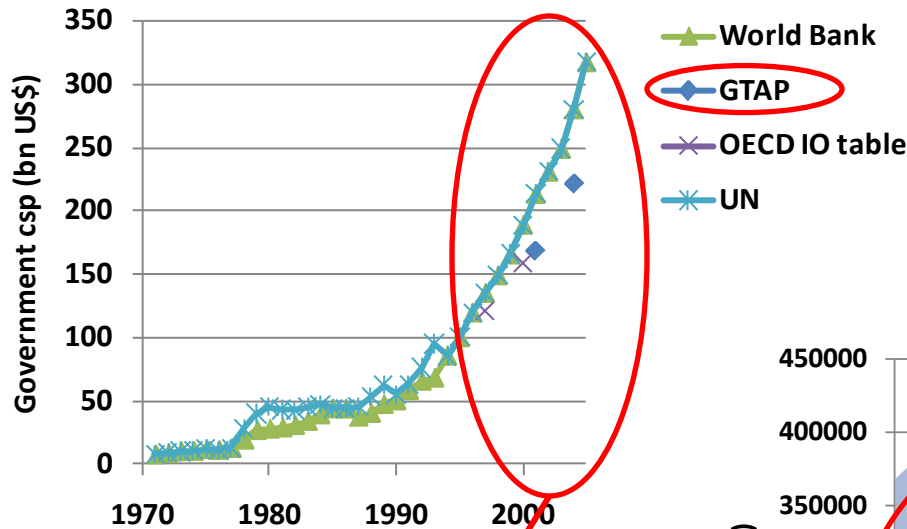
- What is needed to the CGE modeling activities?

- Original data issues
 - Model structures

Validate the results with the historical statistics

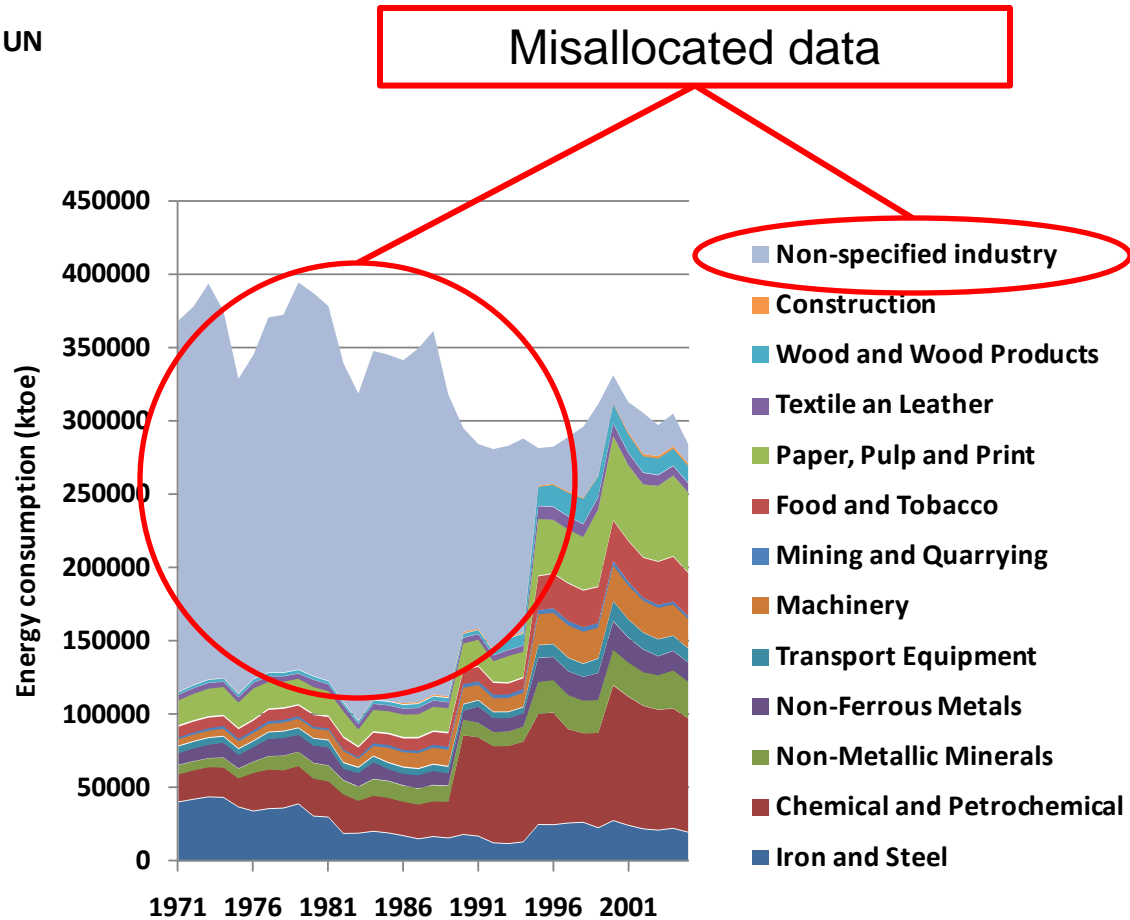
- How can we overcome the issues?

Original data issues



China's government consumption

GTAP is not consistent with original statistics



US industry energy consumption (IEA Energy balance)

Purpose of this presentation

- Answer to those questions

- What is needed to the CGE modeling activities?

- Original data issues

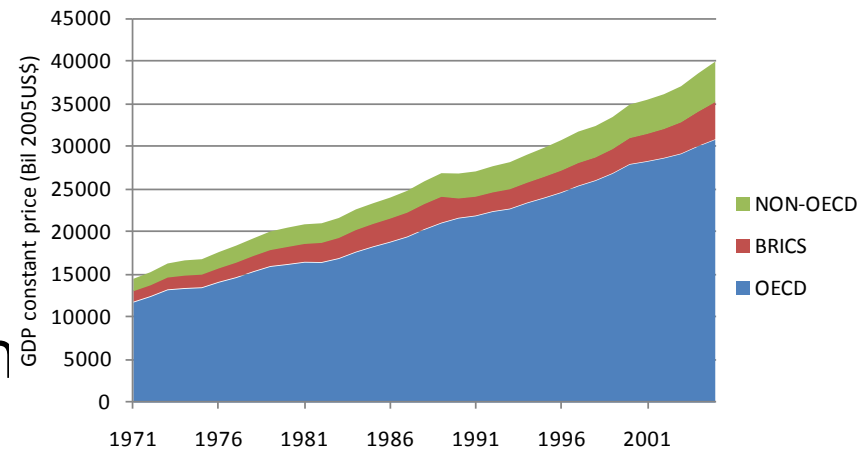
- Model structures

Validate
CGE simulation results
historical statistics

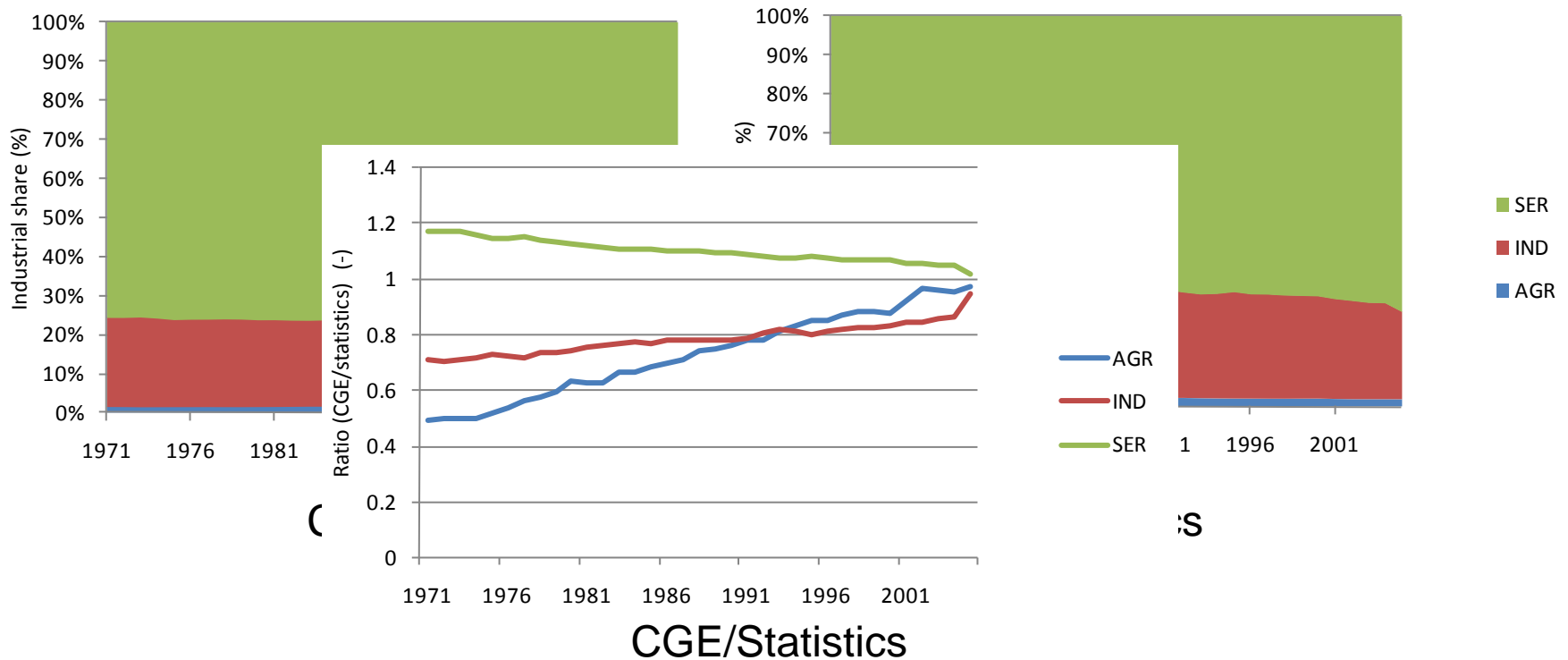
- How can we overcome the issues?

Frameworks and key assumption

- Regions; 3 (OECD, BRICs, non-OECD)
- Period; 2005 → 1971 (1 year step)
- Exogenous parameters
 - GDP
 - Saving propensity
 - Government consumption
 - OECD's CPI
 - Differences of factor prices among sectors (agr, fossil fuel mining, industry, service sectors)



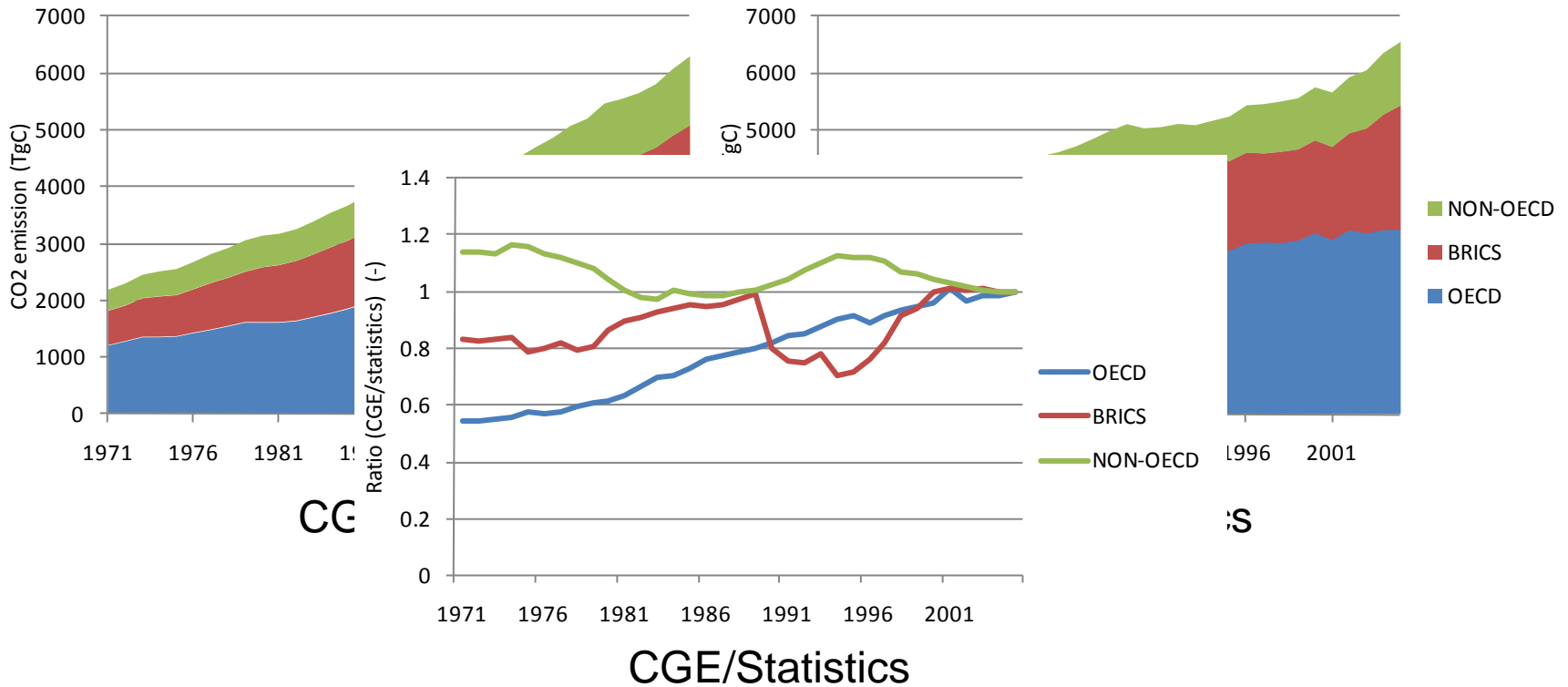
Industrial structure in OECD



- CGE : non-change industrial structure
- Statistics : change industrial structure

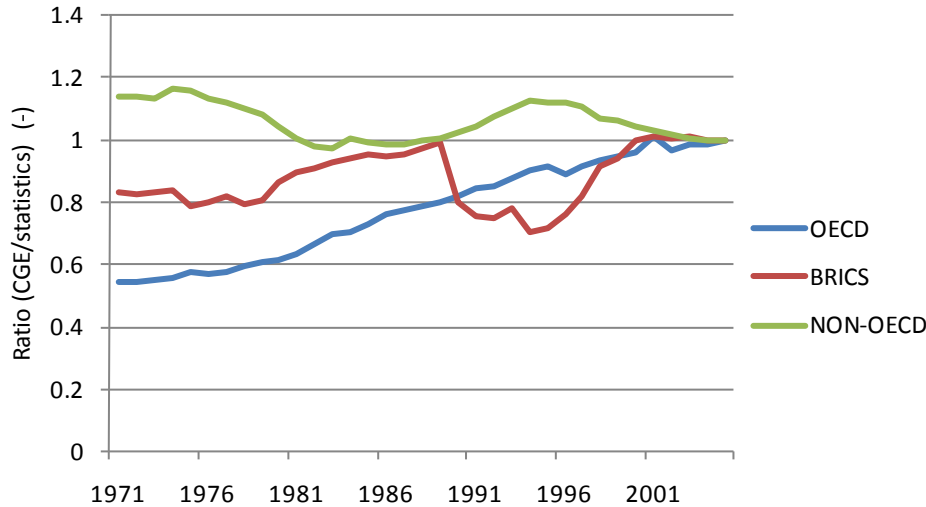
Results(1)

CO2 emissions

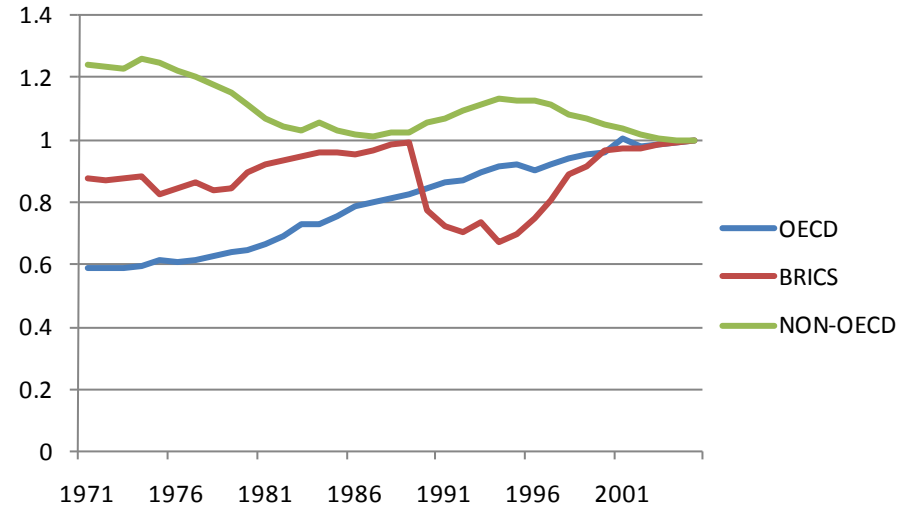


- CGE < Statistics
- OECD is the most different

CO2 emissions and energy consumption



CO2 emission



Energy consumption

- Energy consumption and CO2 emissions show similar trajectories
- Energy consumption is the key issue

Discussions

- What makes the difference between statistics and CGE?

Production function

- How can production functions be modified?

Productivity, Energy efficiency

- Does it make any improvements to the forecasting simulation?

Empirical evidences for changing the model assumptions

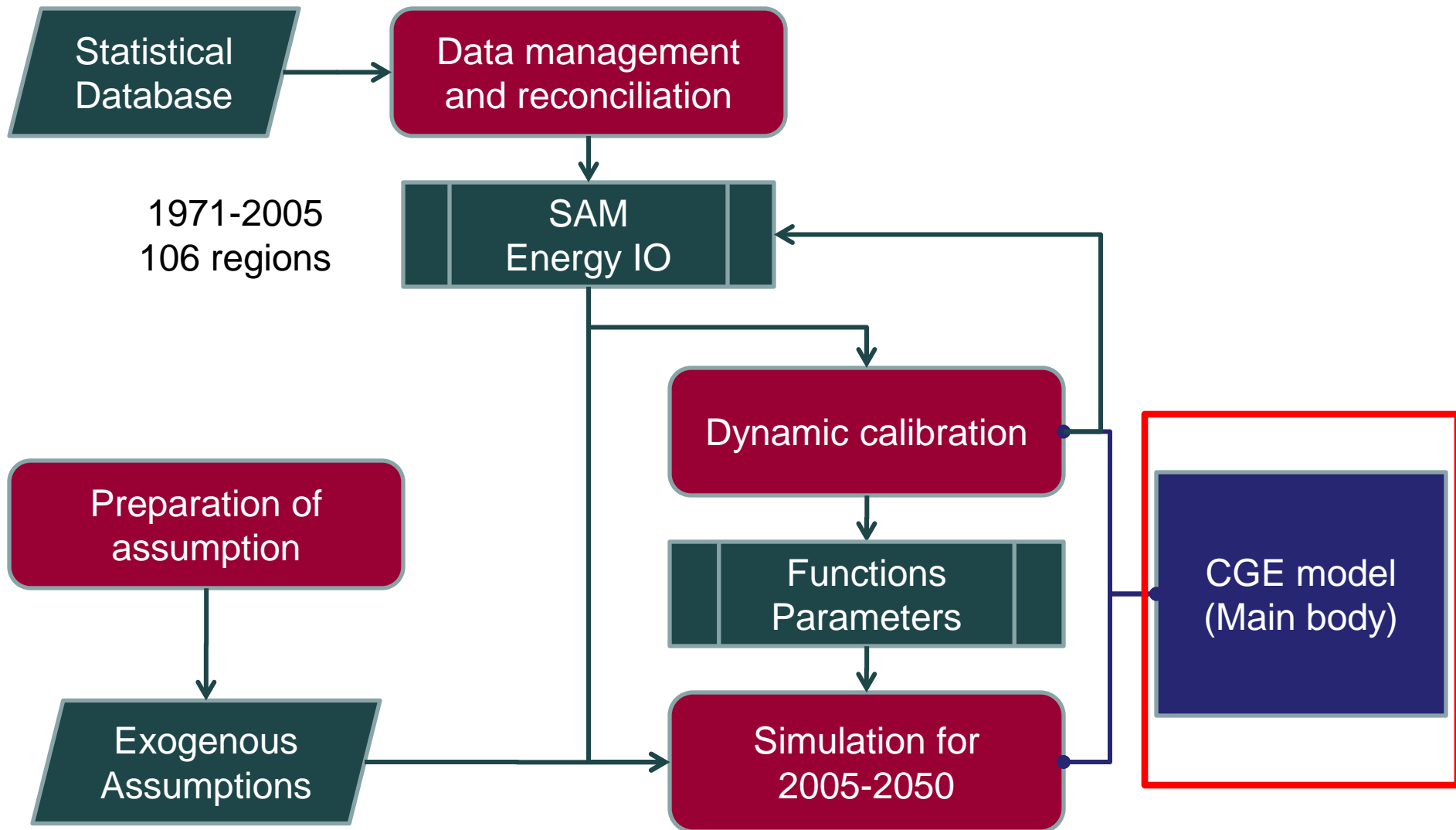
- Are there any other functions need to be modified?

Trade and consumption function

Purpose of this presentation

- Answer to those questions
 - What is needed to the CGE modeling activities?
 - Original data issues
 - Model structures
 - How can we overcome the issues?

Overview of the model development

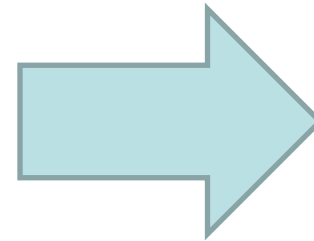


Model characteristics

- Based on IFPRI's model (Lofgren, 2002)
- Expansion
 - Regions; [World (30-40 regions)] / [Country]
 - Period; 1971-2050
 - Productive activities; 25-30 (multi-power sectors)
 - Institutional sectors; Household, Government, Enterprise
 - Dynamic Recursive
 - World market for each goods

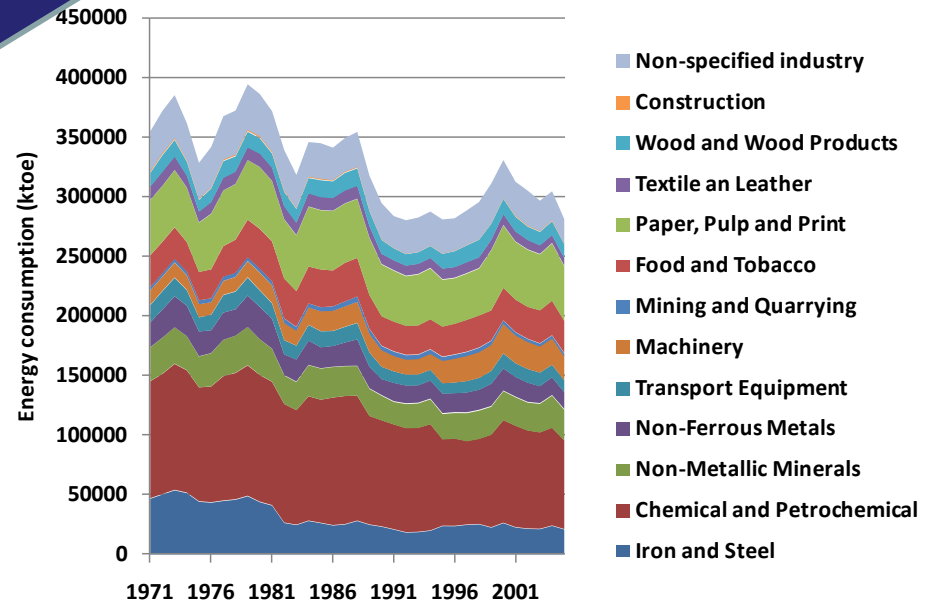
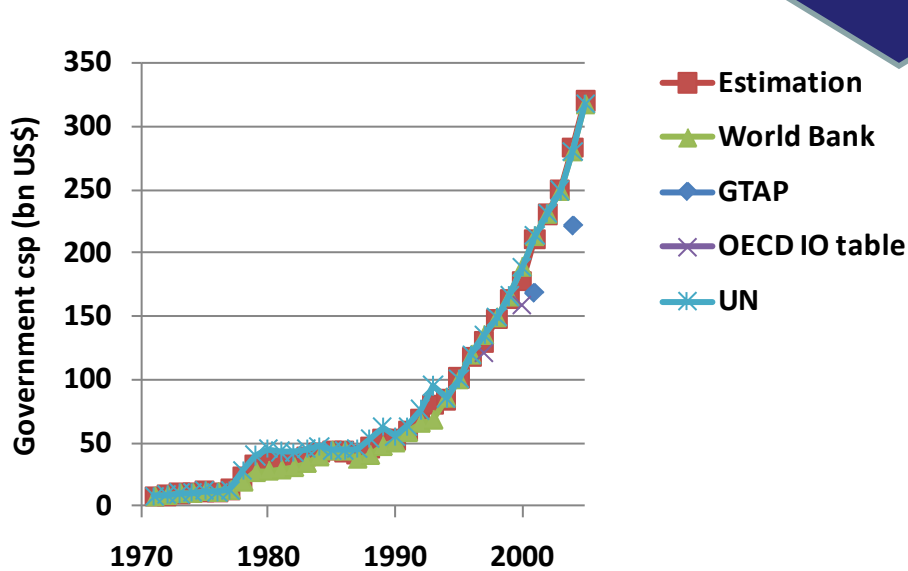
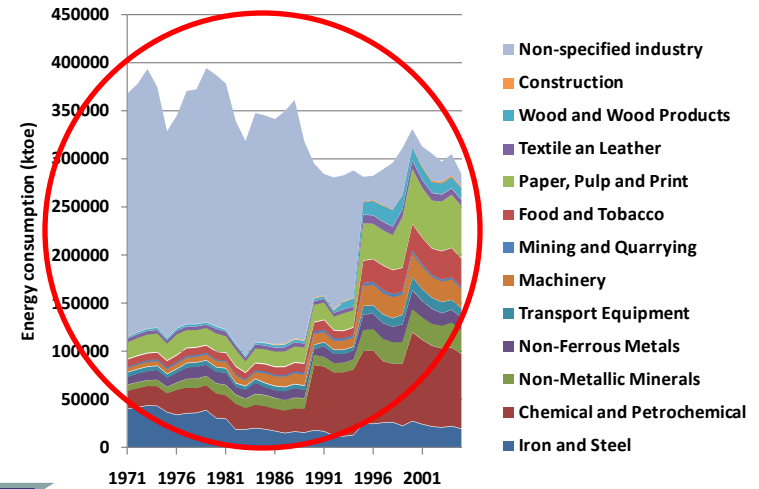
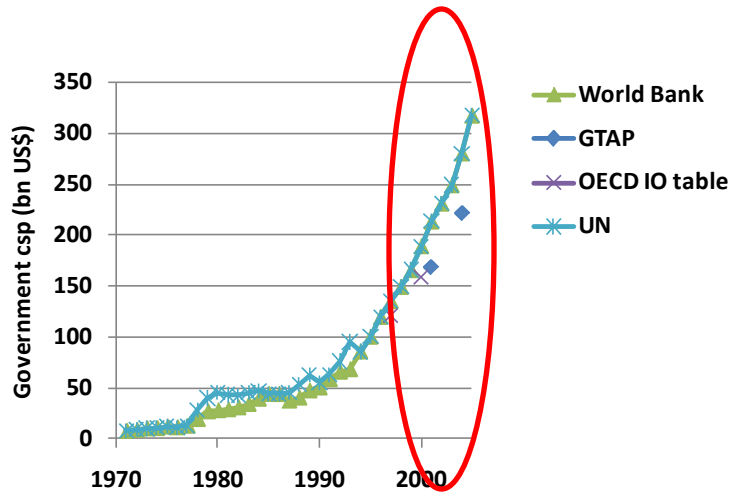
Data management and reconciliation

- Main purposes
 - Supplement missing data
 - Reconcile the inconsistent data
- Data management platform
 - GAMS code
 - EXCEL and GDX file
- Using Historical statistics
 - International and country statistics
- Easy to control sector and region classifications



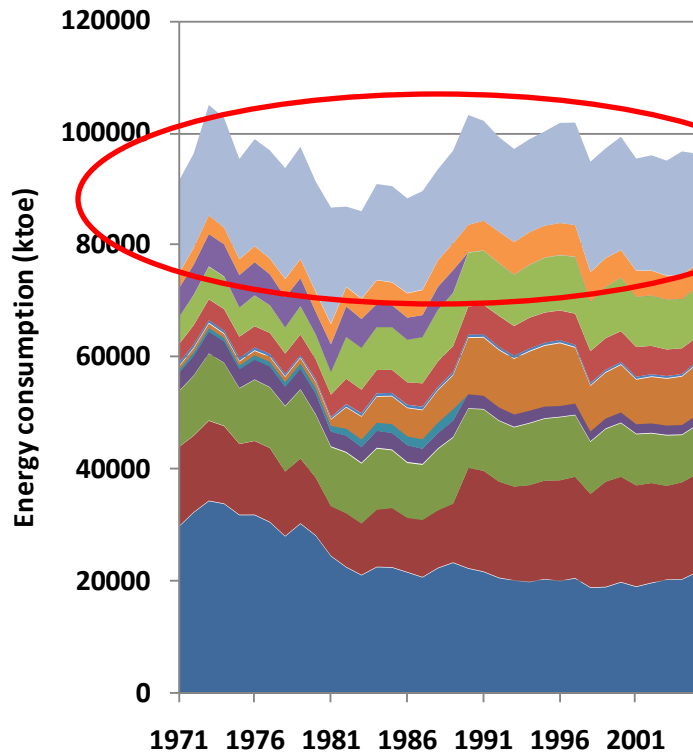
Almost
finished

Reconciliation results

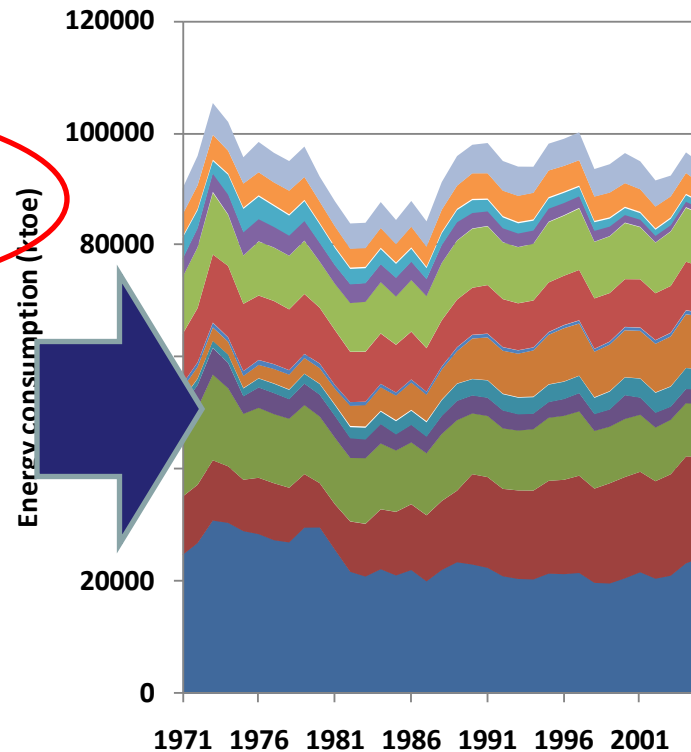


Japan

Industrial energy consumption



IEA Energy balances

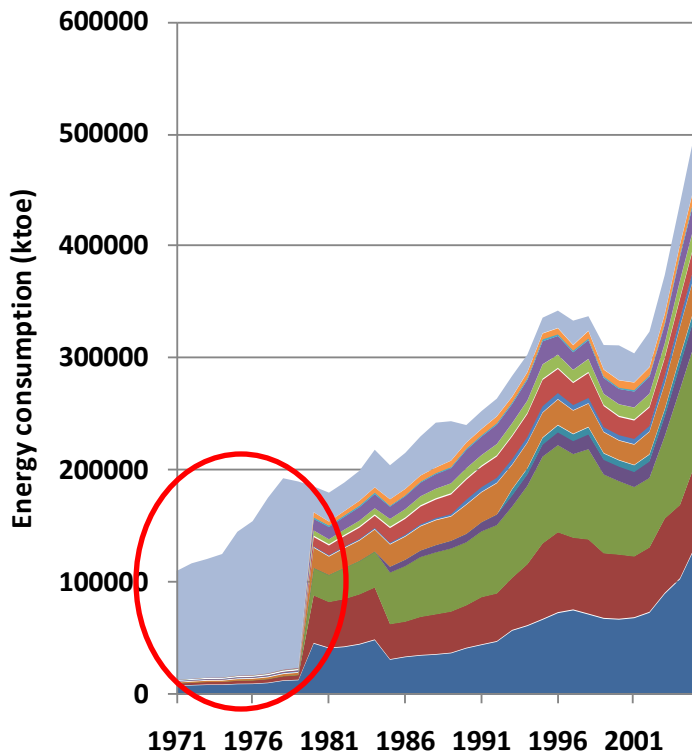


Reconciliation results

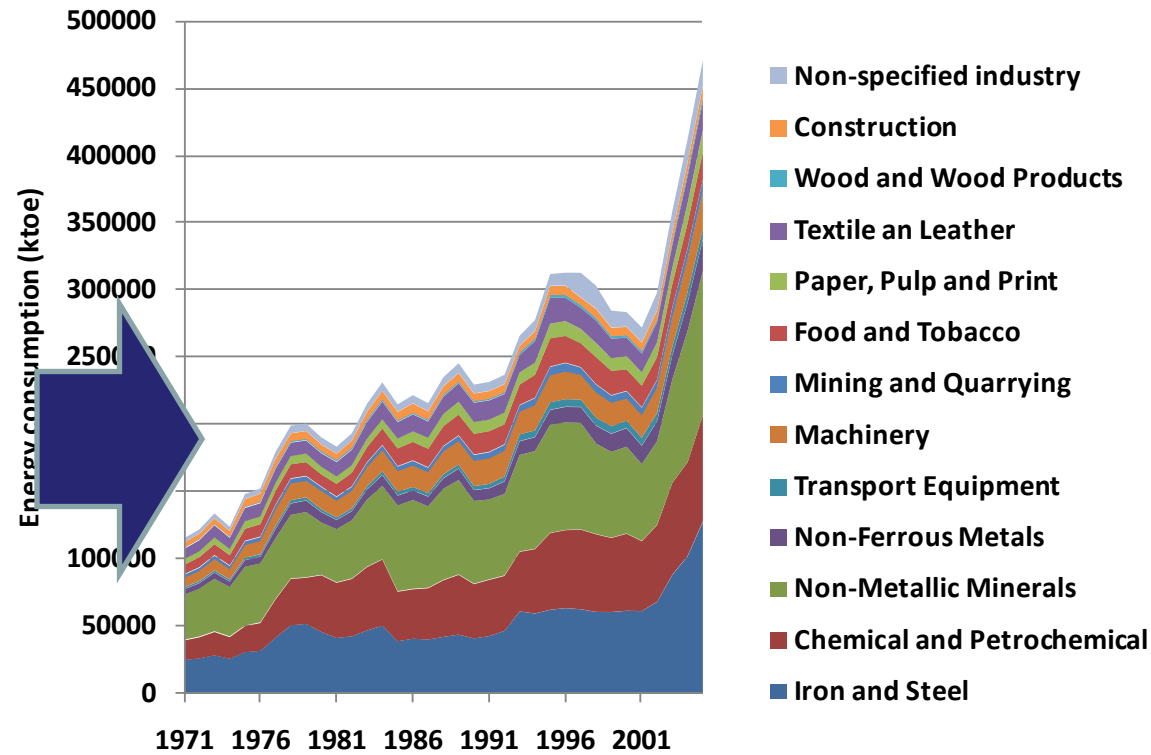
- Non-specified industry
- Construction
- Wood and Wood Products
- Textile and Leather
- Paper, Pulp and Print
- Food and Tobacco
- Mining and Quarrying
- Machinery
- Transport Equipment
- Non-Ferrous Metals
- Non-Metallic Minerals
- Chemical and Petrochemical
- Iron and Steel

China

Industrial energy consumption



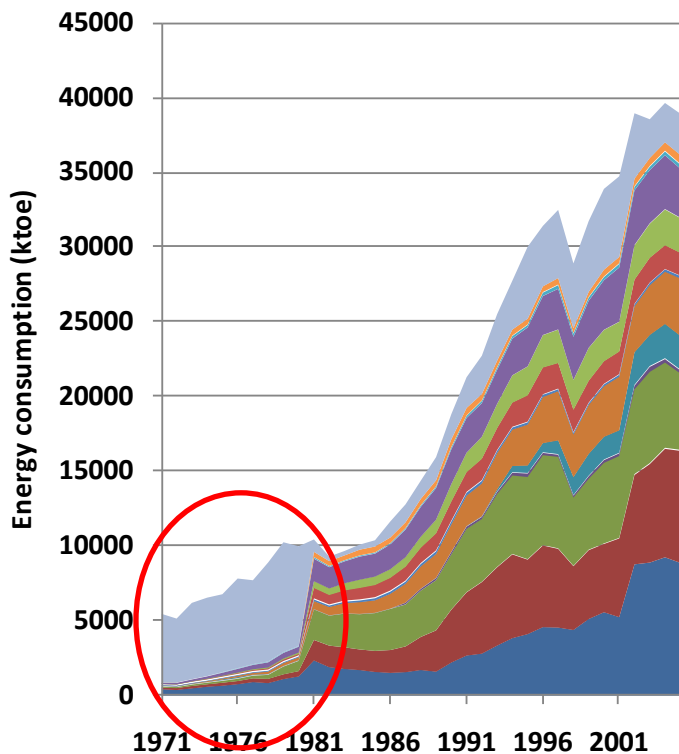
IEA Energy balances



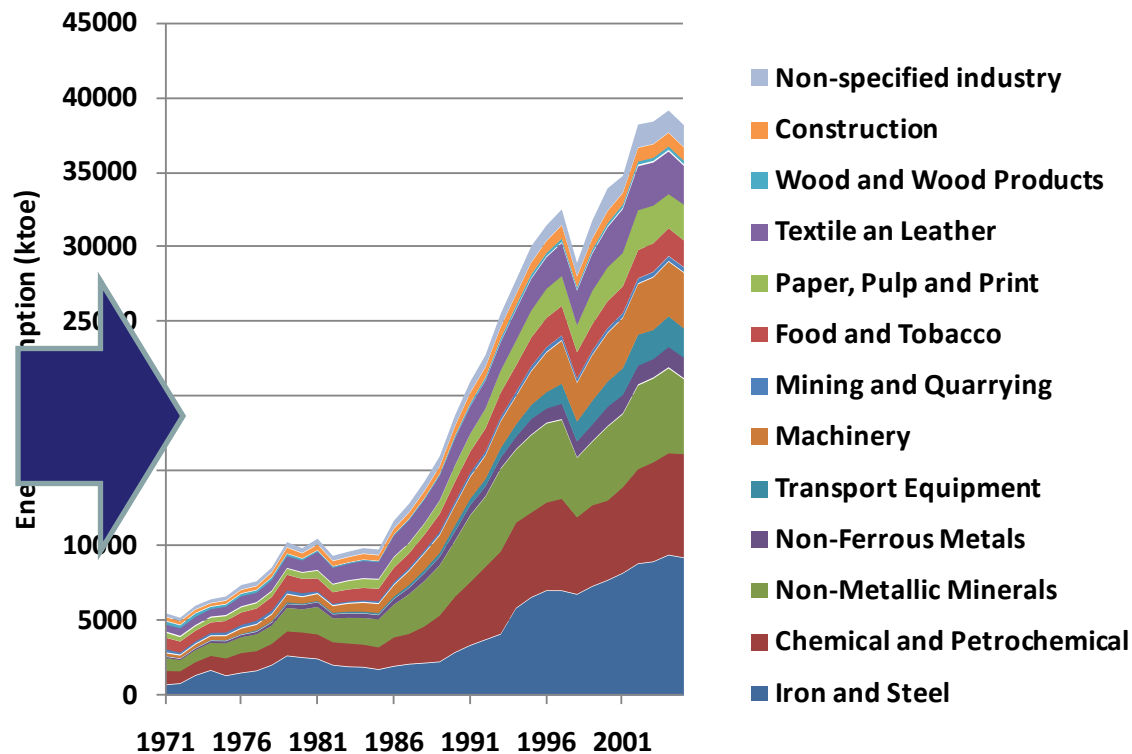
Reconciliation results

Korea

Industrial energy consumption



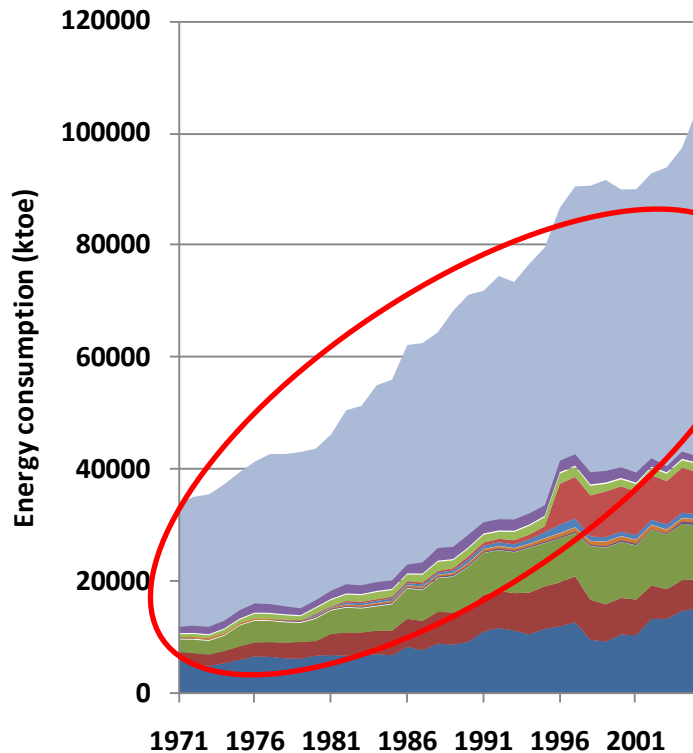
IEA Energy balances



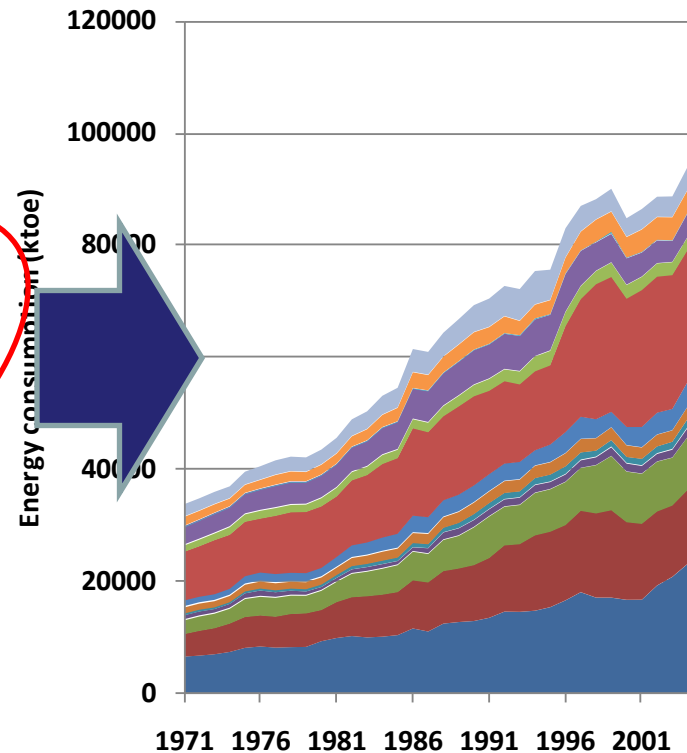
Reconciliation results

India

Industrial energy consumption



IEA Energy balances

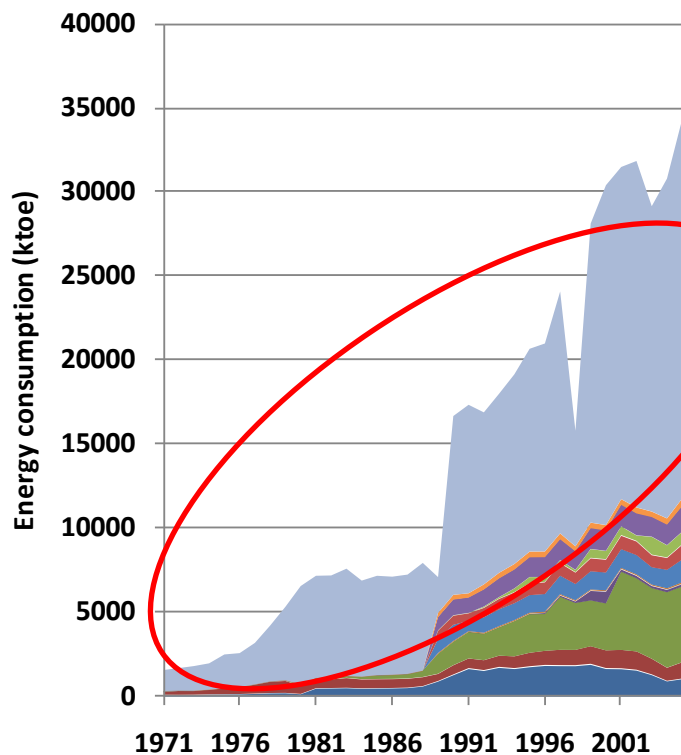


Reconciliation results

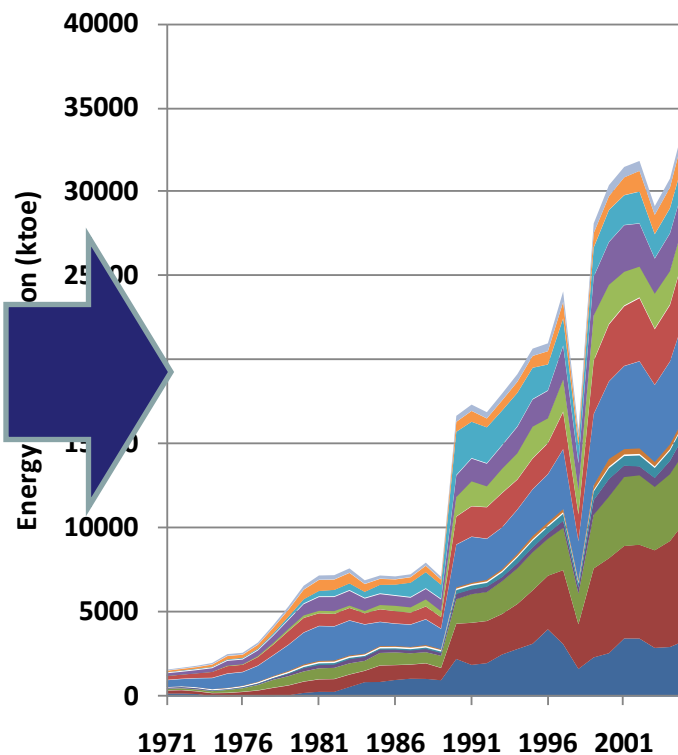
- Non-specified industry
- Construction
- Wood and Wood Products
- Textile and Leather
- Paper, Pulp and Print
- Food and Tobacco
- Mining and Quarrying
- Machinery
- Transport Equipment
- Non-Ferrous Metals
- Non-Metallic Minerals
- Chemical and Petrochemical
- Iron and Steel

Indonesia

Industrial energy consumption



IEA Energy balances

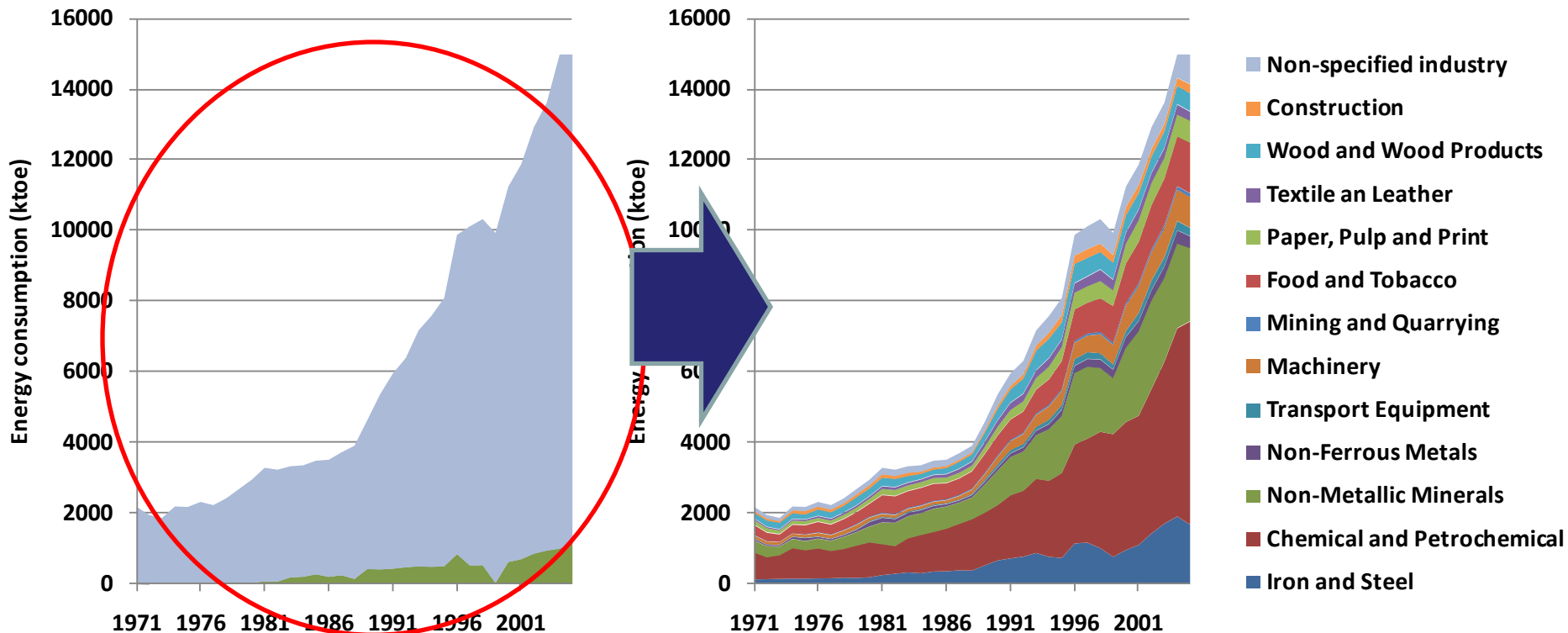


Reconciliation results

- Non-specified industry
- Construction
- Wood and Wood Products
- Textile and Leather
- Paper, Pulp and Print
- Food and Tobacco
- Mining and Quarrying
- Machinery
- Transport Equipment
- Non-Ferrous Metals
- Non-Metallic Minerals
- Chemical and Petrochemical
- Iron and Steel

Malaysia

Industrial energy consumption

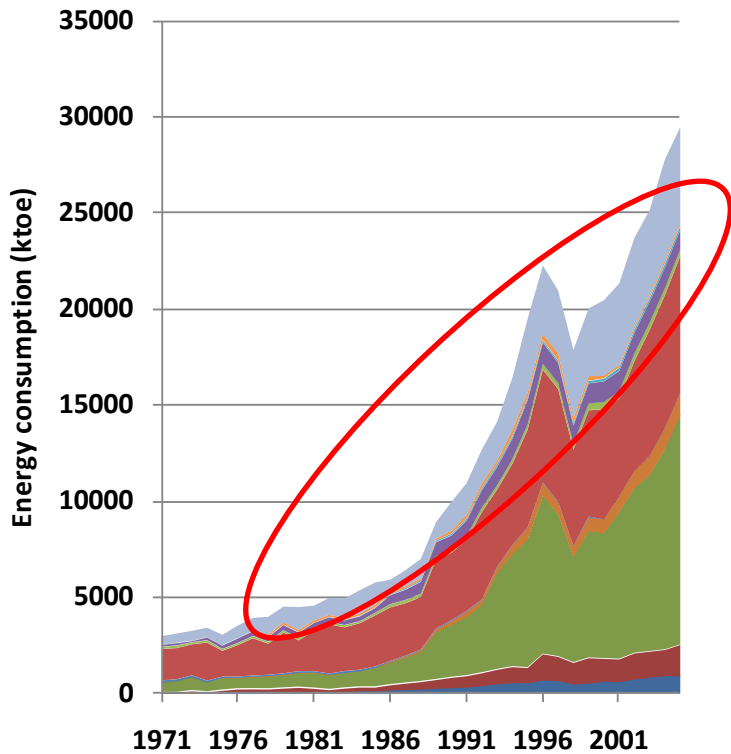


IEA Energy balances

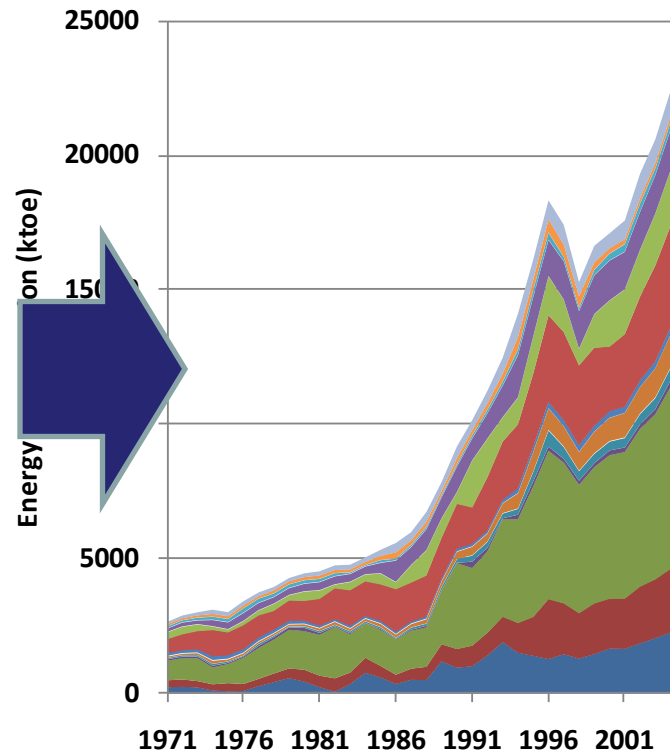
Reconciliation results

Thailand

Industrial energy consumption



IEA Energy balances

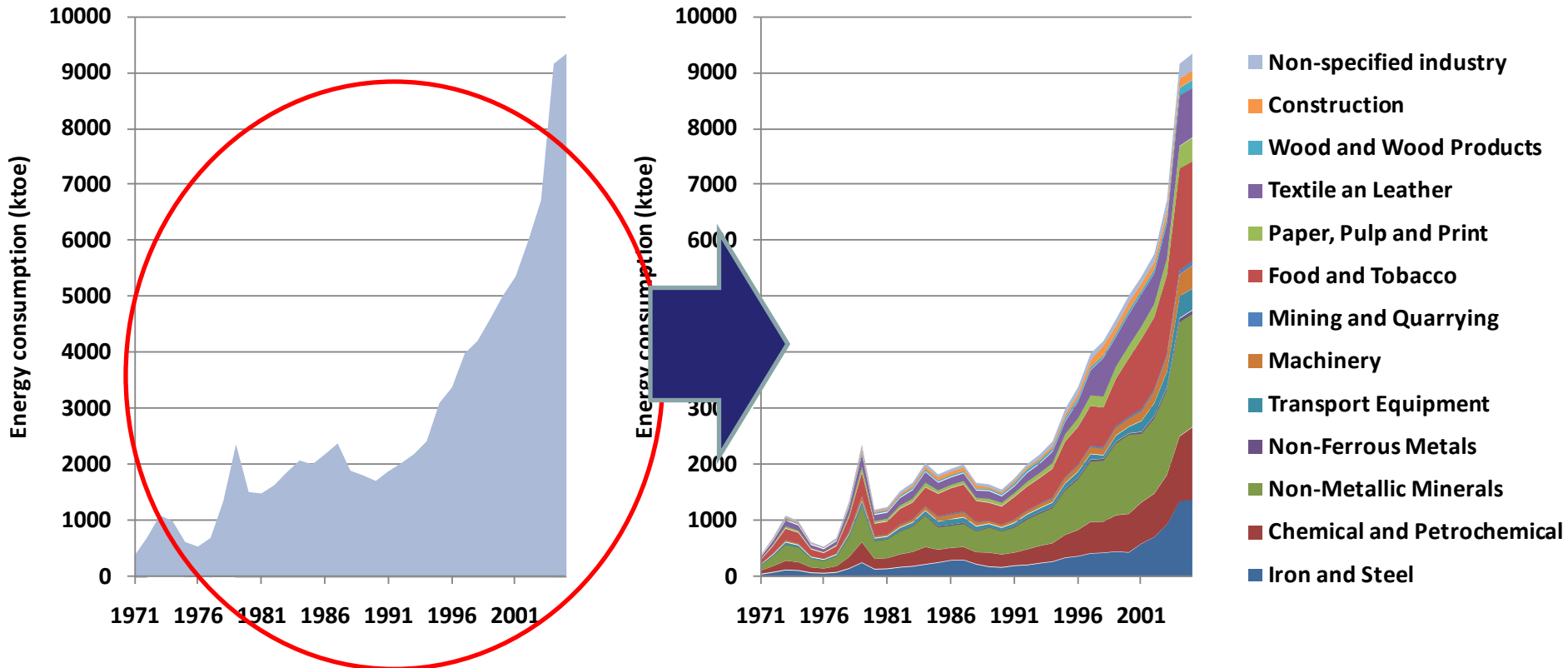


Reconciliation results

- Non-specified industry
- Construction
- Wood and Wood Products
- Textile an Leather
- Paper, Pulp and Print
- Food and Tobacco
- Mining and Quarrying
- Machinery
- Transport Equipment
- Non-Ferrous Metals
- Non-Metallic Minerals
- Chemical and Petrochemical
- Iron and Steel

Viet Nam

Industrial energy consumption

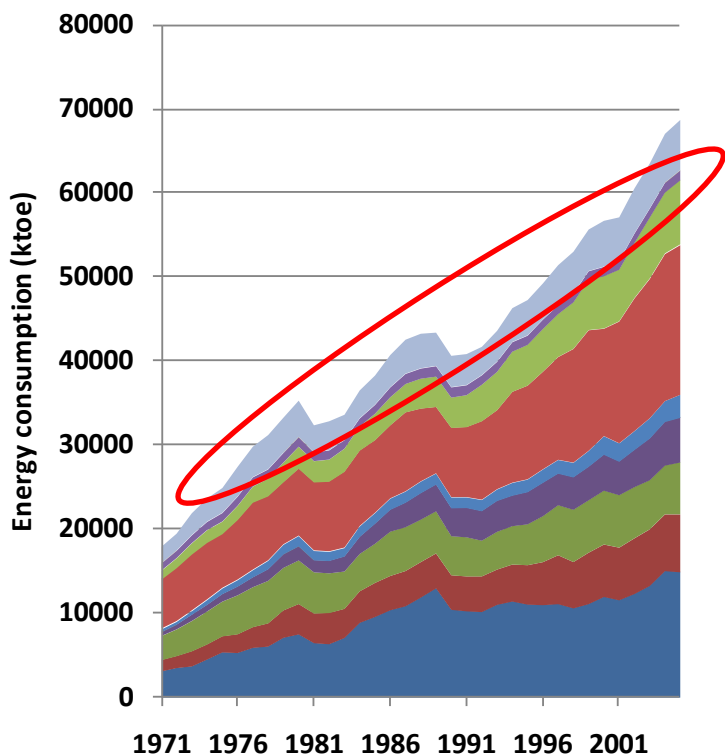


IEA Energy balances

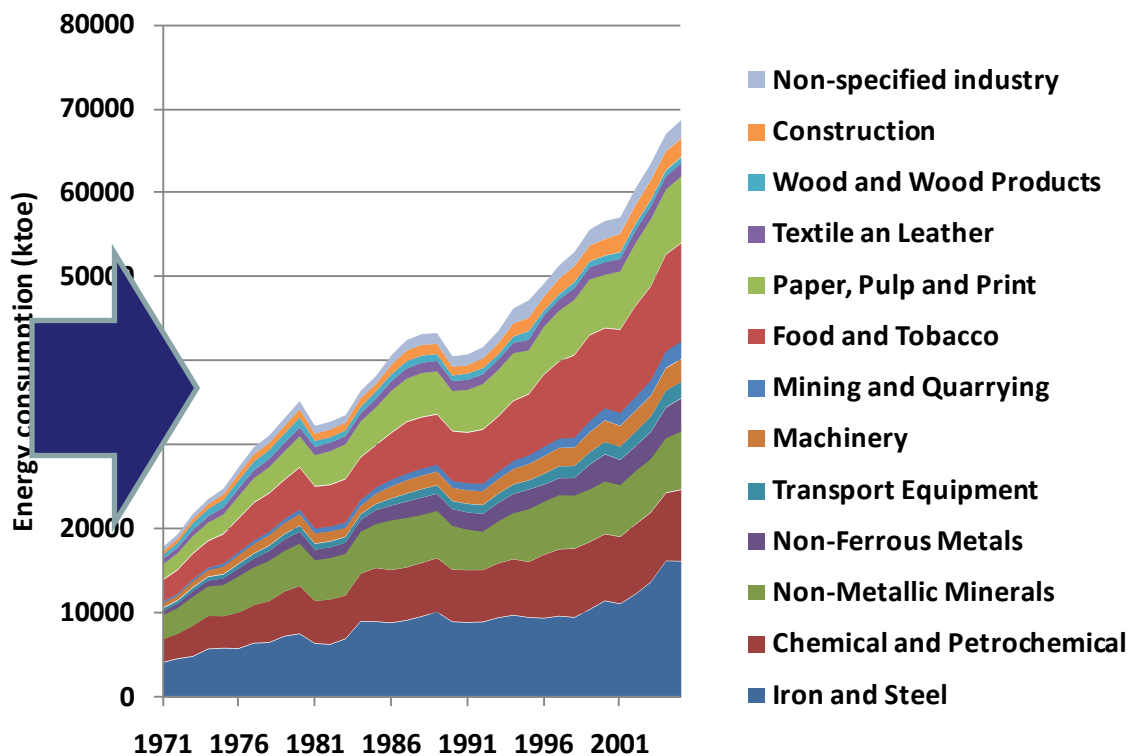
Reconciliation results

Brazil

Industrial energy consumption

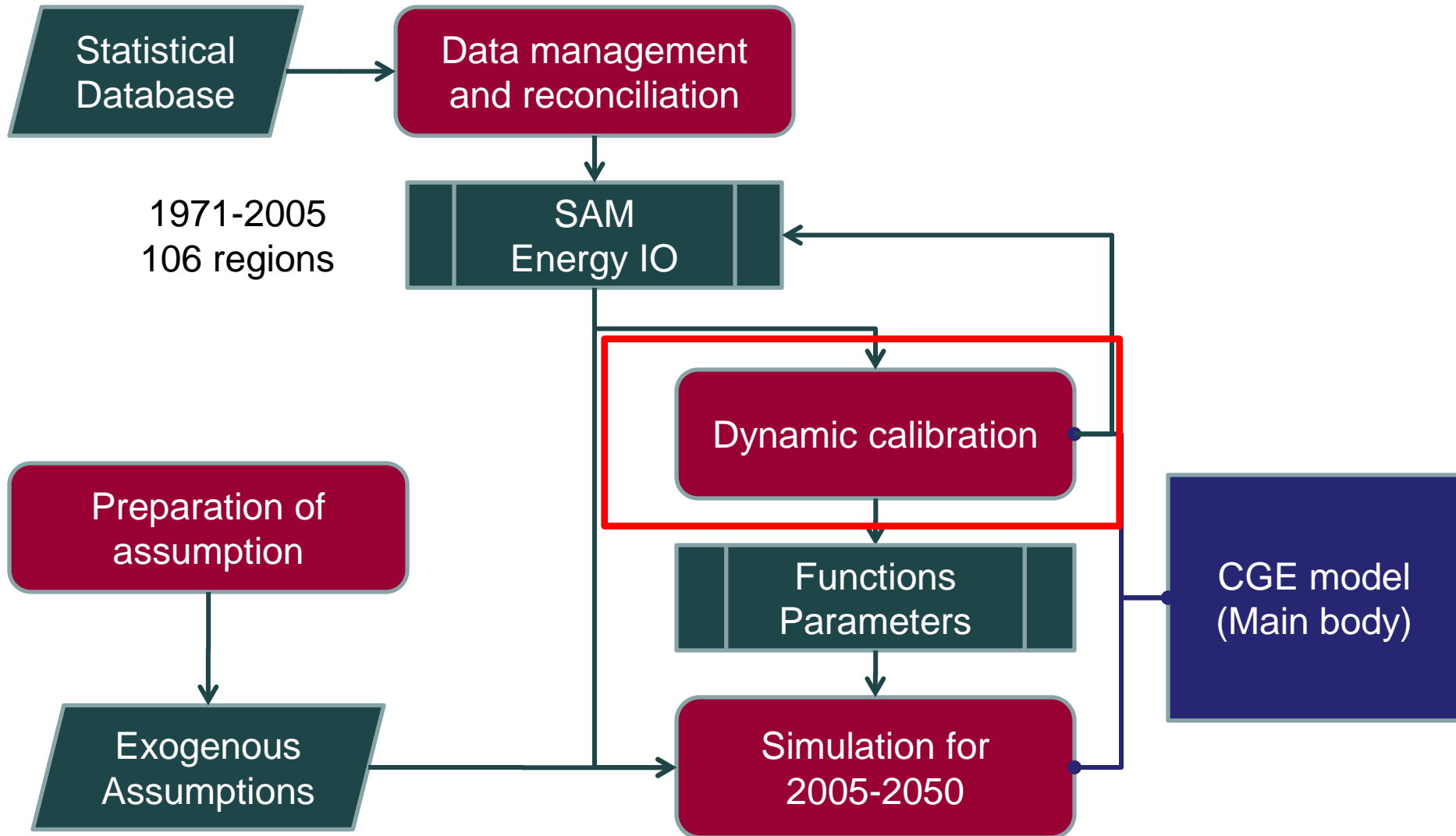


IEA Energy balances



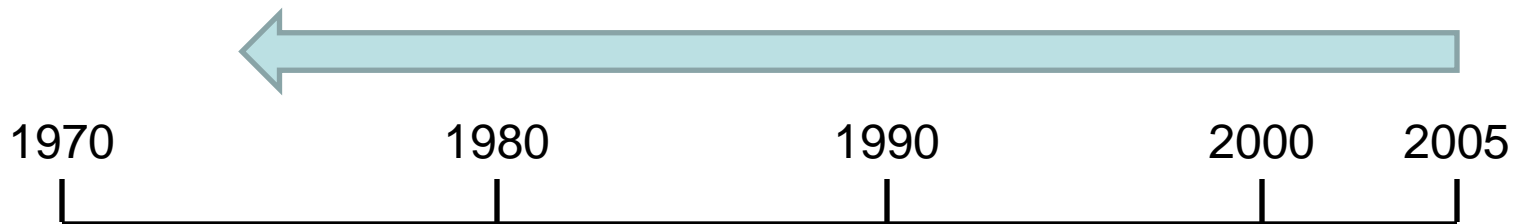
Reconciliation results

Overview of the model development



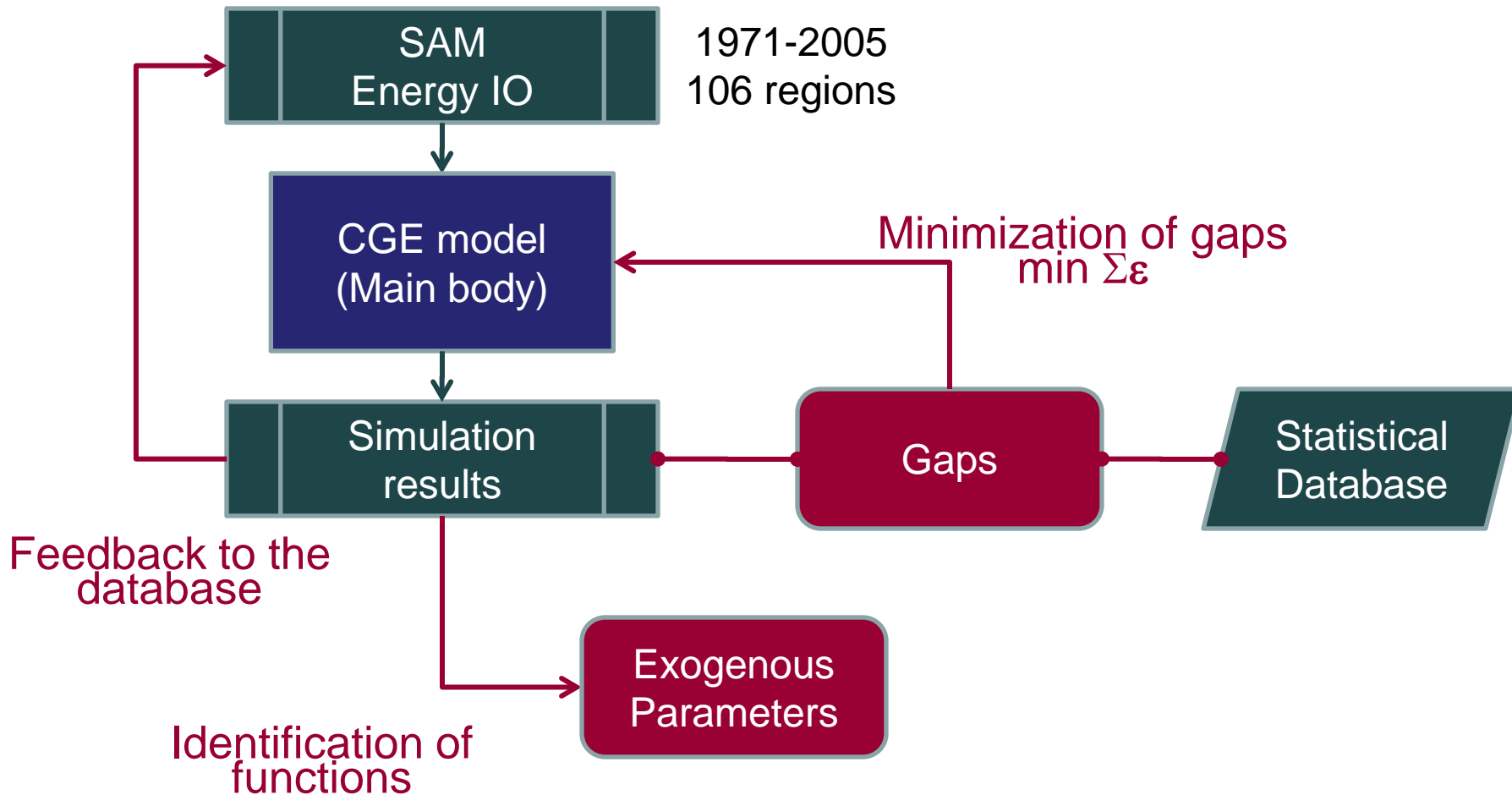
Dynamic calibration (1)

- CGE model - Backward running



- Two main objectives
 - Identify the functions and parameters in CGE
 - Assist historical data reconciliation

Dynamic calibration (2)



Final remarks

- Current issues in CGE modeling activities and the identification of them
 - Original data issues
 - Model structures
- 2 key solutions to those issues
 - Data management and reconciliation system
 - Dynamic calibration system