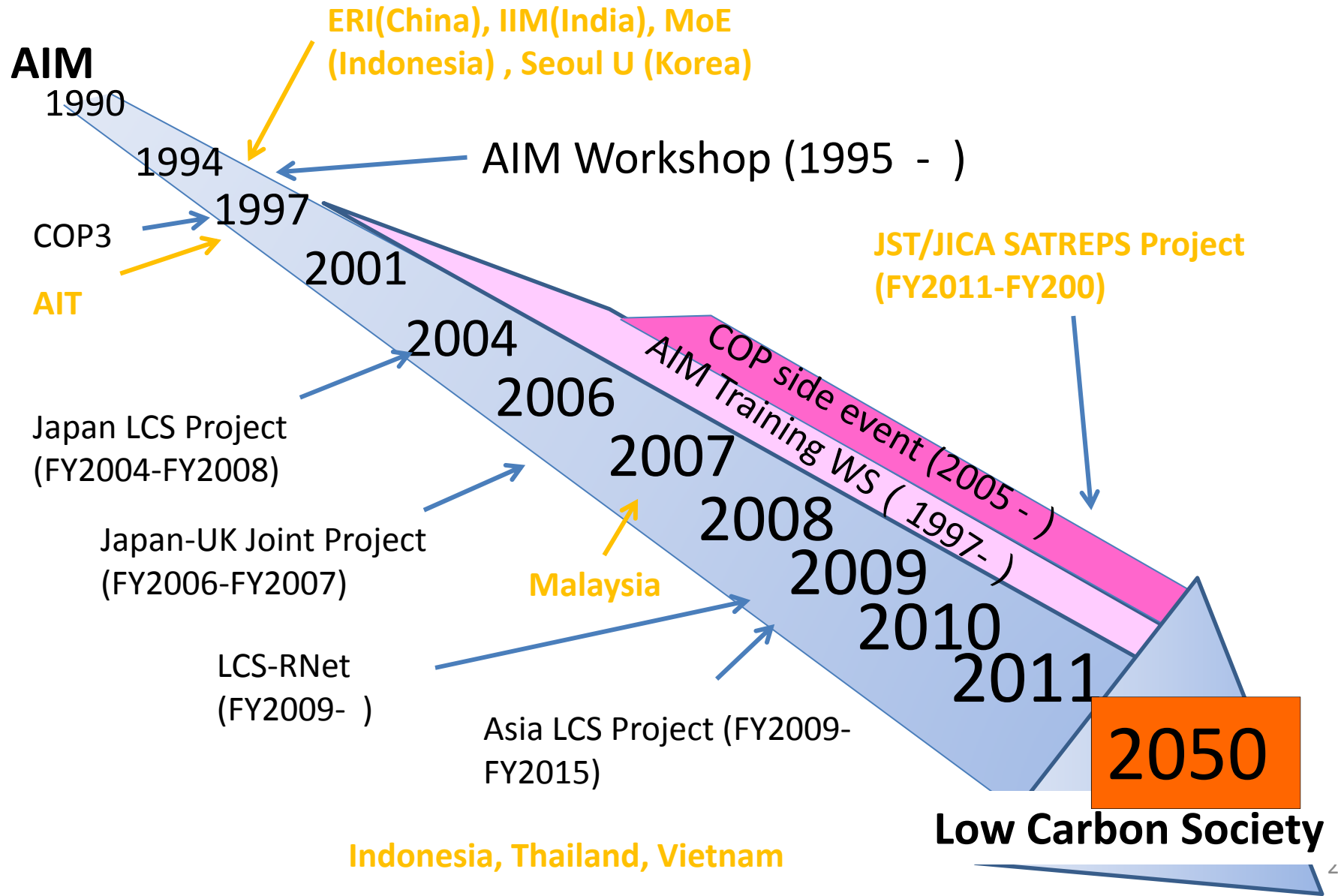


The 16th AIM International Workshop

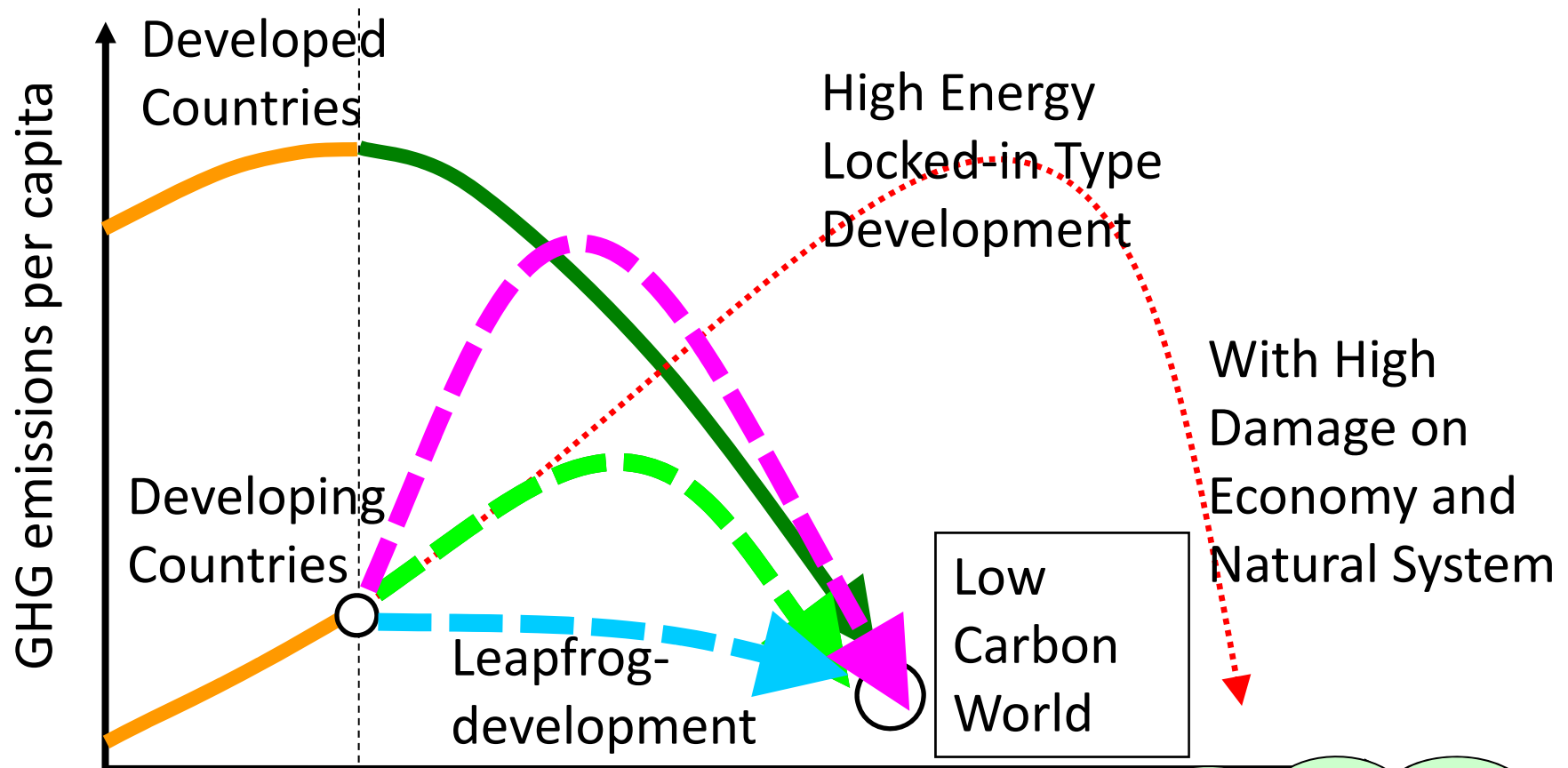
February 19-21, 2011

Climate Change Research Hall at NIES

Asia-Pacific Integrated Model (AIM)



Asian LCS scenarios study



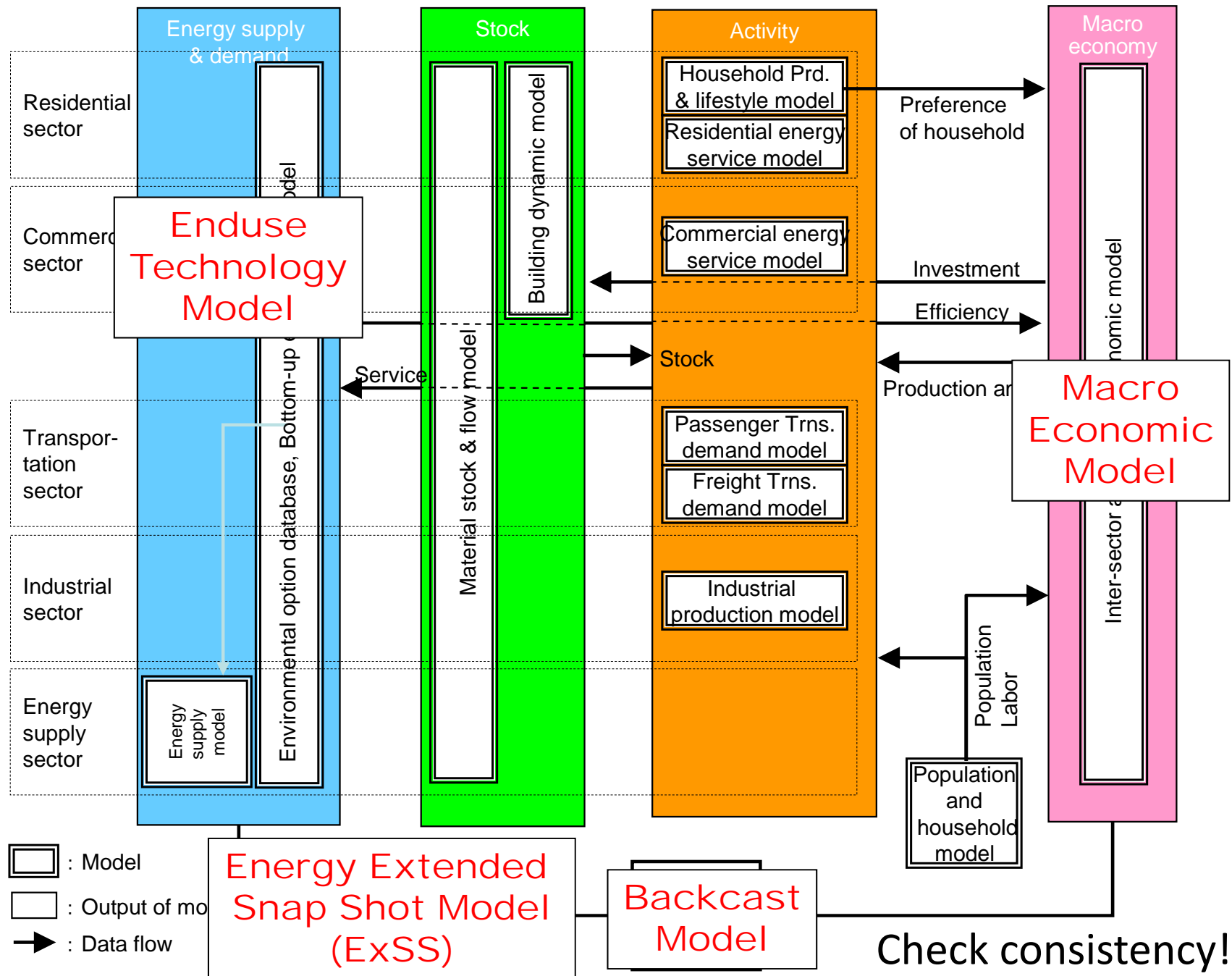
Development of Asia LCS Scenarios

- (1) Depicting narrative scenarios for LCS
- (2) Quantifying future LCS visions
- (3) Developing robust roadmaps



Policy Packages for Asia LCS

- Encouraging the framing for LC policy in each Asian country
- Assistance for international negotiations with scientific basis
- Networking among LCS research in Asia



AIM (Asia-Pacific Integrated Modeling) for Asia LCS scenarios

Analysis of mid-term target setting in Japan by AIM model

1 AIM/Enduse[Global]

- How much should we reduce GHG emissions?

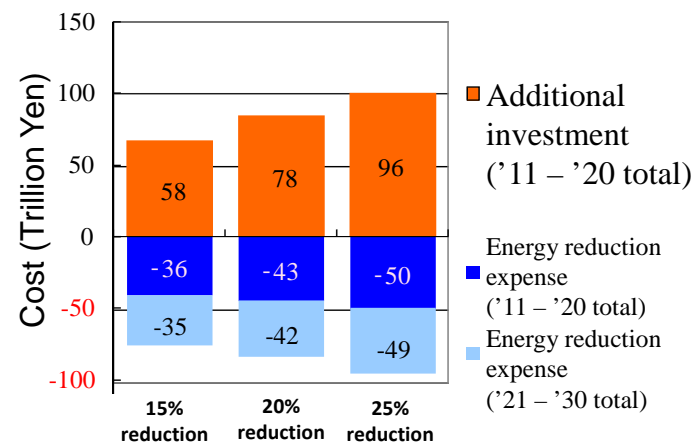
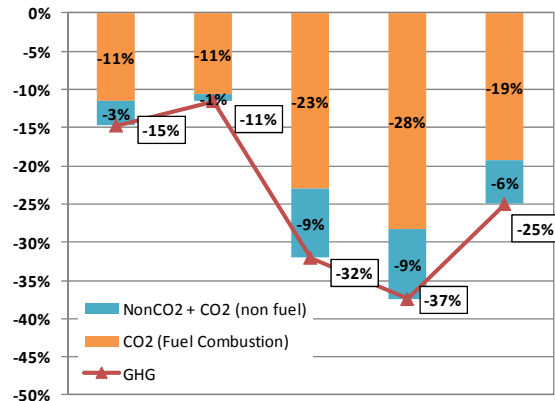
2 AIM/Enduse[Japan]

- Technological potential to reduce GHG emission
- Policies to develop & deployment technologies

3 AIM/CGE[Japan]

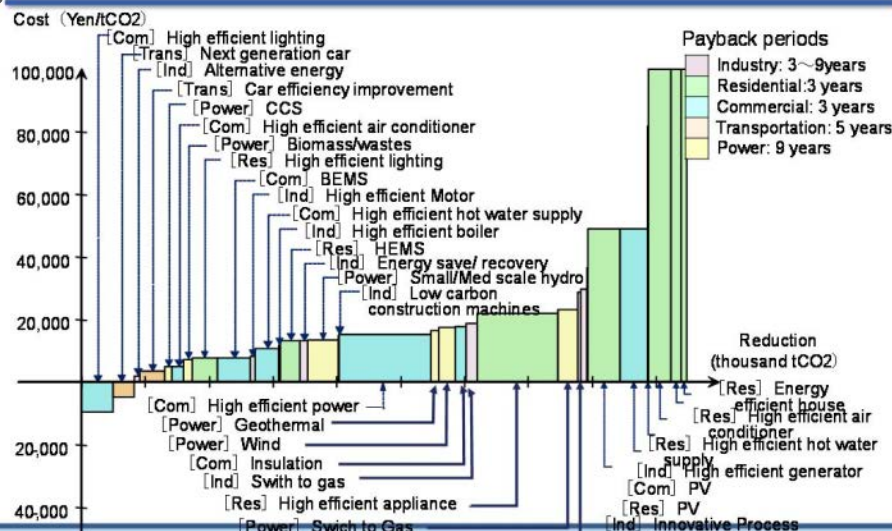
- Economic impacts by the implementation of climate change policies
- Effects of carbon pricing

Equal total abatement cost per GDP
Abatement cost per GDP: 0.74%



← Enduse [Global] ↑ CGE [Japan]
↓ Enduse[Japan]

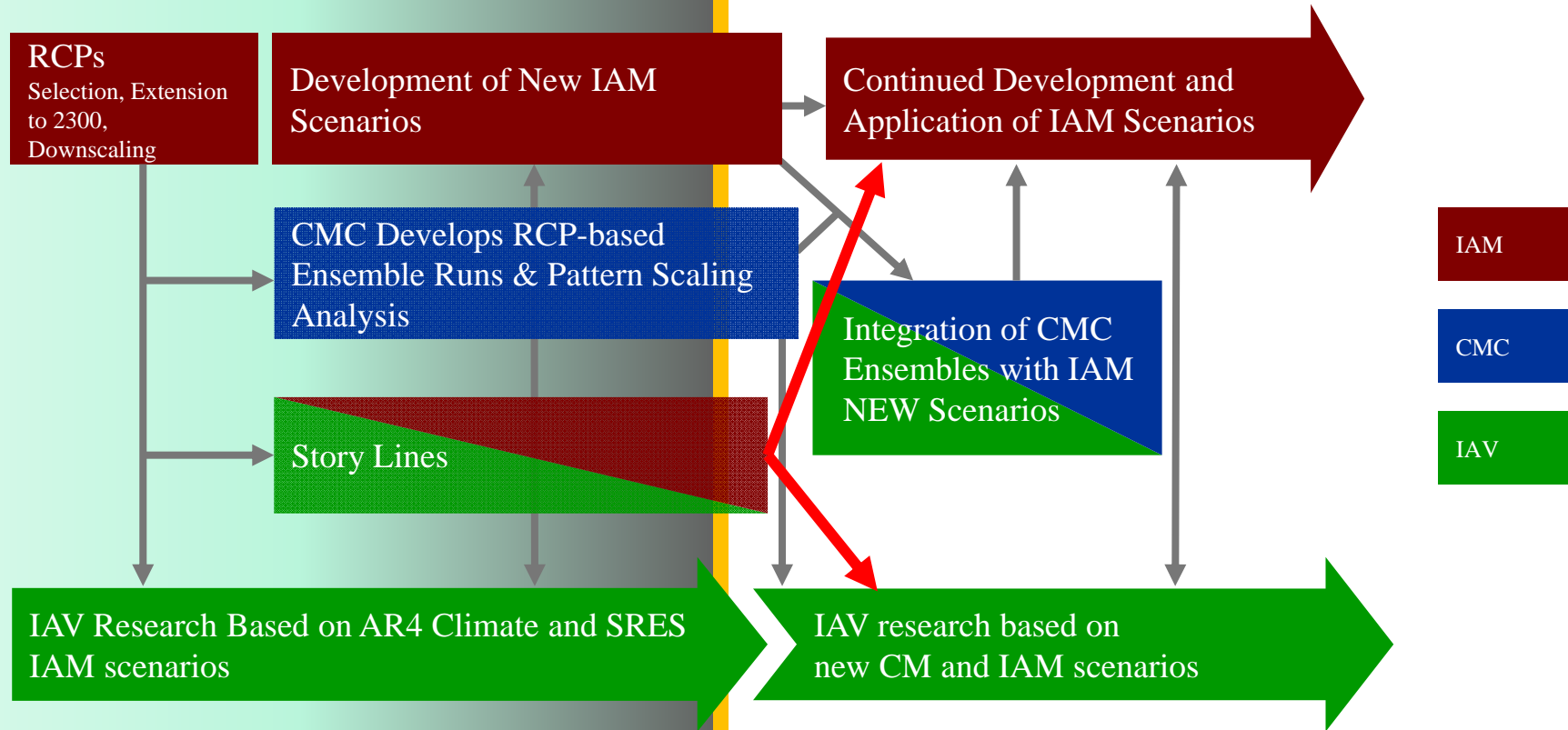
Marginal abatement cost curve for 25% GHG reduction



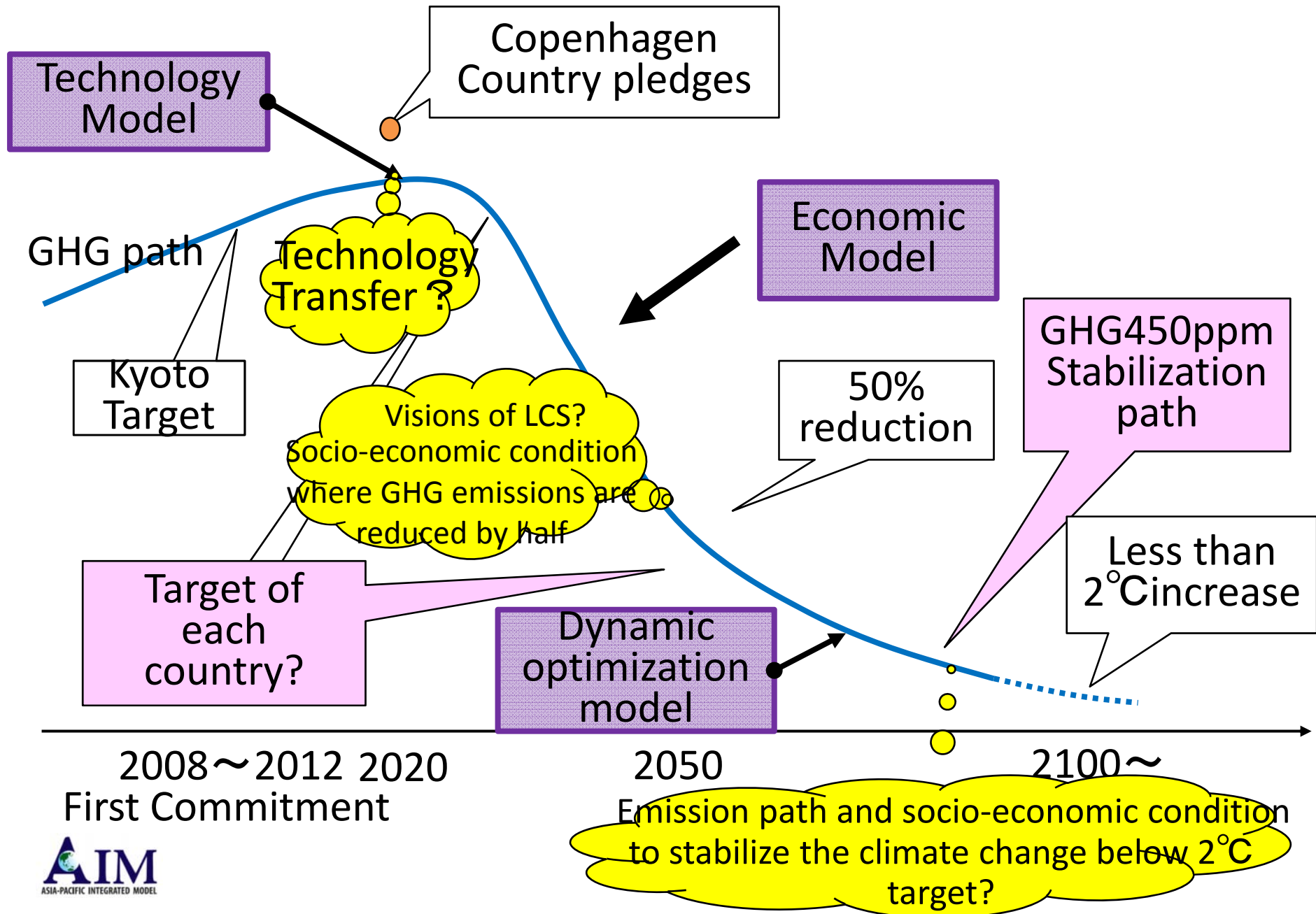
Where are we today?

IPCC New Scenario Development

"Parallel Phase"



Modeling and Policy Analysis to tackle with climate change



Major themes

- New scenario development with integration of adaptation, mitigation, and development
- Roadmap to achieve a low carbon society
- Better understanding of transition to a low carbon society
- More comprehensive treatment of regional aspects of climate change
- Climate change in the context of other dimensions (e.g. poverty, energy security, food security, water security, biodiversity loss, ...)

The 16th AIM International Workshop

	Feb 19 (Sat)	Feb 20 (Sun)	Feb 21 (Mon)
Morning 1	Welcome Address Overview of AIM activities	Asia LCS	Research meeting (I)
Morning 2	Modeling	LCS	
	Lunch	Lunch	Lunch
Afternoon 1	Modeling (Cont'd)	LCS – Next step Panel discussion	Research meeting (II)
Afternoon 2	Impact	Kainuma-san session Presentation & Panel	Research meeting (III)
18:30-20:30	Reception	Dinner	