

Outline of this seminar

Toshihiko Masui (NIES)

Possibility of Low Carbon Society
-DDPP & ERTDF 2-1402 seminar-
Kuramae-Hall, Tokyo Institute of Technology
7th October, 2014

Contents

1. Report of DDPP (Deep Decarbonization Pathway Project).
Dr. Emmanuel Guerin (SDSN) / Mr. Ken Oshiro (MHIR)
2. Report of Environment Research and Technology Development Fund of the Ministry of the Environment, Japan, 2-1402 "Research on Evaluation of Mitigation Strategies to achieve Long-term Reduction Targets of Greenhouse Gases in Japan and the World" as a science & technology dialogue with citizens.
Dr. Shuichi Ashia (NIES)
3. Toward inputs for GHG emission reduction target in Japan.
Mr. Naoyuki Yamagishi (WWF Japan) / Dr. Takashi Kuramochi (IGES)
4. Panel Discussion
 - Introduction of "2050 Calculator" developed by IGES and NIES
 - Reply to questions to each presentation: If you have questions, please write your questions on the sheet. During the break, the questions will be collected, and each panelist will reply to the questions.
 - We will discuss necessary points in Japan toward COP21 such as 2°C target.

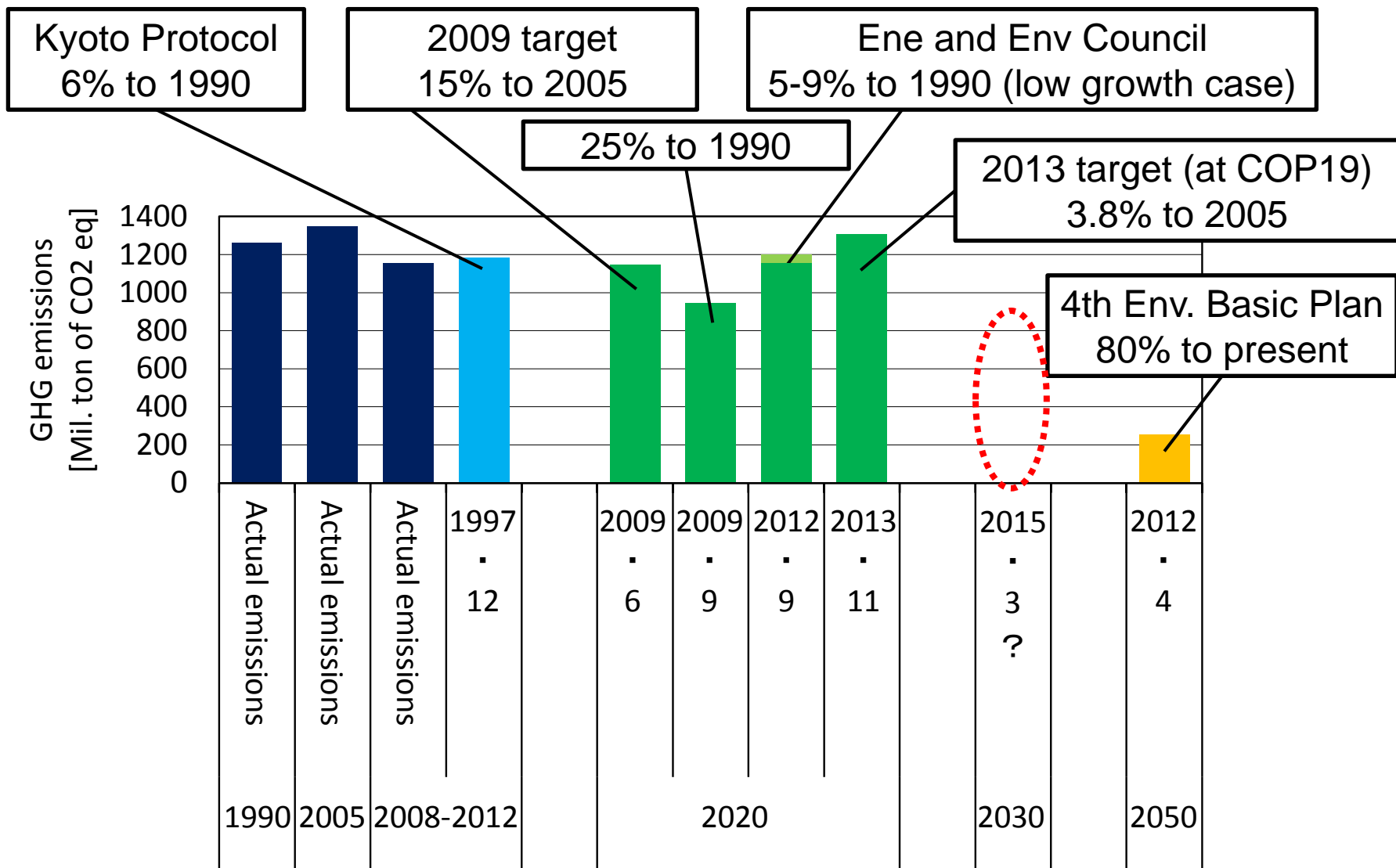
Previous discussion (1)

Time	Japan	World
1992.5		Adoption of UNFCCC.
1997.12	COP3 in Kyoto. Adoption of Kyoto Protocol. ■ During 1st commitment period (2008-12), 6% reduction compared with those in base year.	
2007.5.24	Invitation to "Cool Earth 50" by then Prime Minister Abe. ● Halving global GHG by 2050 compared with present level.	
2007.6.8		G8 Summit at Heiligendamm: we will consider seriously the decisions ... which include at least a halving of global emissions by 2050.
2008.11-2009.4	Discussion of GHG mitigation target at Mid-term Target Committee, Cabinet office.	
2009.6.11	Then Prime Minister Aso announced GHG emission reduction target in 2020. ■ 15% reduction of domestic emission compared to 2005 level.	
2009.9	Address by then Prime Minister Hatoyama at the 64th session of the general assembly of the UN. ■ GHG emissions in 2020 will be reduced by 25% compared to 1990 level under fair and effective international framework.	
2009.10-12	Discussion at Task force meeting on climate change.	
2009.12-2010.3	Discussion at Investigative commission on mid-/long-term roadmap to combat climate change; How to realize 25% reduction by reconsidering assumptions and countermeasures.	
2010.1	Based on "Copenhagen Accord", each country submitted mitigation target/action plan. ■ 25% reduction, which is premised on the establishment of a fair and effective international framework in which all major economies participate and on agreement by those economies on ambitious targets.	

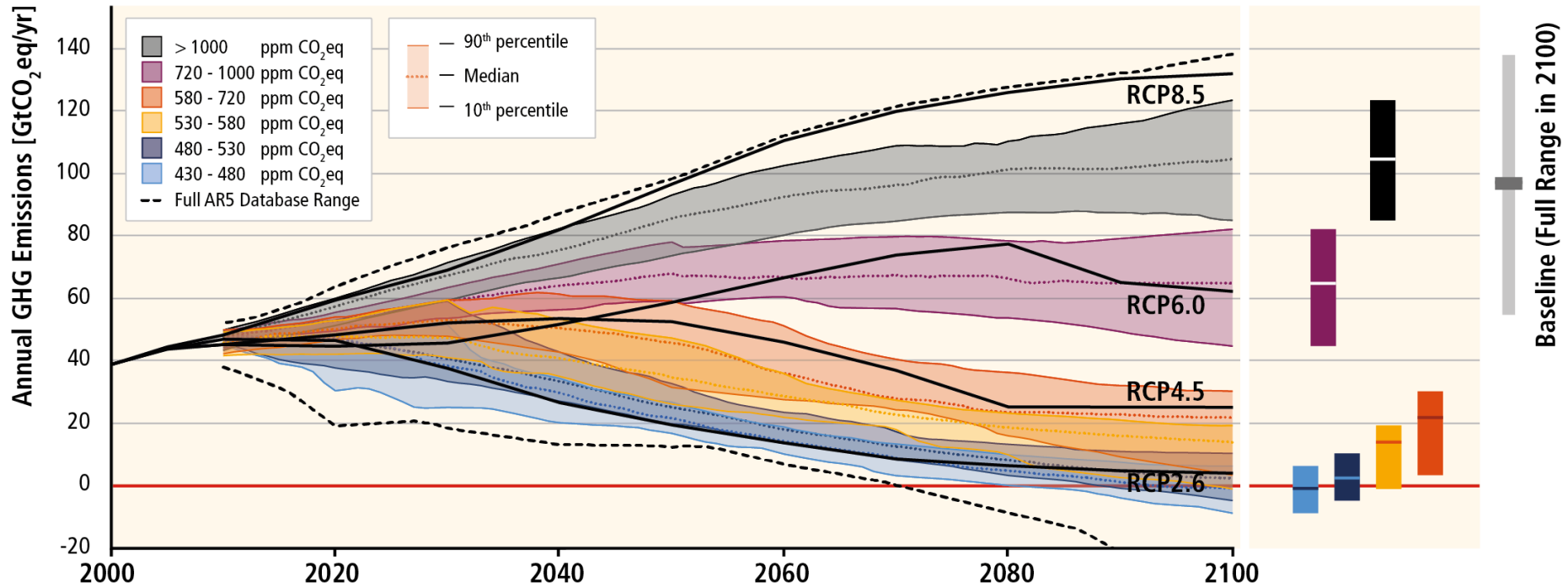
Previous discussion (2)

Time	Japan	World
2010.4-2011.3	Results from Sub-committee on Mid-/Long-term Roadmap, Central Environment Council showed the society in Japan achieving 25% GHG reduction in 2020 compared to 1990.	
2010.11-12		Cancun Agreements at COP16: "Establish clear goals and a timely schedule for reducing GHG emissions over time to keep the global average temperature rise below two degrees."
2011.3.11	East Japan great earthquake and TEPCO Fukushima Dai-ichi nuclear power plant accident.	
2011.7-	Discussion at Sub-committee on countermeasures/policies post 2013, Central Environment Council.	
2012.4.27	The 4th Environmental Basic Plan. ■ GHG emissions in 2050 will be reduced by 80%.	
2012.9	Options for Energy and the Environment by The Energy and Environment Council. ■ In the low economic growth case, GHG emissions in 2020 will be reduced by 5-9% compared to 1990 level. In the high economic growth case, 2-5% reduction. ■ GHG emissions in 2030 will be reduced by about 20% compared to 1990 level. ■ GHG emissions in 2050 will be reduced by 80%.	
2013.11	Then Environment Minister Ishihara, announced the new emission target in Japan at COP19. ■ 3.8 % reduction in 2020 compared to the 2005 level.	
2015.3	Each country will submit the post-2020 target.	
2015.12	COP21 in Paris. The post-2020 target will be decided?	

History of Japan's GHG mitigation target



GHG Emission Pathways 2000 – 2100: All AR5 Scenarios

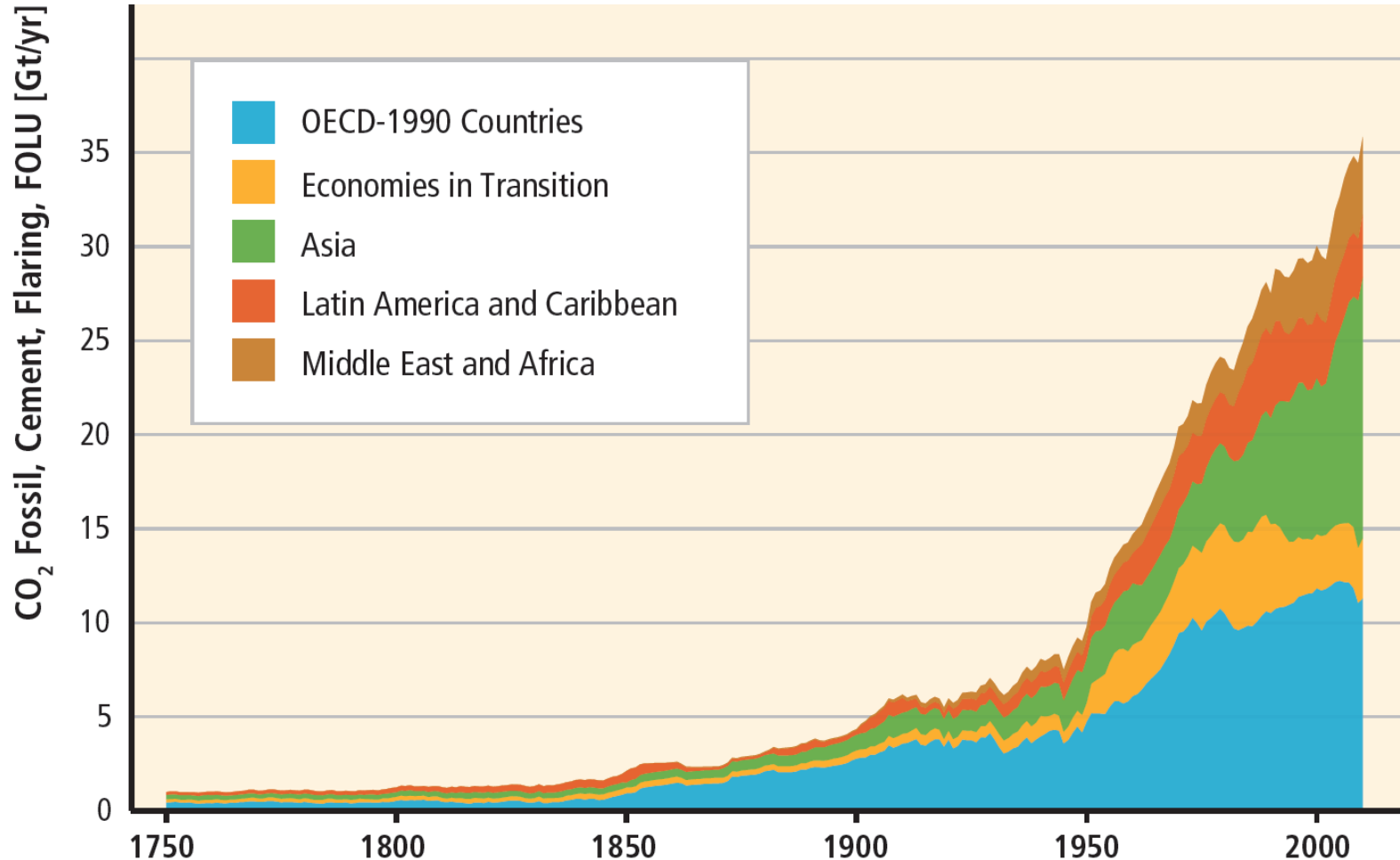


Source: IPCC AR5 WG3 Fig SPM.4

Scenario likely to staying below 2 degree C level over the 21st century compared to the pre-industrial level is 430-480ppmCO₂eq.

In order to achieve this target, GHG emissions in 2050 and 2100 will be reduced by 41-72% and 71-118%, respectively, compared to the 2010 level.

Trend of CO2 emissions by regions



Source: IPCC AR5 WG3 Figure TS.2 a)

Based on the previous discussions in Japan, results from IPCC AR5, and outputs from this seminar, we promote discussion on post-2020 GHG emission reduction target in Japan.

Possibility of Low Carbon Society

Report Seminar of Deeply Decarbonization Pathways Project and
Debrief Session of the Environment Research and Technology
Development Fund 2-1402

《simultaneous interpretation receiver》

Japanese Channel1

English Channel2

When you are back, please put the receiver at the seat.