

# **The 9th AIM International Workshop**

**March 12-14, 2004**  
**NIES, Tsukuba, Japan**

**Activities in the Fiscal Year 2003 in Korea**

**Tae Yong Jung**  
**IGES, Japan**

**Dong Kun Lee**  
**Seoul National University, Korea**

# Table of Contents



## ○ AIM/Korea Local Model

- **Metropolitan Area of Seoul;  
Seoul/Kyunggi-do/Incheon city**
- **Input Data Projection**
- **Sectoral Projection**
- **Scenario: Transportation Sector**
- **Air pollution + GHG emission**

## ○ Further Studies (2004)

# Policy Issue

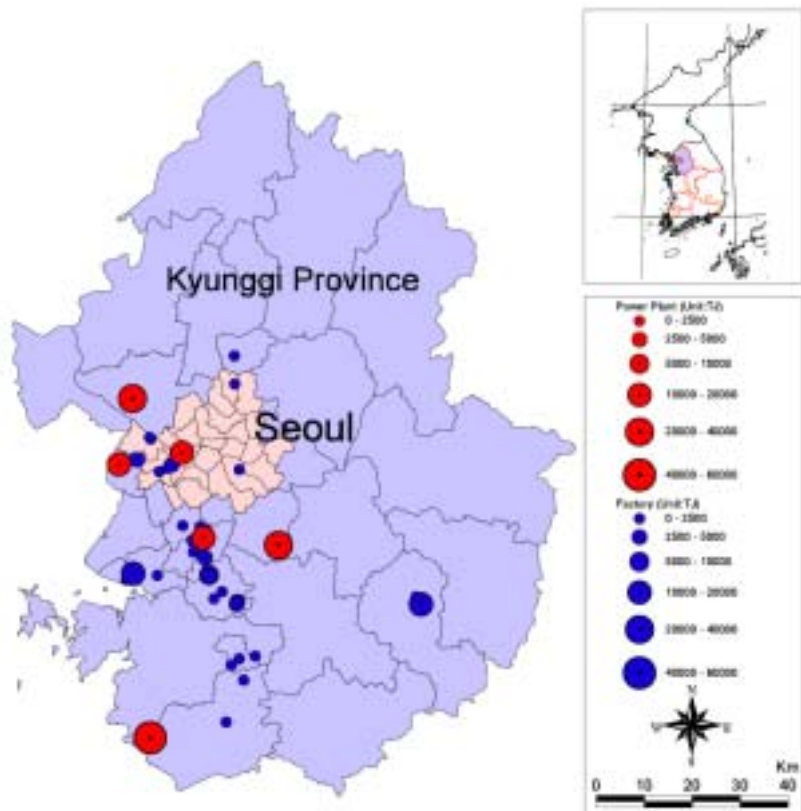


## ○AIM/Korea Local Model Application

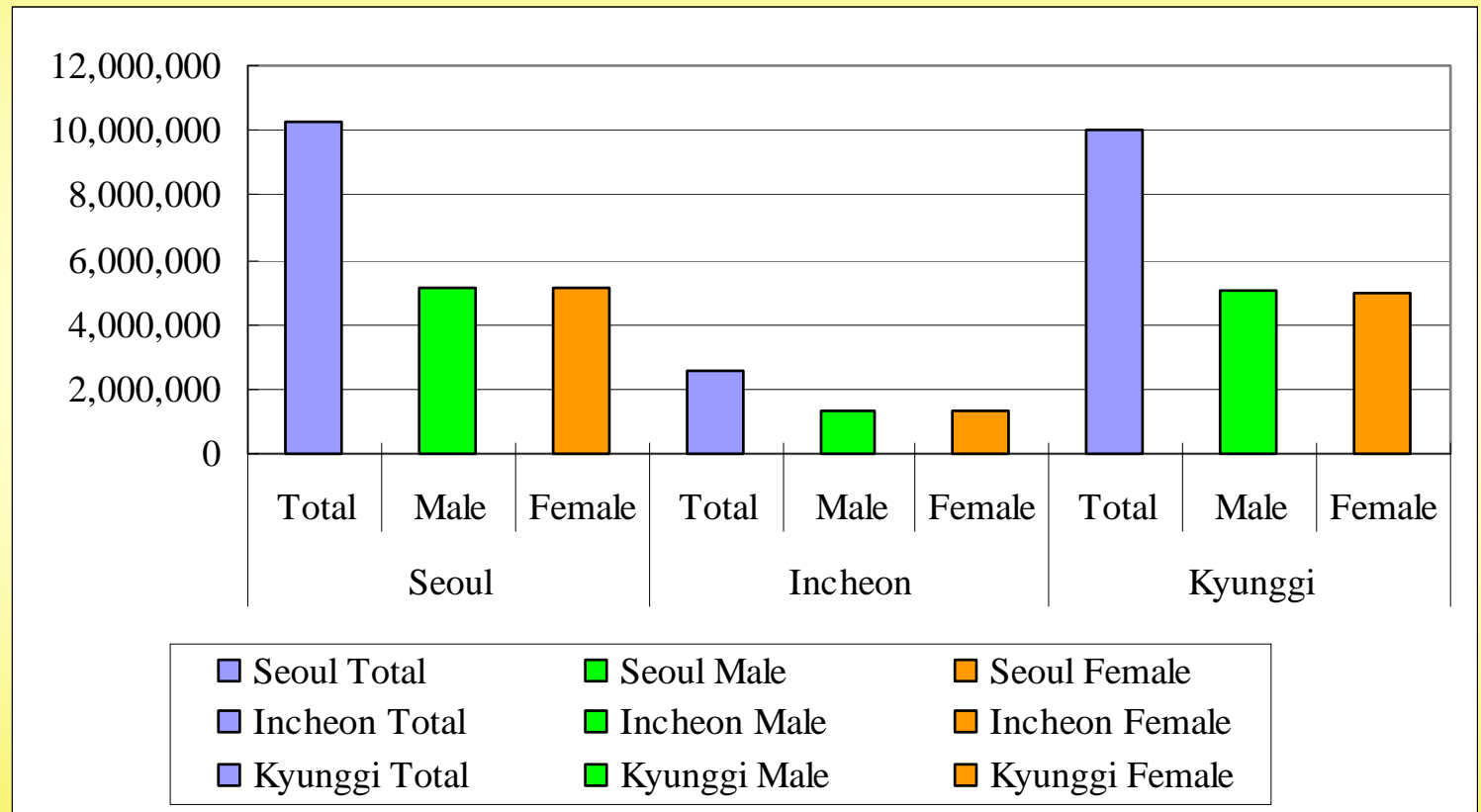
- **Special Act on Air Quality Improvement in the Metropolitan Area of Seoul (PM-NO<sub>x</sub> Act in Japan)**
- **Introduction of Diesel Passenger Cars**
- **Movement of Capital to the Central Region of Korea**

# Metropolitan Area of Seoul

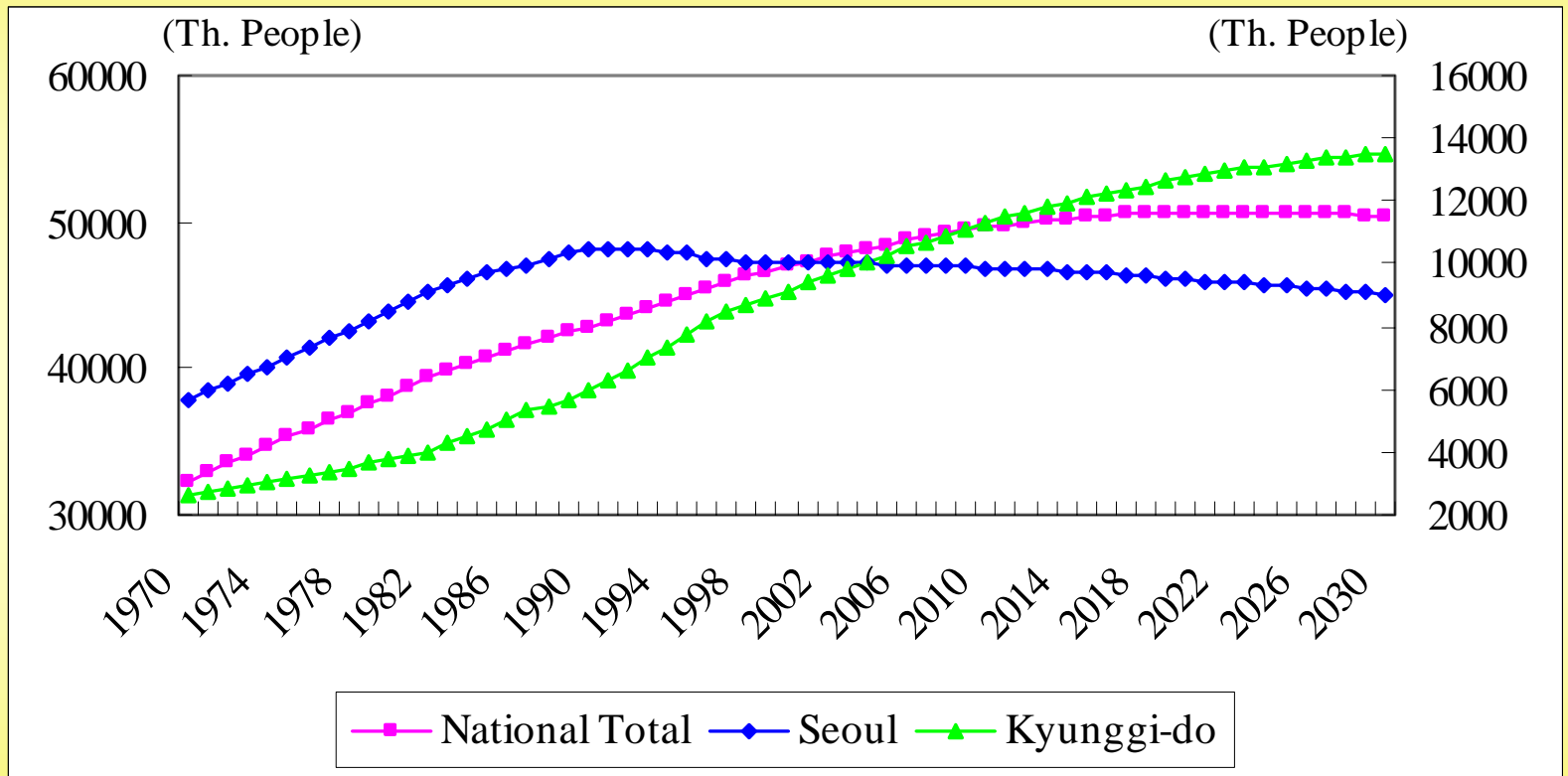
Large Point Source in Seoul and Kyunggi Province  
(Energy Consumption)



# Input Projection: Population (2002)

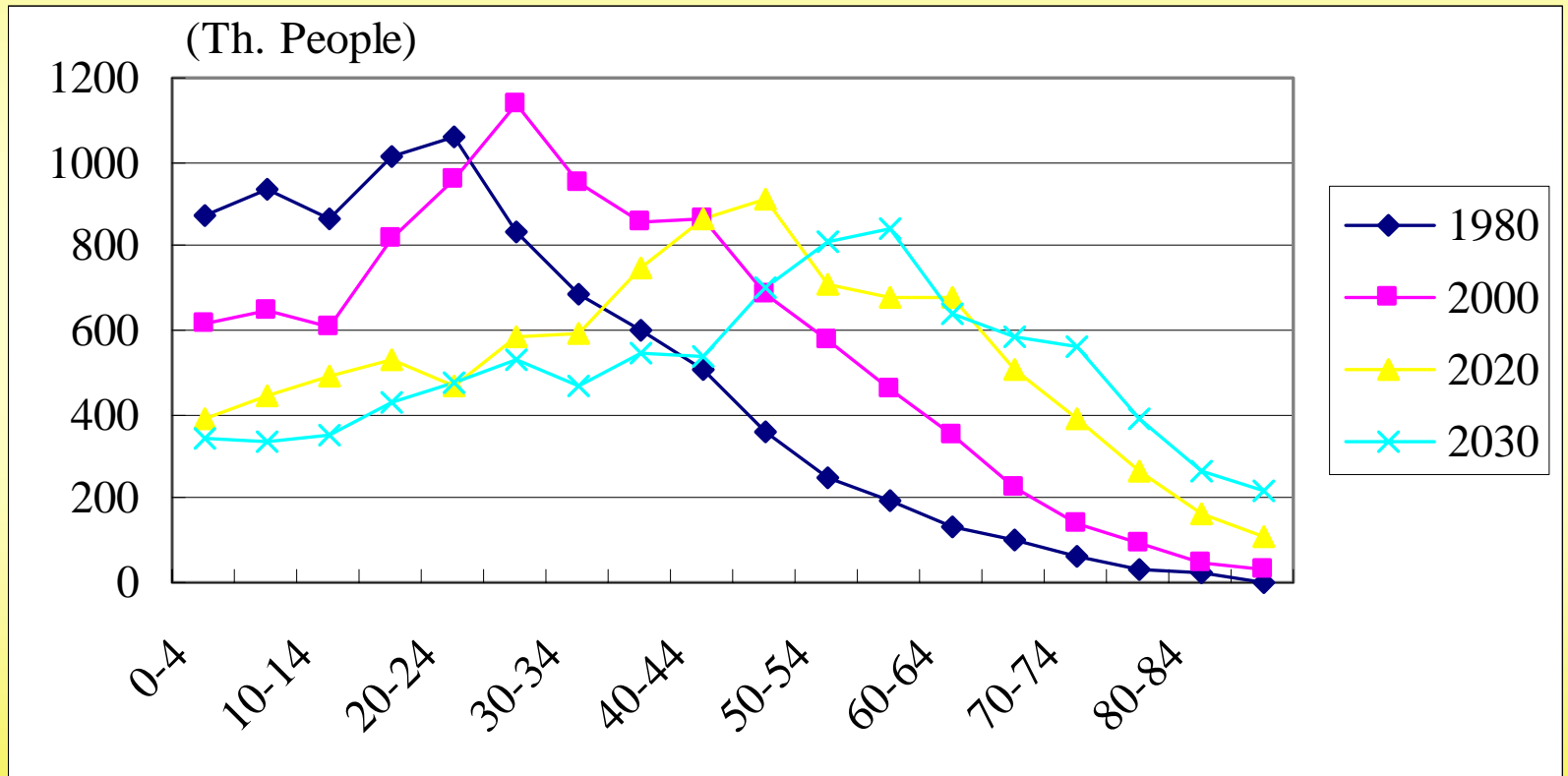


# Population Projection



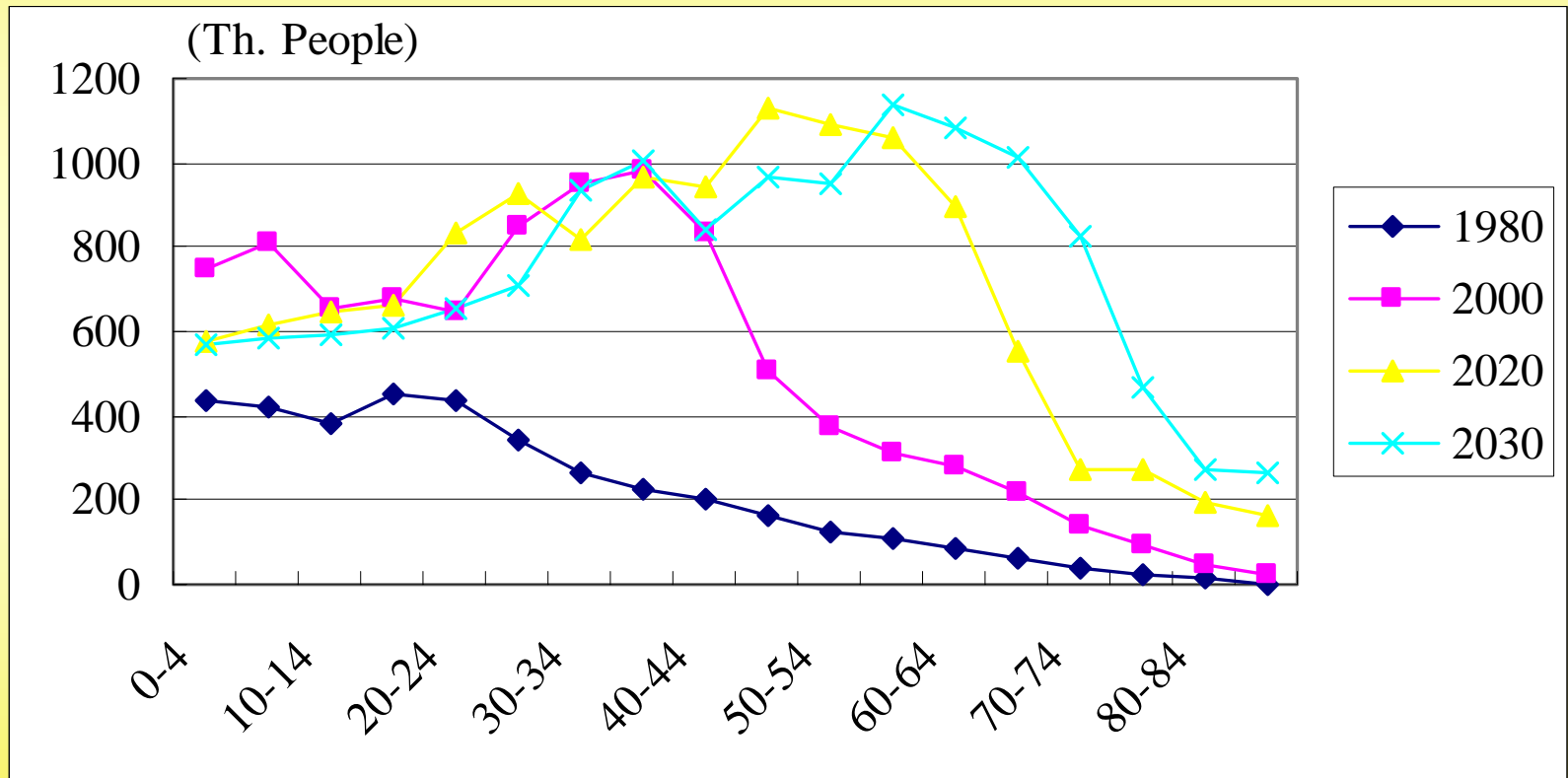
*Source: Statistic Bureau of Korea, 2003*

# Population Change by Age (Seoul)



Source: Statistic Bureau of Korea, 2003

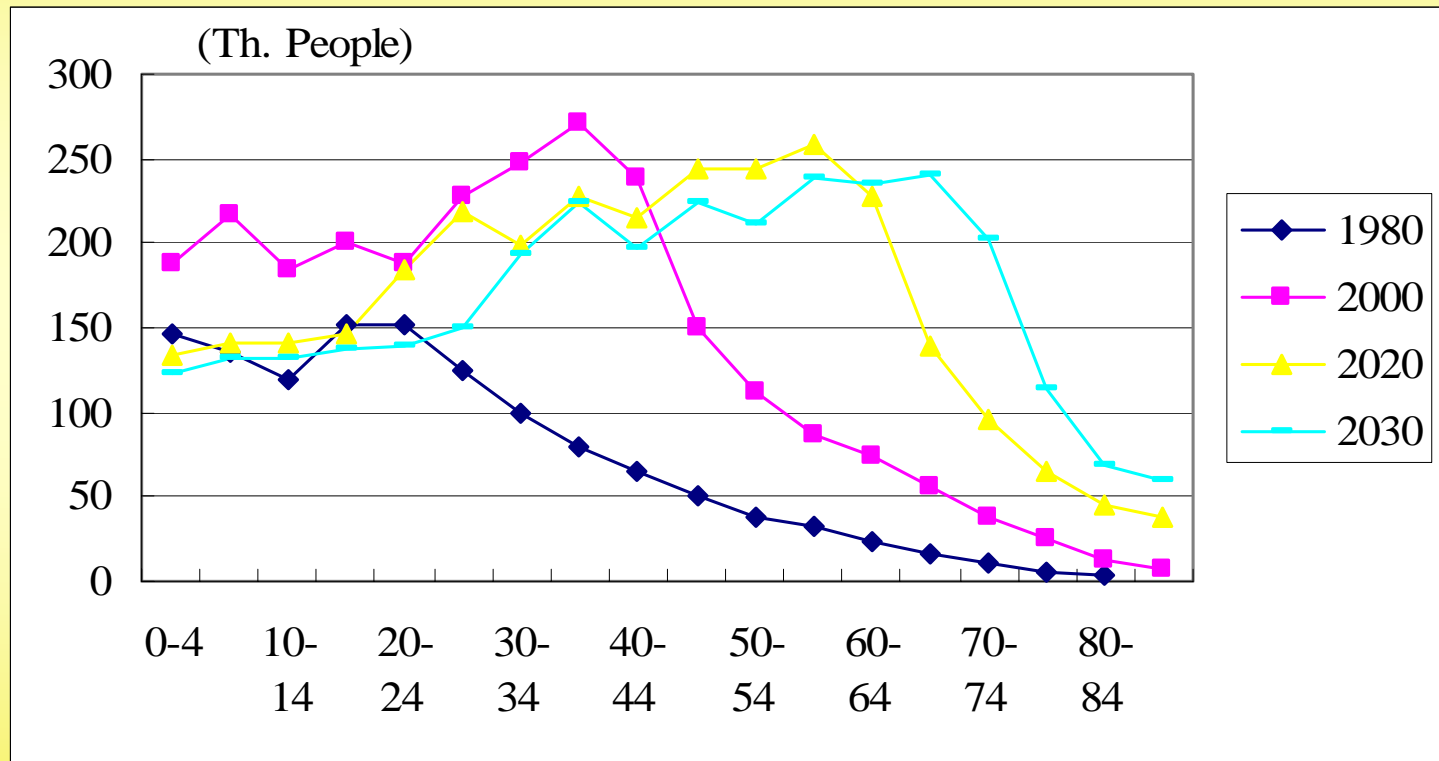
# Population Change by Age (Kyunggi-do)



Source: Statistic Bureau of Korea, 2003



# Population Change by Age (Incheon City)

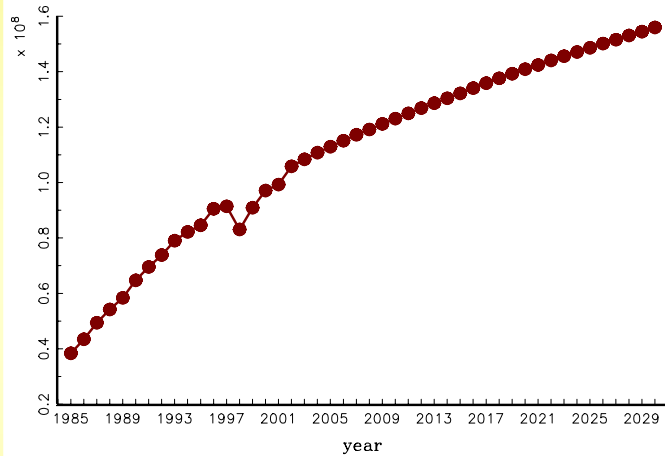


*Source: Statistic Bureau of Korea, 2003*

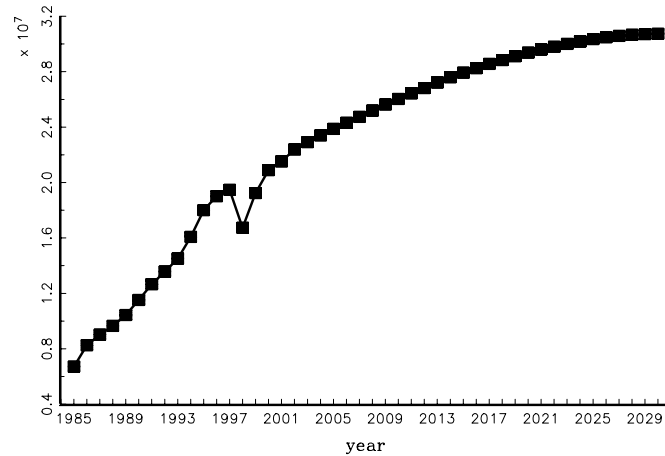
# GDRP Projection (1995 Price)

## GRDP

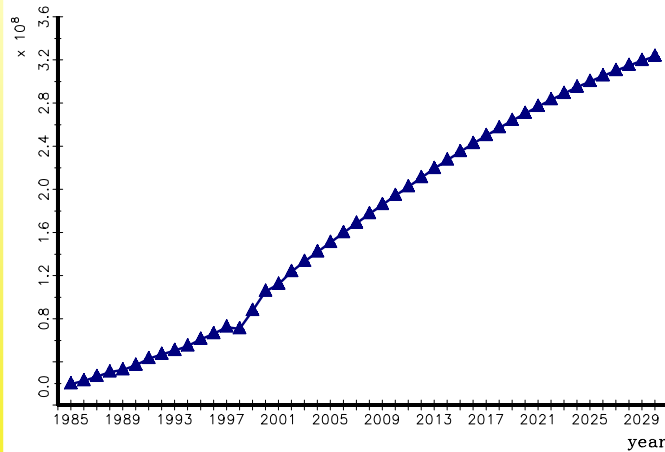
GRDP: Seoul



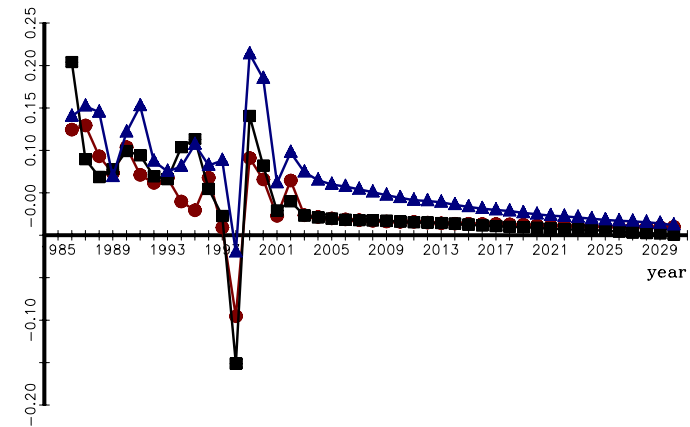
GRDP: Incheon



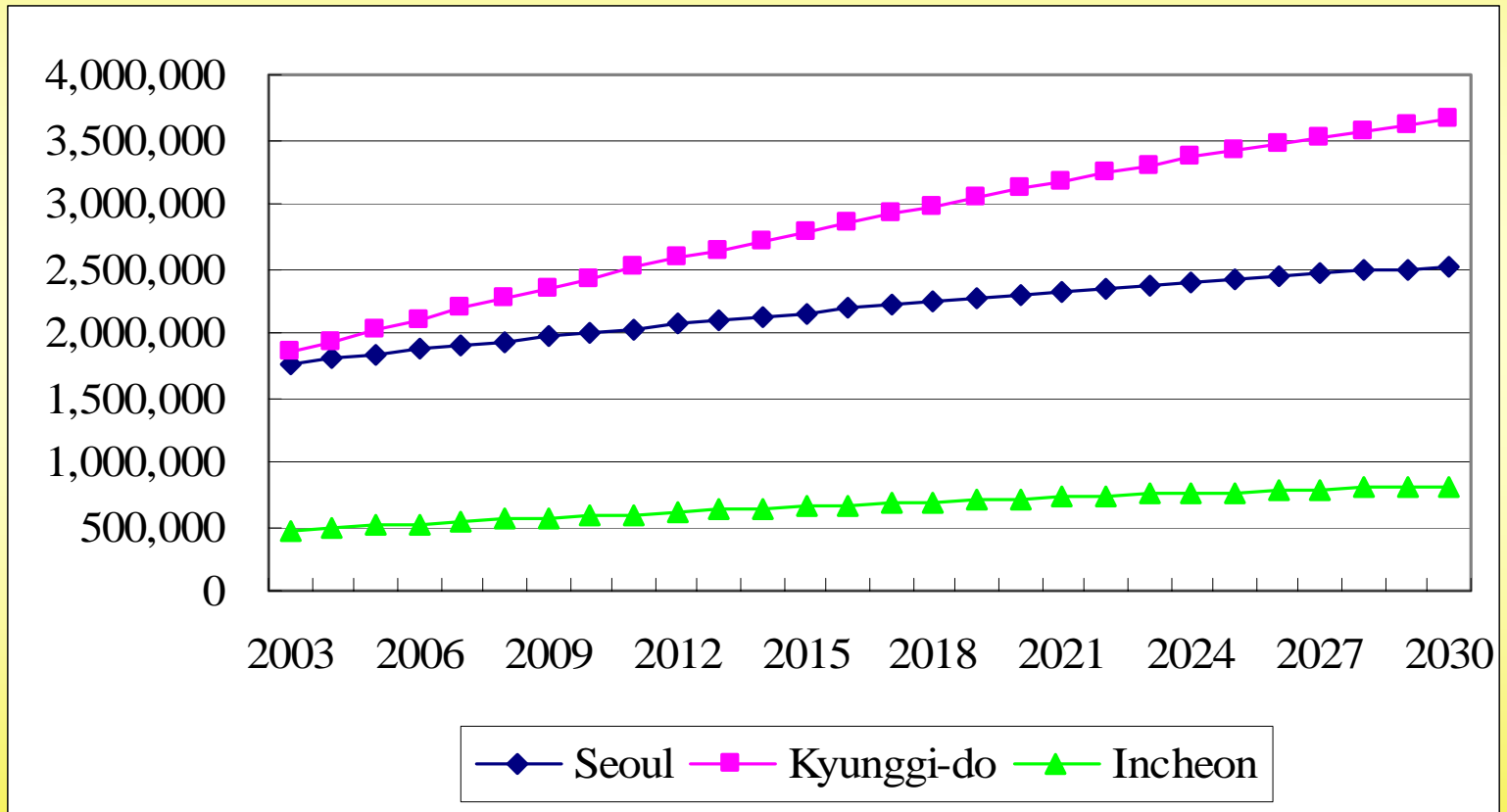
GRDP: Gyeonggi



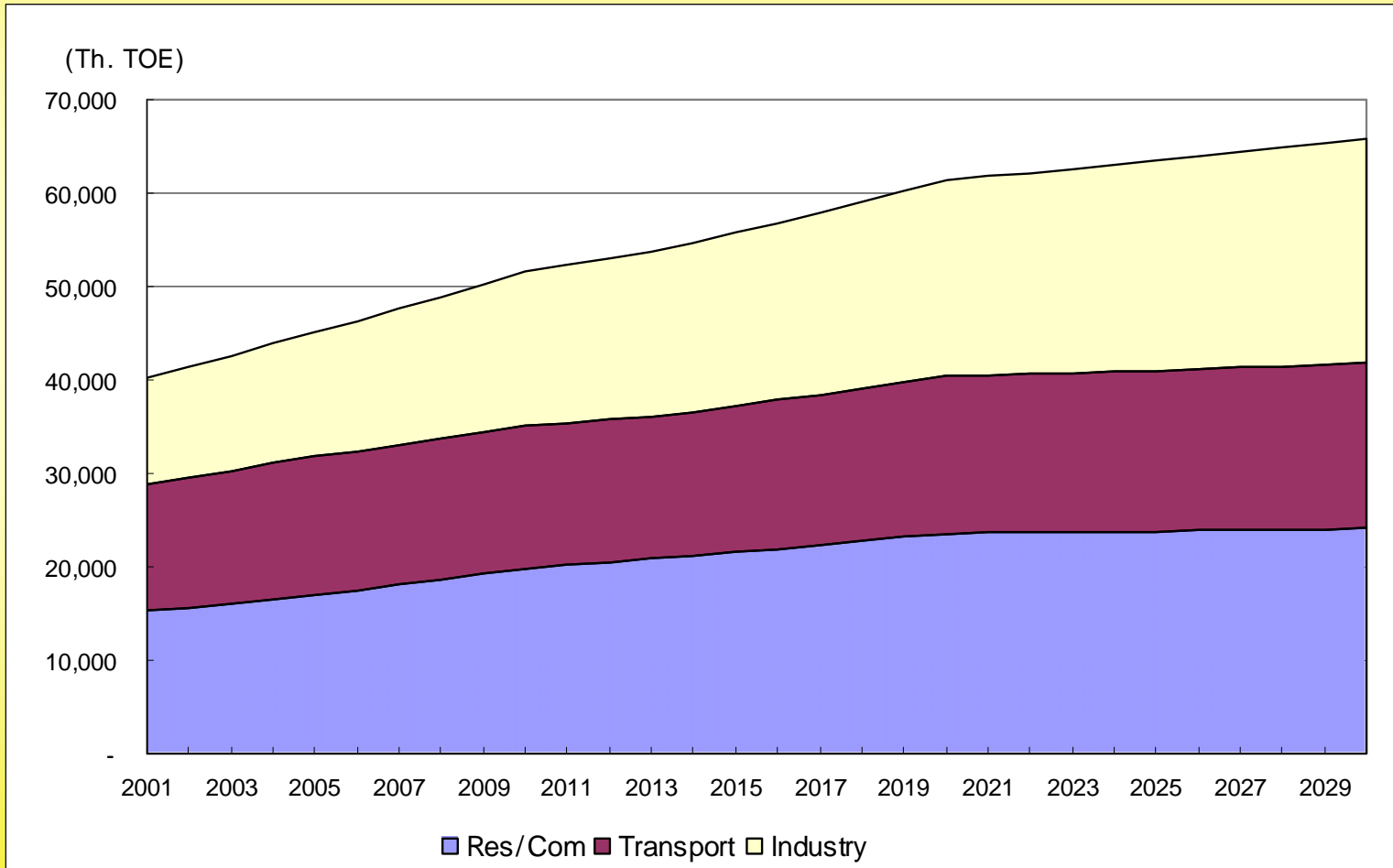
the rate of change in GRDP



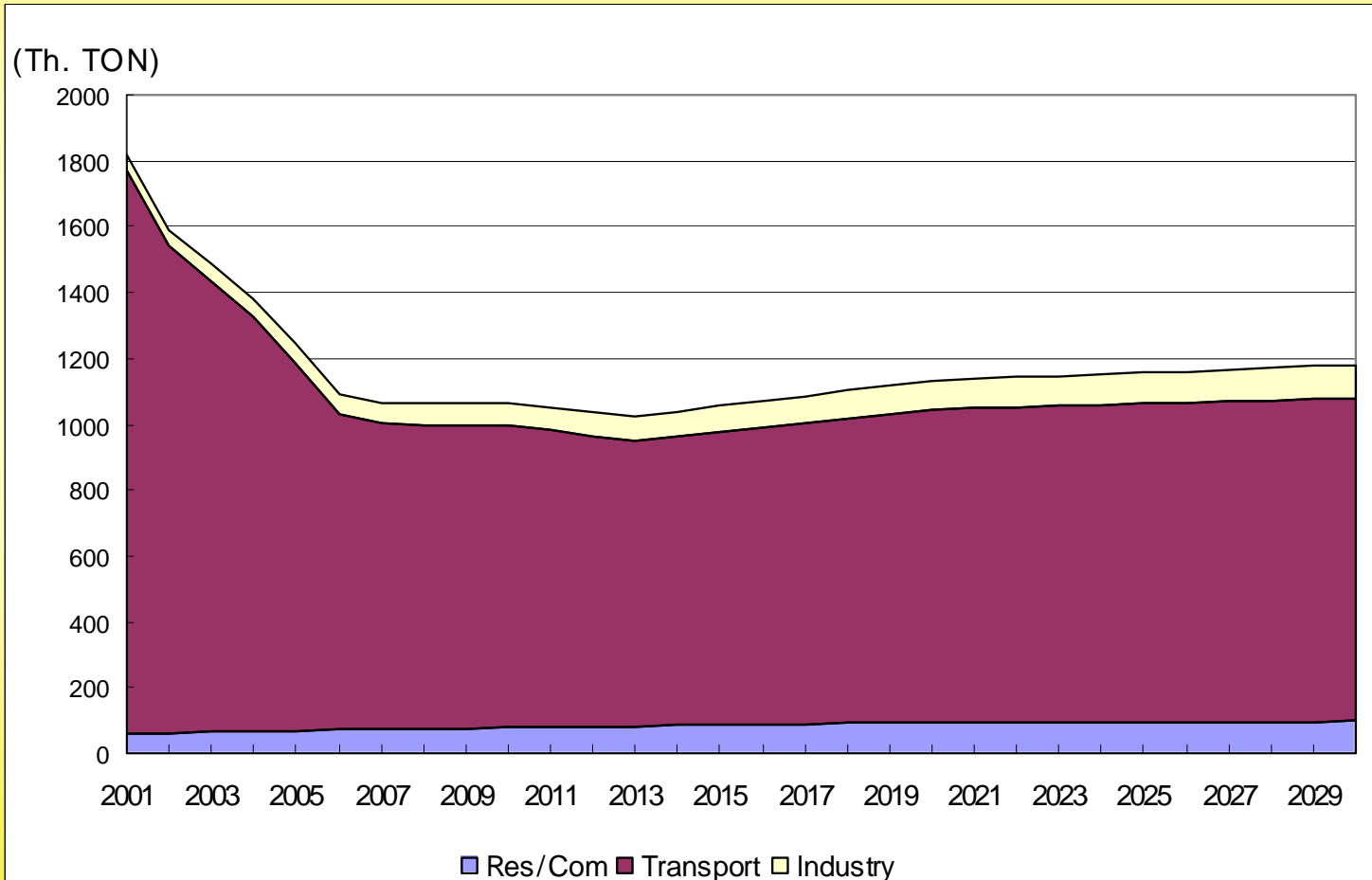
# Passenger Car Projection



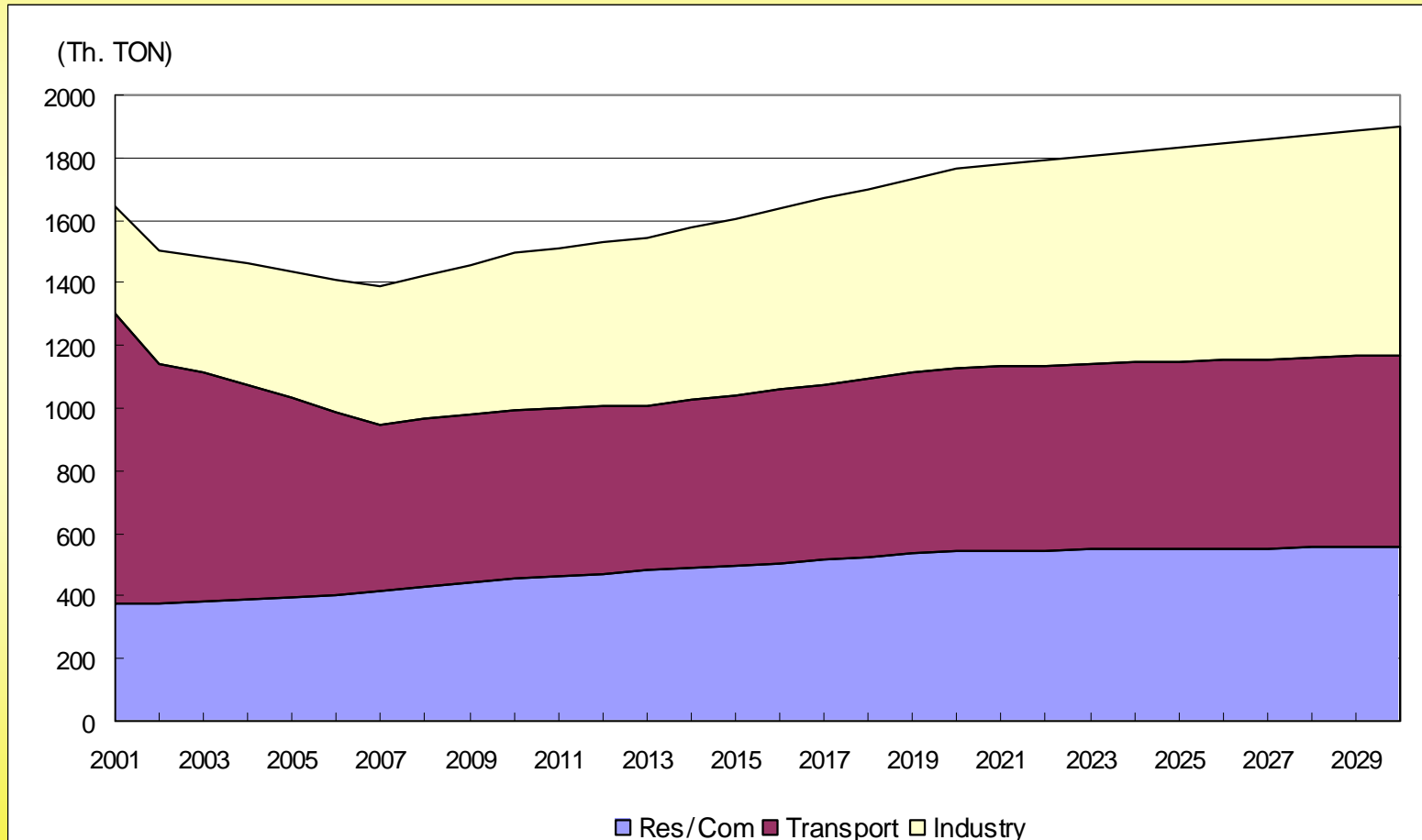
# Sectoral Projection (Metro. Seoul; Energy)



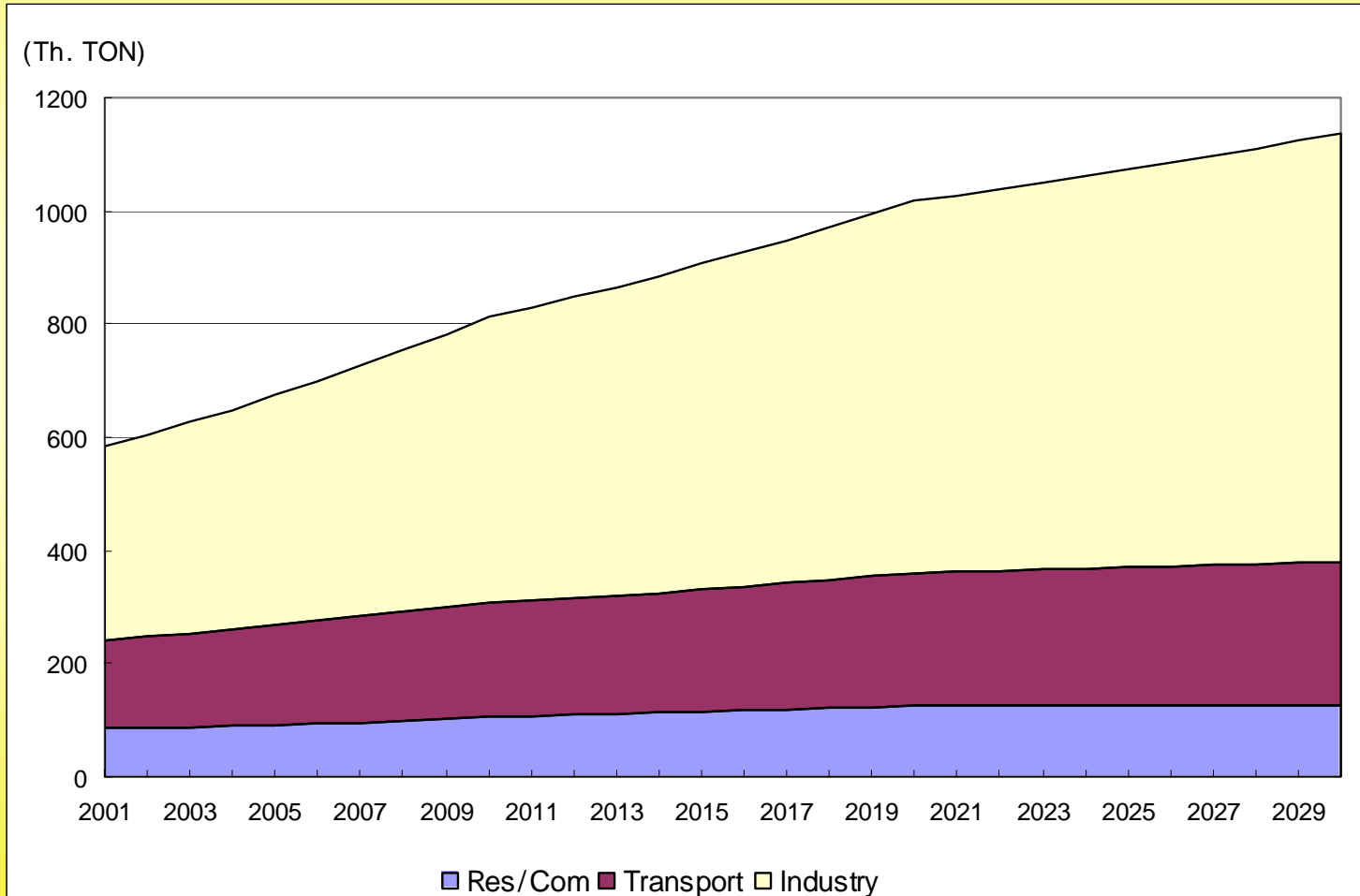
# Sectoral Projection (Metro. Seoul; CO)



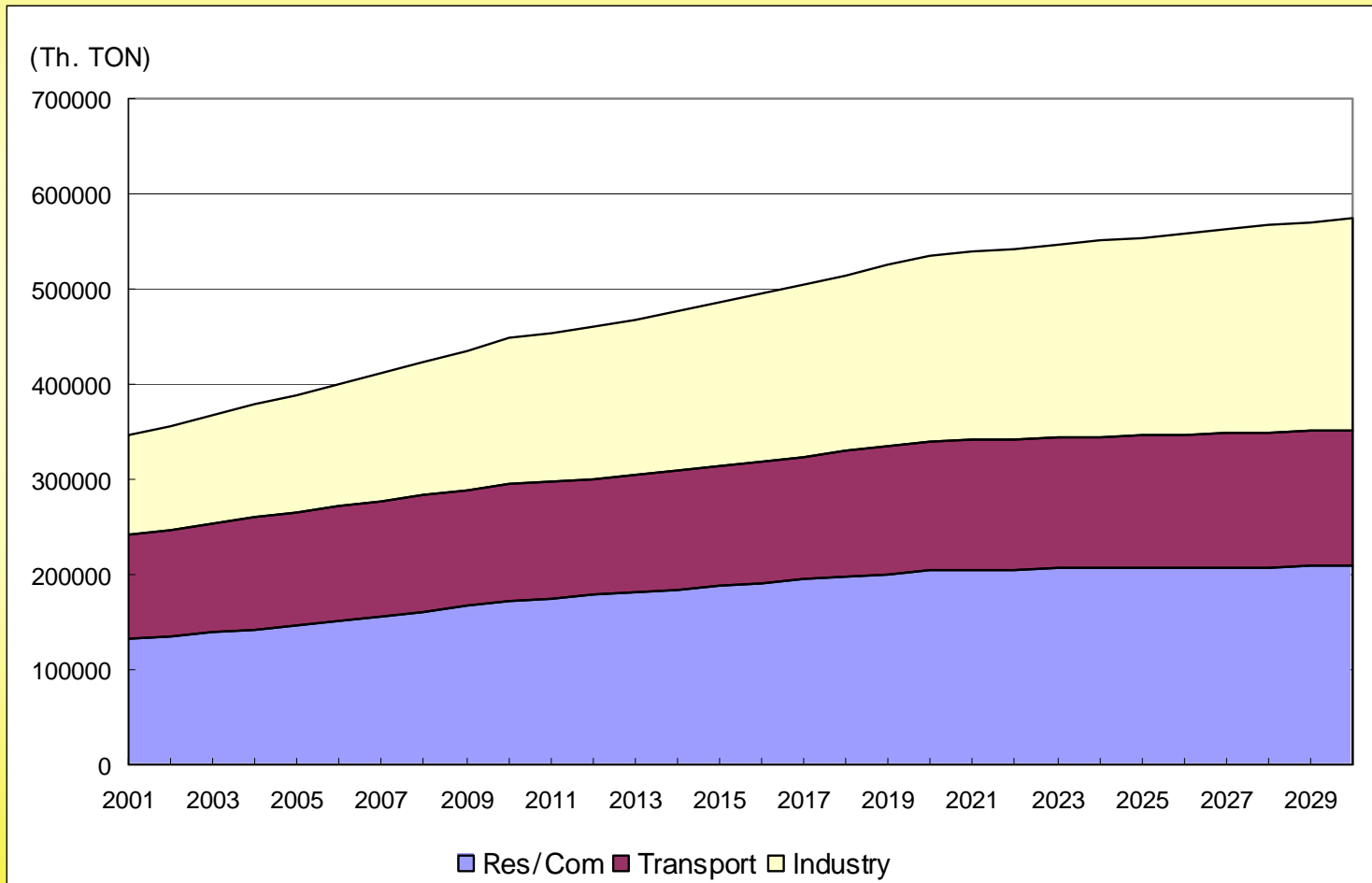
# Sectoral Projection (Metro. Seoul; PM)



# Sectoral Projection (Metro. Seoul; SO<sub>x</sub>)



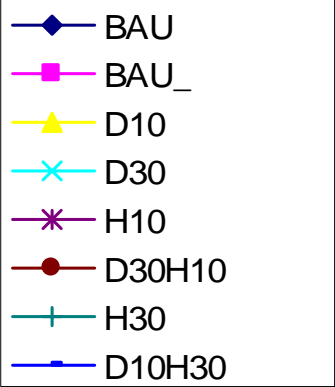
# Sectoral Projection (Metro. Seoul; CO2)



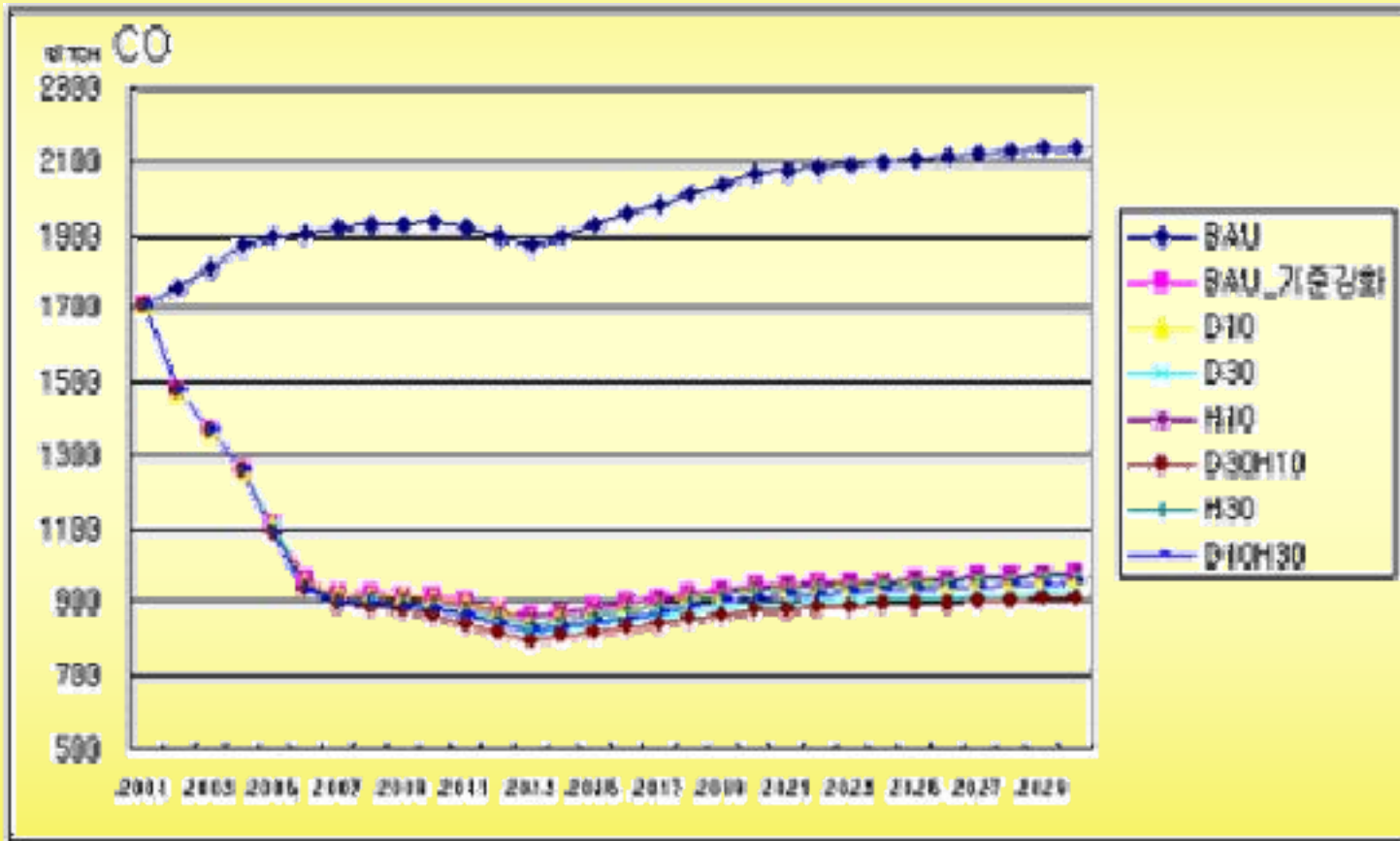


# Scenarios (Transportation)

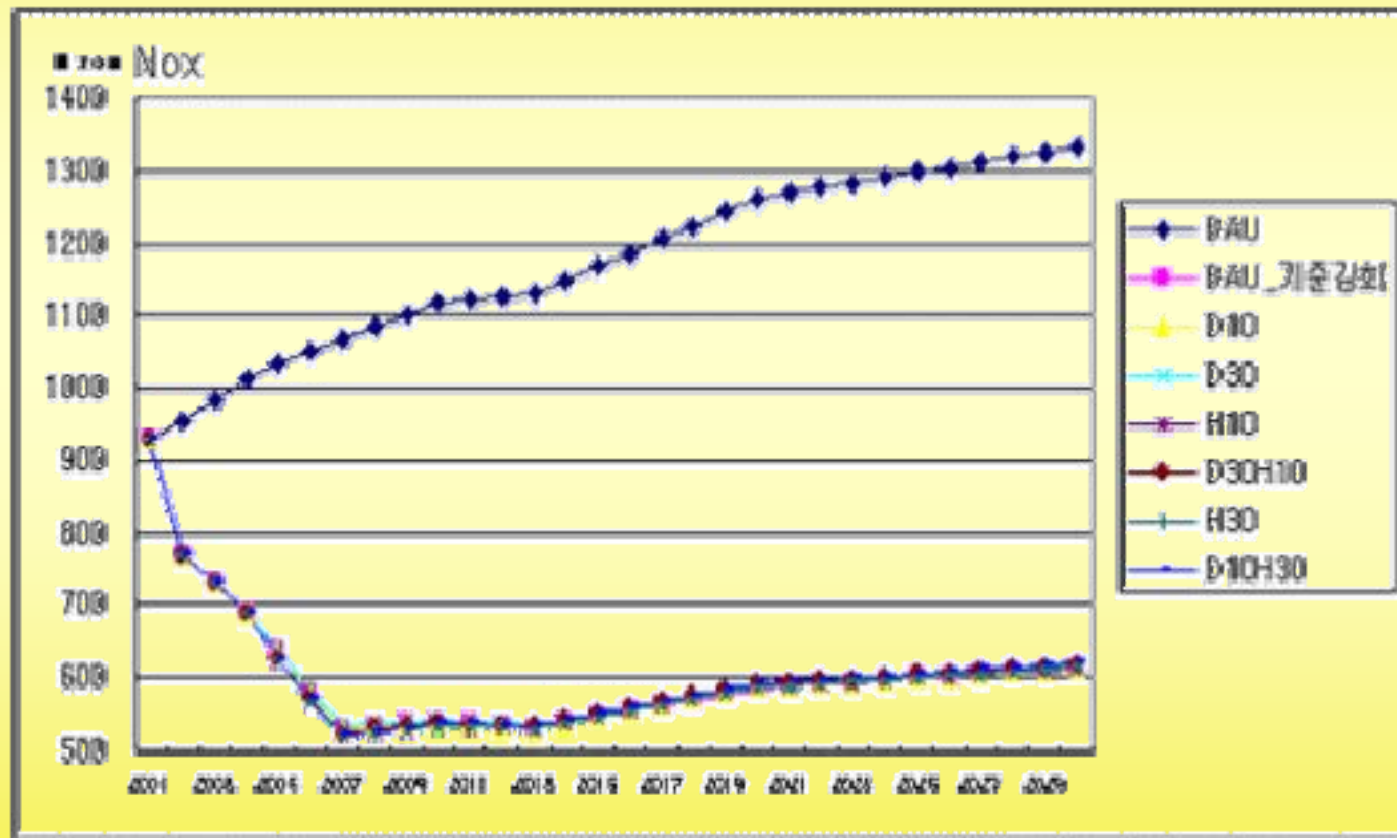
- BAU
- BAU\_Air: Tight Emission Standard (Euro4,...)
- D10: Diesel Passenger Car – 10% by 2030
- D30: Diesel Passenger Car – 30% by 2030
- H10: High Tech. Passenger Car – 10% by 2030
- H30: High Tech. Passenger Car – 30% by 2030
- D10H30: D10 + H30
- D30H10: D30 + H10

[illegible]

*(continued)*

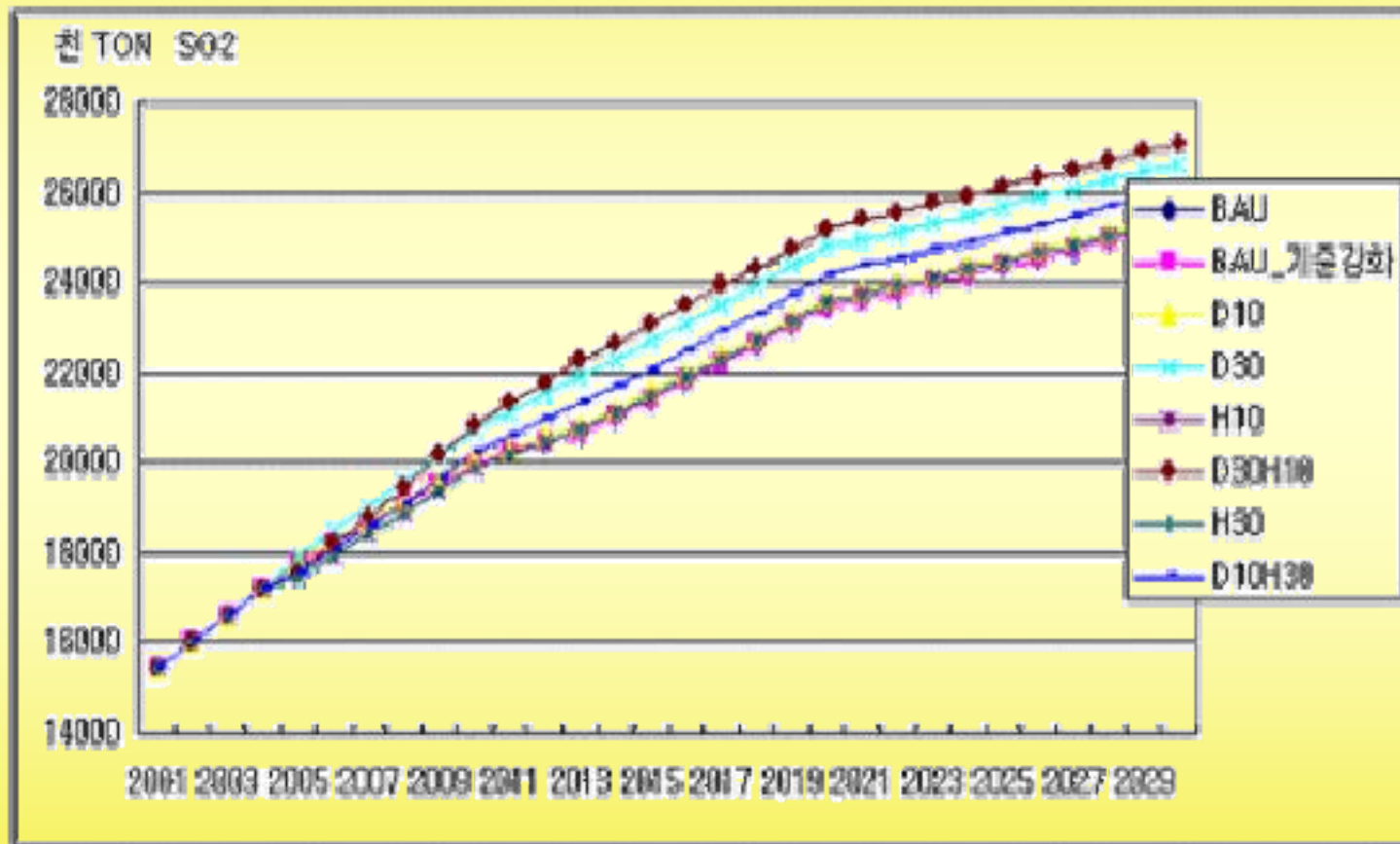


# NOx Projection

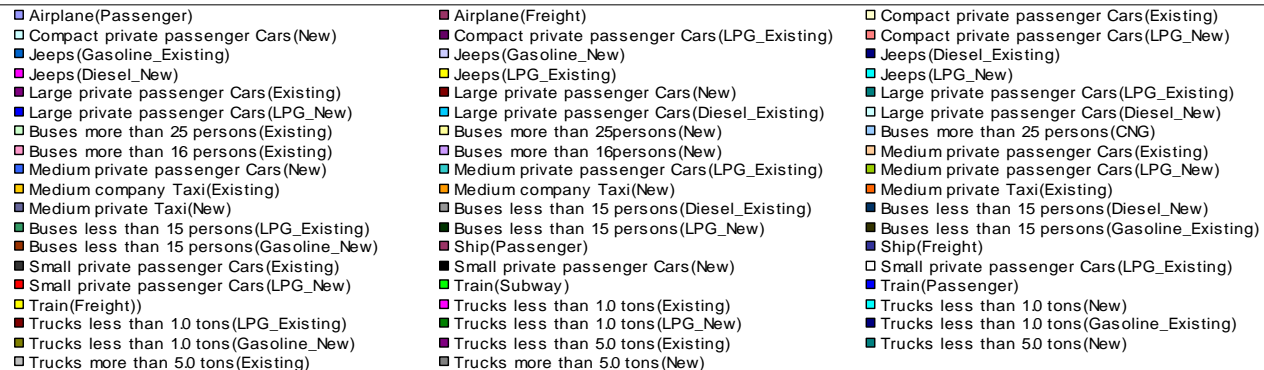
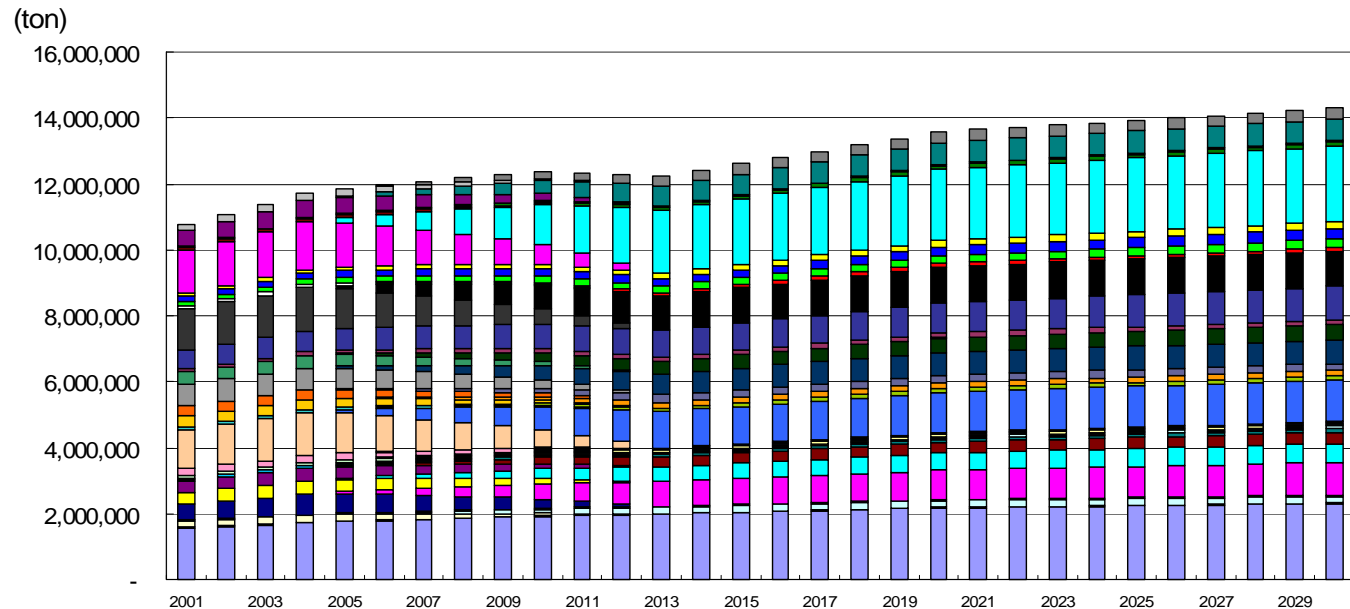


[illegible]

# SOx Projection



# CO2 Projection



# Further Studies (2004)

---

- AIM/Korea Country/Local: Database Updating
- AIM/Korea Country/Local: More Policy Analysis
- AIM/Korea Country/Local: Scenario Development (Technology)