

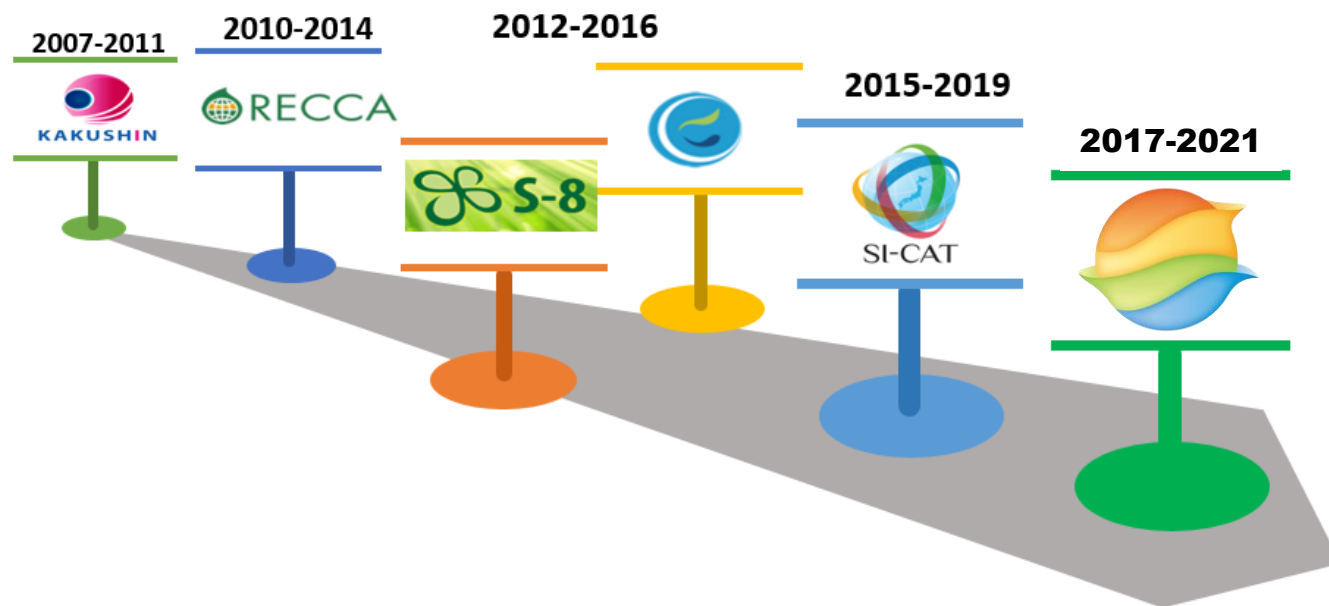
Towards comprehensive assessment of climate change impacts and adaptation in Japan

Yoshifumi Masago

Center for Climate Change Adaptation

National Institute for Environmental Studies

Japan's national research projects on adaptation



Comprehensive research on projection of climate change impacts and evaluation of adaptation (FY2020-2024)



Climate change adaptation research program (FY2021-2025)

Structures for promoting national and local adaptation under the Climate Change Adaptation Act

Impact Assessment Report
National Adaptation Plan



National Government



National Institute for Environmental Studies

cCca
Center for Climate Change Adaptation



Citizens



Private sector

Technical support

Technical support

Information sharing

Local Adaptation Plan



Local governments



Local Climate Change Adaptation Centers (LCCACs)



Citizens



Private sector

Universities



Cooperation with regional institutions



Research institutes

National research institutes



Cooperation with research institutions



Universities

Climate Change Impact Assessment Report

- The latest report (2020) categorized the impacts into **71 items in 7 fields**, and evaluate each impact based on its **significance, urgency, and confidence**.
 - 33 items (46%) in all 7 fields were classified as “highly significant and highly urgent”



Agriculture, forestry, and fisheries



Water environment and resources



Natural ecosystems



Natural disasters



Human health



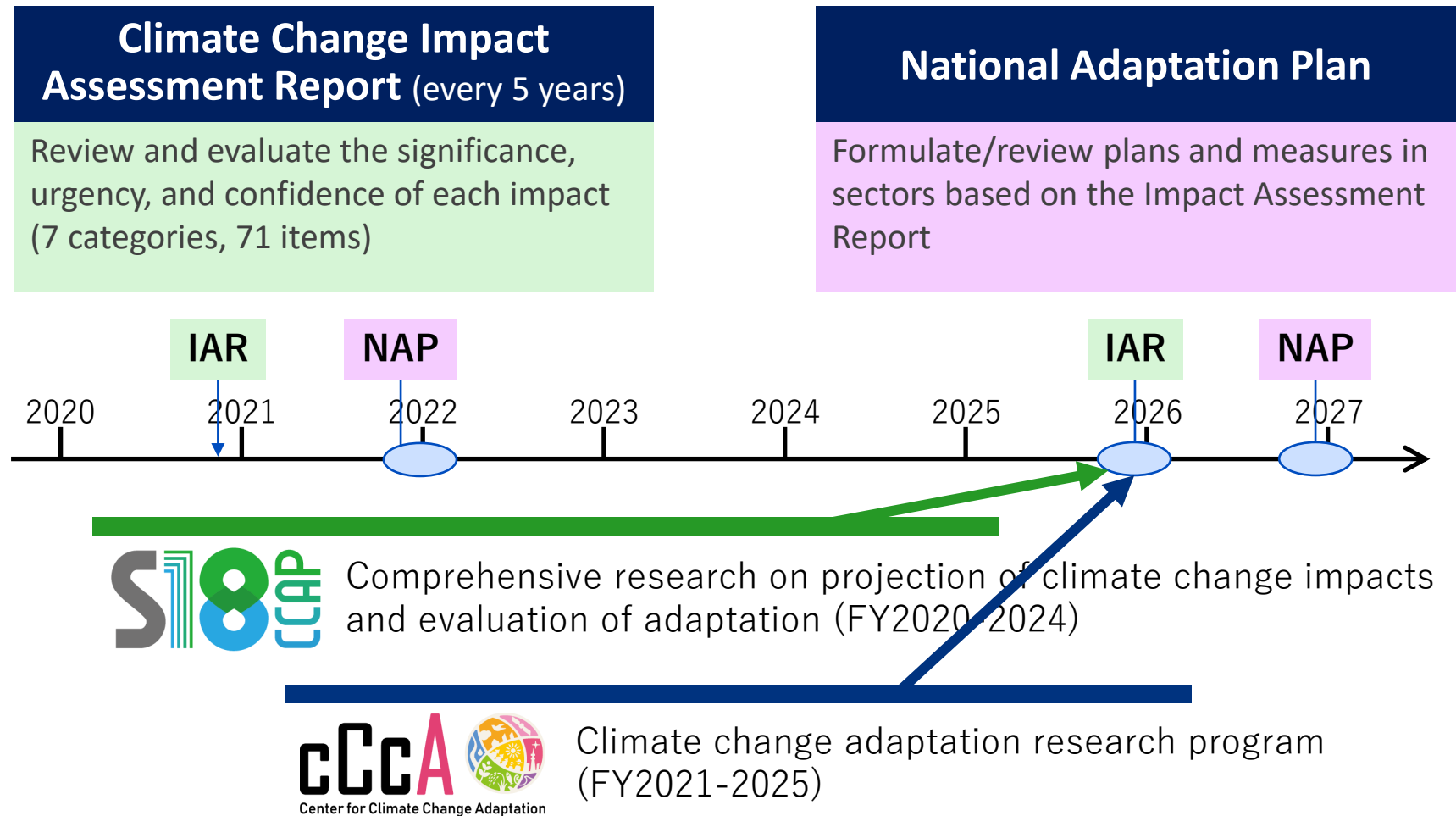
Industrial and economic activities



Life of citizens

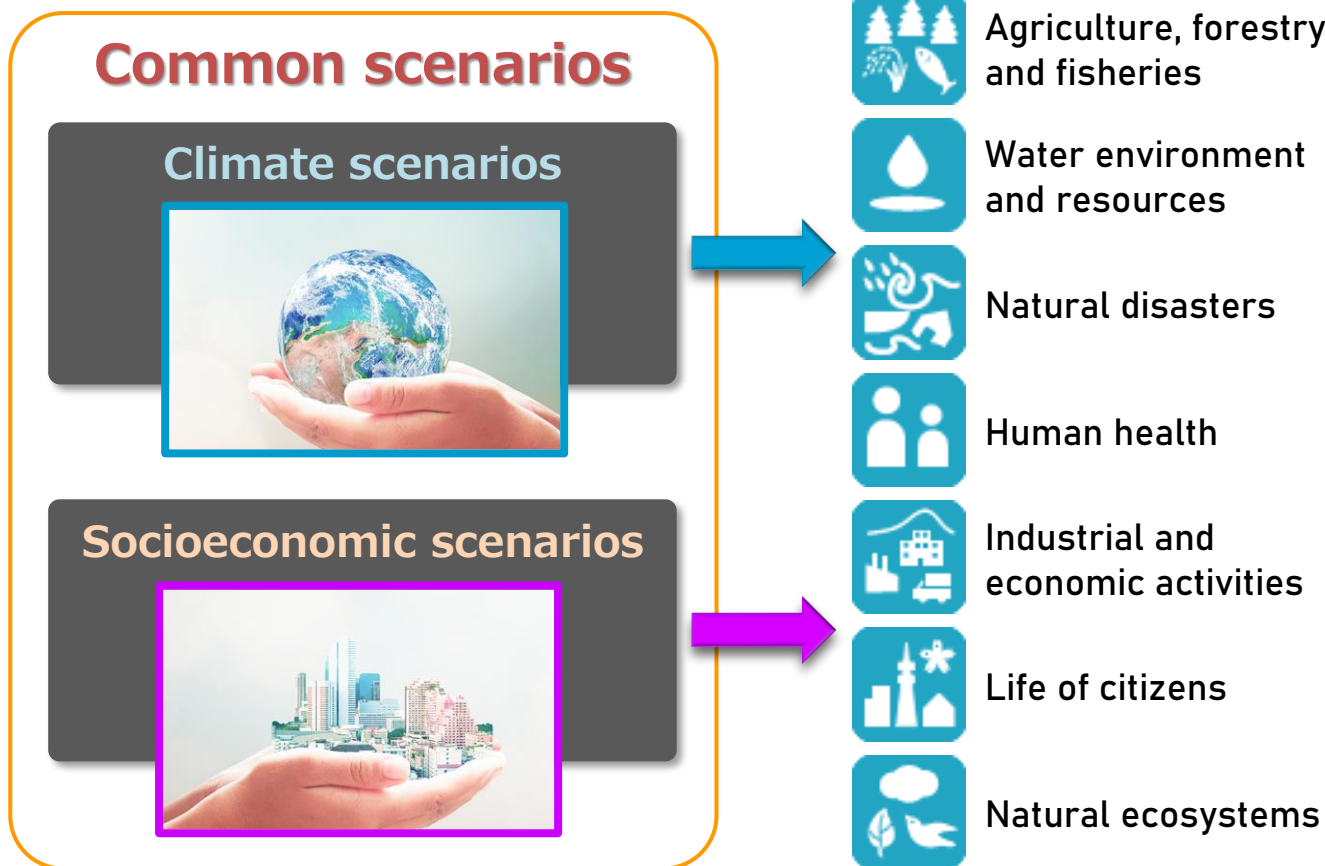
Field	Group	Item	Significance	Urgency	Confidence
Agriculture, forestry, and fisheries	Agriculture	Rice	High	High	High
		Vegetables	Moderate	High	Moderate
		Fruits	High	High	High
		Other crops	High	Moderate	Moderate
		Livestock	High	High	Moderate

Timeline of the Impact Assessment Report, National Adaptation Plan, and the two research projects

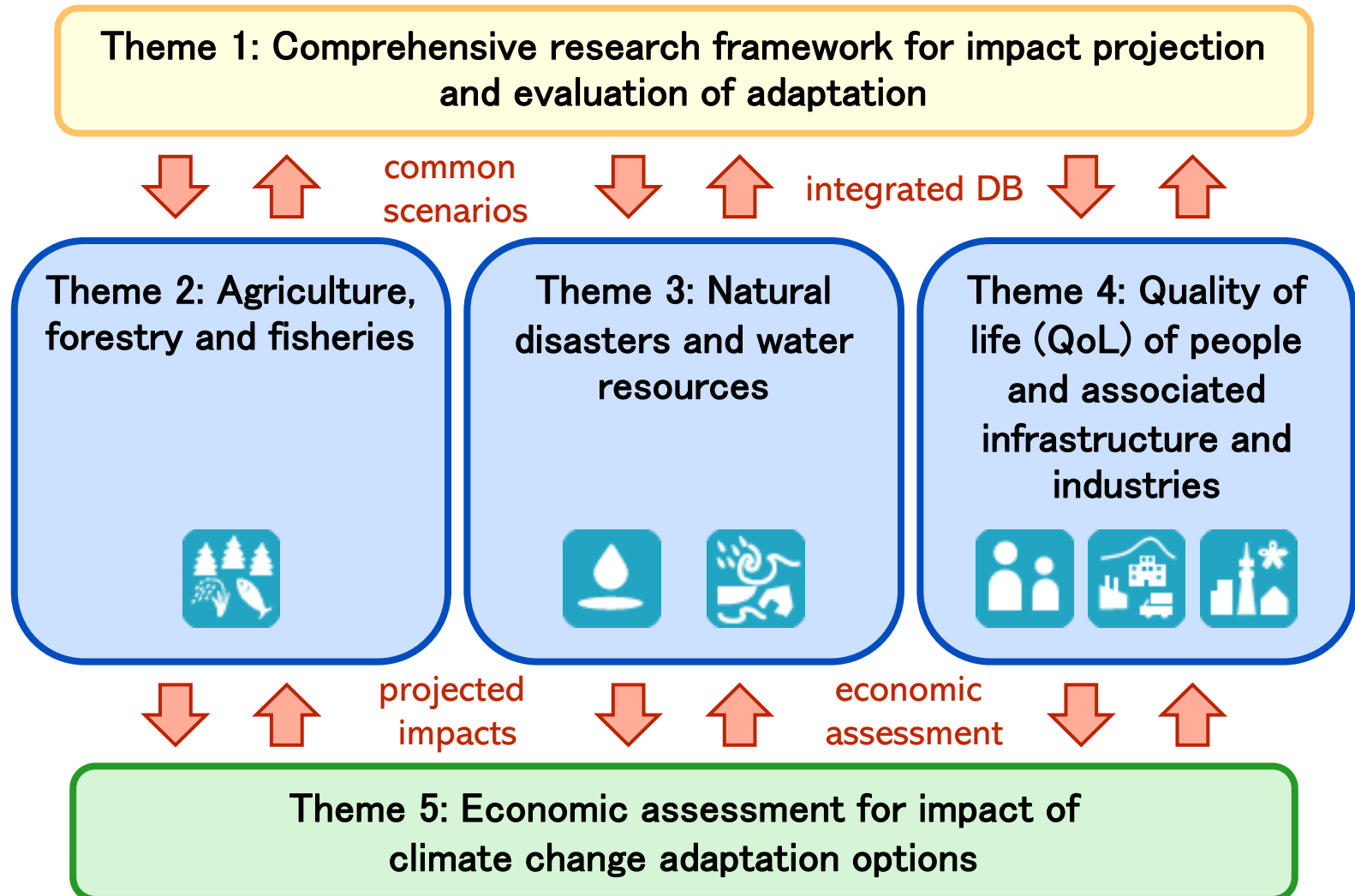


Common goal of the projects

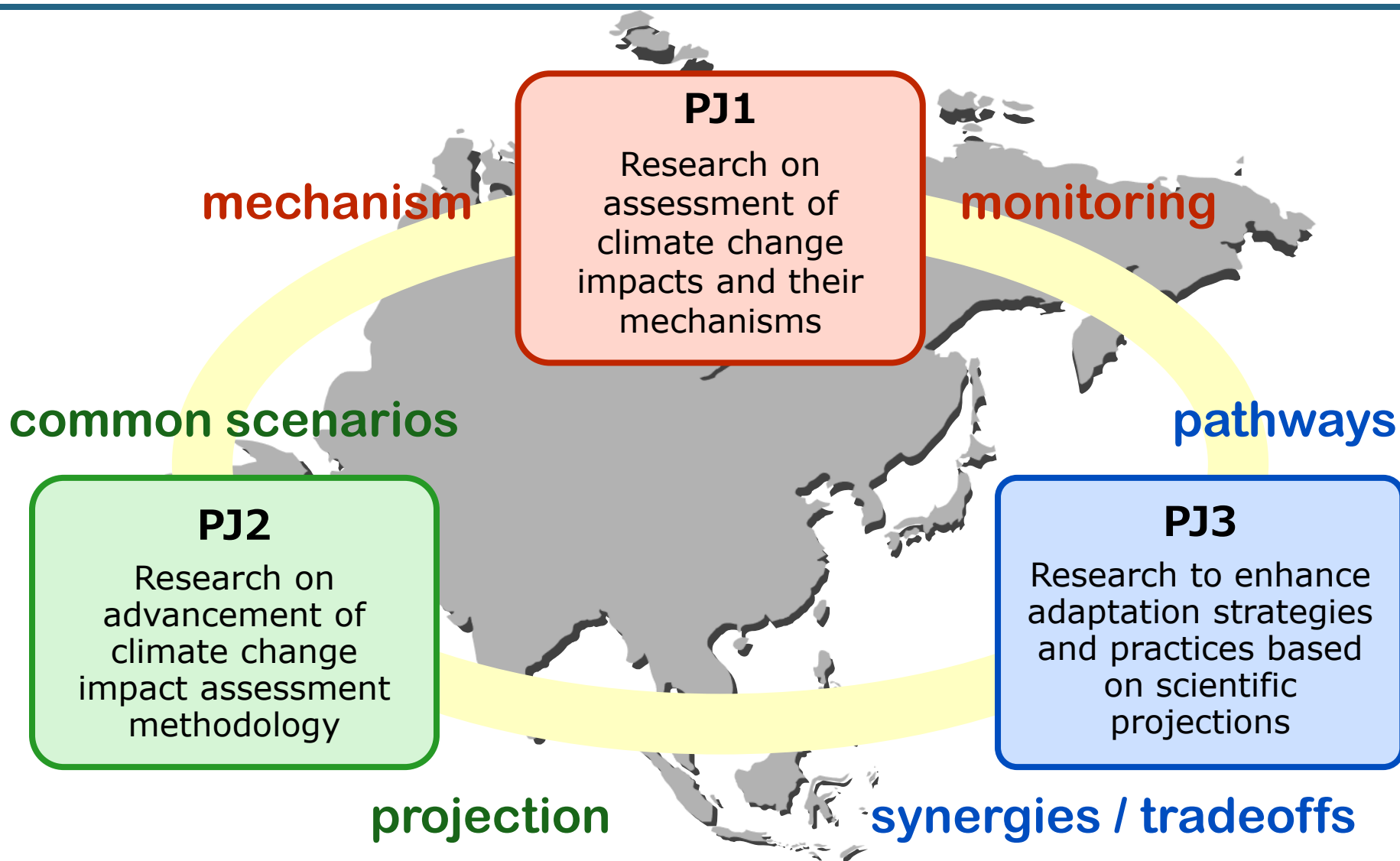
- To provide up-to-date scientific information on projection of climate change impacts and evaluation of adaptation measures to enhance adaptation in Japan.



Comprehensive research on projection of climate change impacts and evaluation of adaptation (S-18 project)



Climate change adaptation research program



Summary

- Under the Climate Change Adaptation Act, the Government is supposed to run the cycle of developing and revising the Impact Assessment Reports and Climate Change Adaptation Plan.
- In order to comprehensively assess the climate change impacts in a wide range of fields, the two research projects are collaborating to promote climate change impact projection and assessment of adaptation measures.
- It is important to use common scenarios and assumptions for comprehensive assessment, and the two projects will share the same climate and socio-economic scenarios.