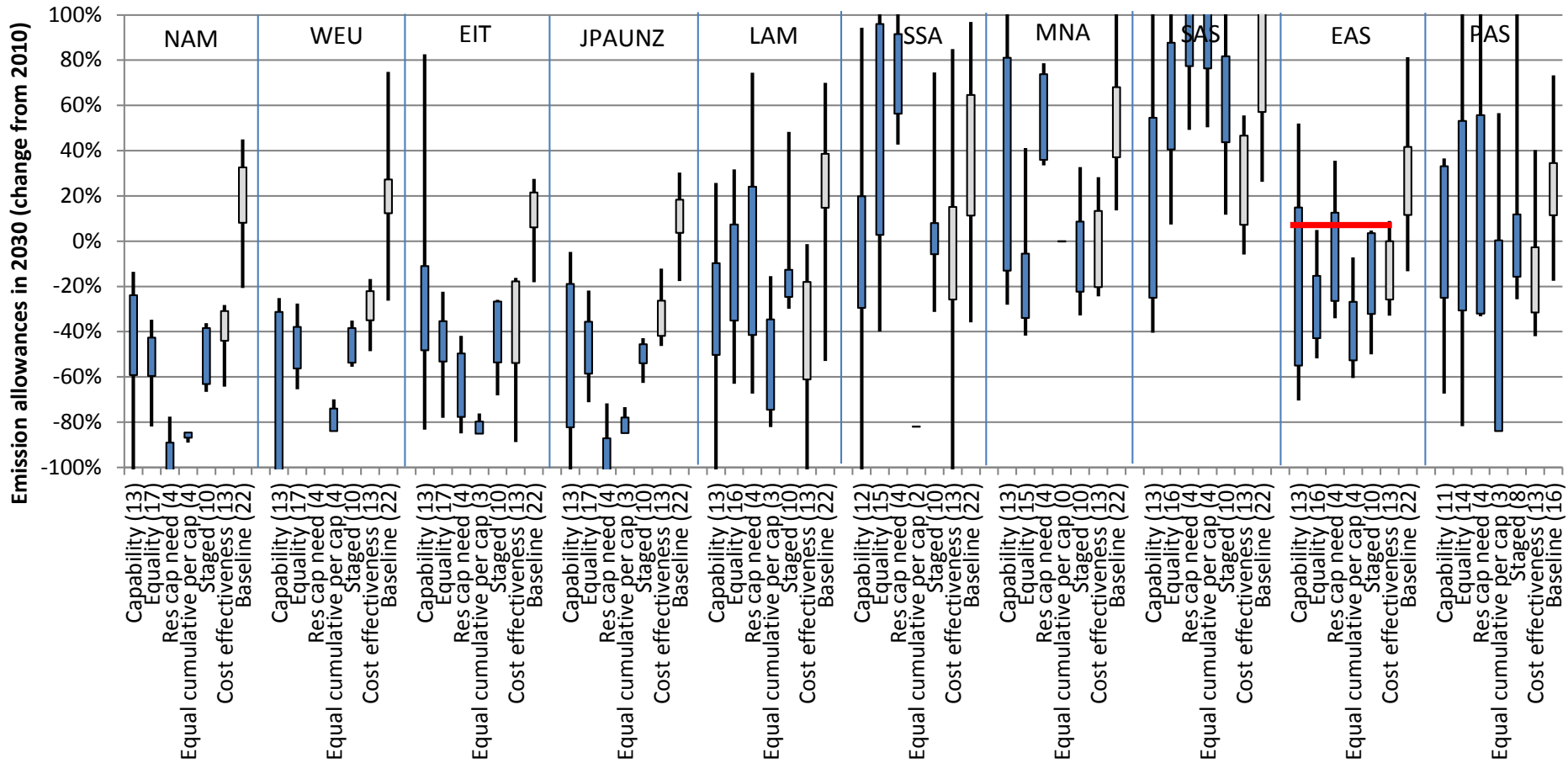


2 degree Asia: our common future

AIM Contribution to Paris

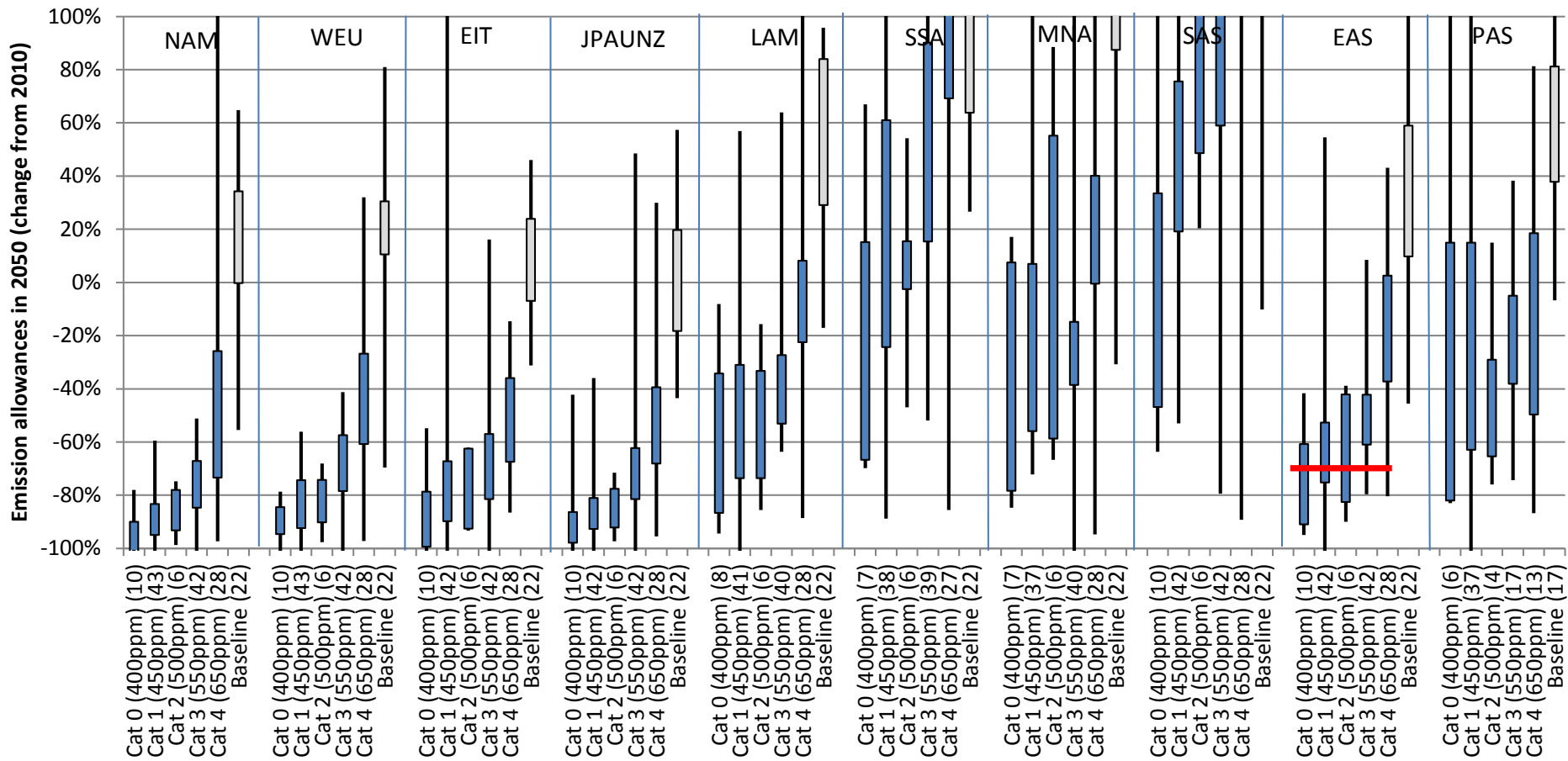
Jiang Kejun

Energy Research Institute
20th AIM International Workshop
Jan. 23-26, 2015
Tsukuba



排放分担，2030和2010年相比，十个地区

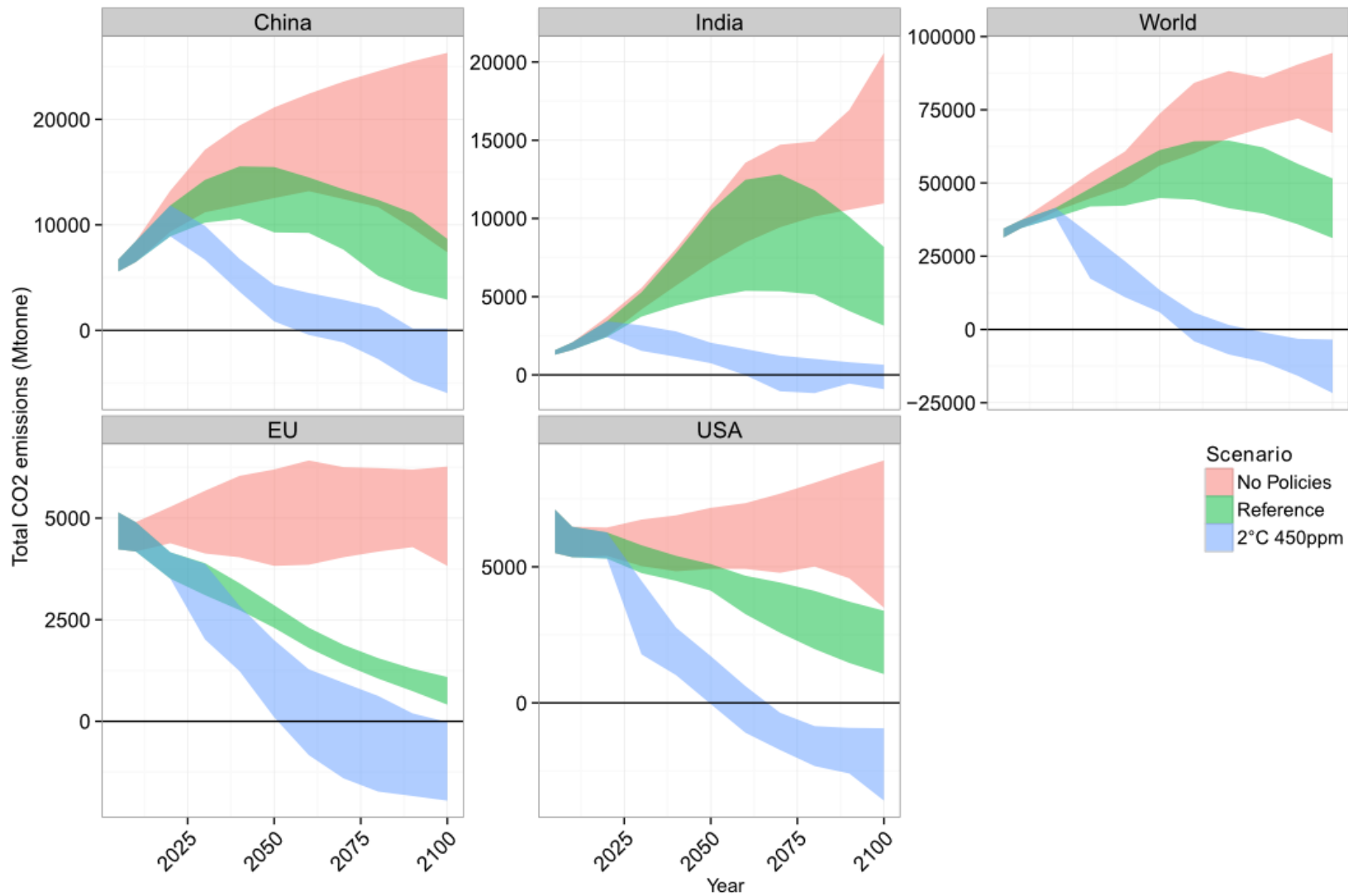
Figure 2. Emission allowances by allocation category for Cat 1, i.e. 425-475 ppmCO₂e, in 2030 relative to 2010 emissions (min, 20th percentile, 80th percentile, max). Number of studies in brackets. GHG emissions (all gases and sectors) in GtCO₂e in 1990 and 2010 were OECD90 13.4, 14.2, EIT 8.4, 5.6, ASIA 10.7, 19.9, MAF 3.0, 6.2, LAM 3.3, 3.8 .



排放分担，2050和2010年相比，十个地区

Figure 3. Emission allowances for various concentration levels in 2050 relative to 2010 emissions (min, 20th percentile, 80th percentile, max). Number of studies in brackets. GHG emissions (all gases and sectors) in GtCO₂e in 1990 and 2010 were OECD90 13.4, 14.2, EIT 8.4, 5.6, ASIA 10.7, 19.9, MAF 3.0, 6.2, LAM 3.3, 3.8

LIMIT Project finding



2 Degree Asia

- ◆ Emission pathway consistent with global 2 degree target scenarios by countries
- ◆ Country specified roadmap for commitment
- ◆ Financial needs

CO2 Emission

