
Asia-Pacific Climate Change Adaptation Information Platform (AP-PLAT): Bridging Science and Stakeholders

Yuji Masutomi

Asia-Pacific Climate Change Research Section
Center for Climate Change Adaptation (CCCA),
National Institute for Environmental Studies (NIES)



National
Institute for
Environmental
Studies, Japan



AP-PLAT

Asia-Pacific Climate Change Adaptation Information Platform

<https://ap-plat.nies.go.jp/>

What is



AP-PLAT ?

Asia-Pacific Climate Change Adaptation Information Platform

<https://ap-plat.nies.go.jp>

Asia-Pacific Climate Change Adaptation Information Platform

Information platform (=web page) that provides a wide range of information on climate change and adaptation

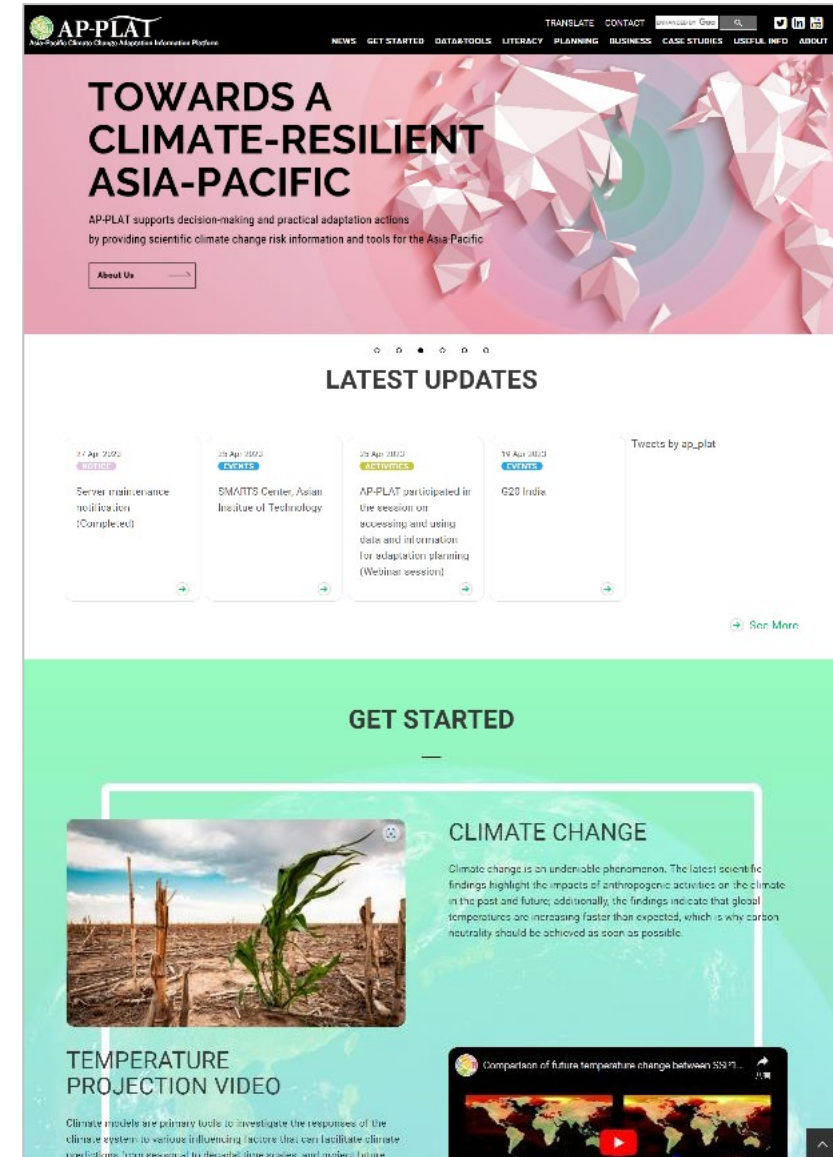
Established in 2019

Operated by:

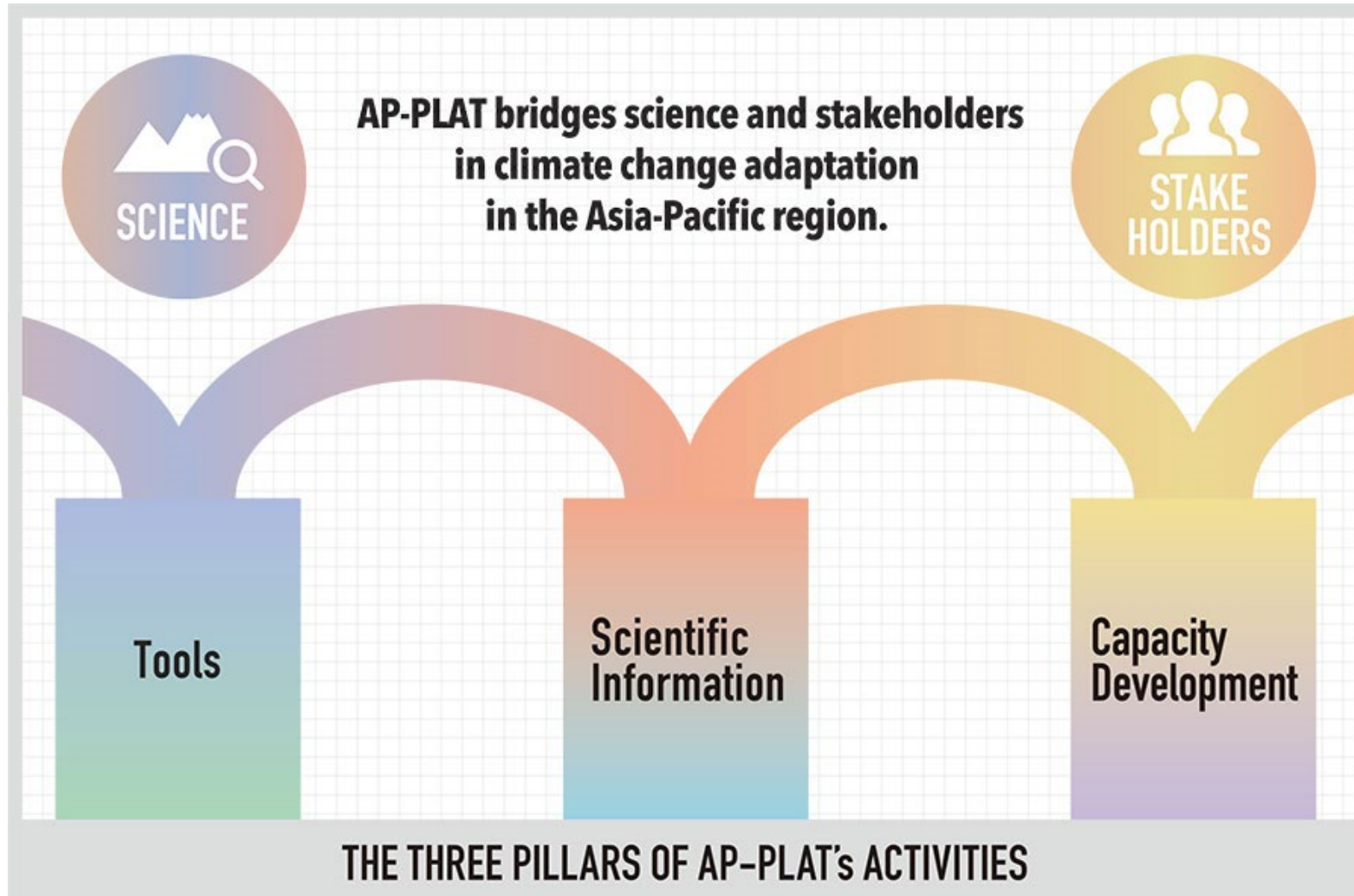
- National Institute for Environmental Studies (NIES)
- Ministry of Environment Japan (MOEJ)
- Institute for Global Environmental Strategies (IGES)



Mission: to **support science-based decision making and effective climate change adaptation measures in Asia-Pacific countries** ...and globally



AP-PLAT's Approach



- **3 pillars of AP-PLAT activities:**
 - Tools
 - Scientific Information
 - Capacity Development

Kintai Bridge



In Iwakuni city

AP-PLAT website

AP-PLAT

GET STARTED DATA TOOLS ADAPTATION LEARNING ADAPTATION PLAN BUSINESS CASE STUDY USEFUL INFO NEWS ABOUT

TOWARDS CLIMATE-RESILIENT ASIA-PACIFIC

AP-PLAT supports decision-making and practical adaptation actions by providing scientific climate change risk information and tools for the Asia-Pacific

About Us

LATEST UPDATES

Global News: 23 Apr 2021 1 Update: Global News on Adaptation

Activities: 23 Apr 2021 2 Video message from NIES Center for Climate Change Adaptation for "Platform for Redesign 2022"

International Cooperation: 23 Apr 2021 3 Update: International Cooperation on climate change impact assessment and promotion of adaptation by the Ministry of the Environment of Japan

Tools & Guidelines: 23 Apr 2021 4 Country-Level Impacts of Climate Change (CLICC)

Tools to the job: How you can help your "Management Adaptation Information System" (MAIS) AP-PLAT requires the public information only grants are business. Contents are updated by the user and please review the update. Please see a notification. Email: View on Twitter

GET STARTED

CLIMATE CHANGE

Climate change is an unquestionable phenomenon. The latest scientific findings show the impact of human activity on the climate in the past and in the future, and that global temperatures are rising faster than expected, which is why we need to achieve carbon neutrality as soon as possible.

TEMPERATURE PROJECTION VIDEO

Climate models are the primary tools available for investigating the response of the climate system to various forcings, for making climate predictions on a range of time scales from seasonal to decadal, and for making projections for the future climate of the coming century and beyond. This animation shows the change in air temperature (2 m from surface) at each point on the earth from around 1980 to the future using a projection by the Model for Interdisciplinary Research on Climate version 6 (MIROC6).

IMPACTS & ADAPTATION

The effects of climate change are already being felt around the world. In addition to the widely known mitigation measures, such as efforts to reduce greenhouse gas emissions, it is increasingly important to adapt to the impacts of climate change that are already occurring now.

CMIP6 VIEWER

Climate Projections for All

Area Settings: Level 0 (0.05°), Level 1, Level 2

Temperature (Difference from 1981-2000)

CMIP6 VIEWER Chart: Max: 10, Min: -10, Units: Celsius

GLOBAL NEWS ON ADAPTATION

- North America: 12 May 2021 [US] New York City Adopts New Zoning Rules to Protect Coastal Area From Climate Change
- Europe: 12 May 2021 [EU] ECCA 2021 - 5th European climate change adaptation conference
- World: 3 May 2021 [GCF] Green Climate Fund updates its strategic plan and sets new portfolio targets
- North America: 23 Apr 2021 [USA] EPA announces initiatives to support environmental justice climate action

ACTIVITIES

What is AP-PLAT? Video message from NIES Center for Climate Change Adaptation for "Platform for Redesign 2022"

10 Jul 2021 AP-PLAT announced in the Asia-Pacific Climate Week 2021

05 Jul 2021 10 and above discussed climate adaptation platforms on a RECAP event

03 Jun 2020 Video message from NIES Center for Climate Change Adaptation for "Platform for Redesign 2022"

14 Feb 2020 Research Climate Resilient World: Challenges for Asia-Pacific Climate Change Adaptation Information Platform in disaster risk reduction

SCIENTIFIC DATA & TOOLS

ClimoCast

ClimoCast is an online tool that allows users to check future climate projections in their region based on the latest climate data (CMIP6 data). Users can compare four major emission scenarios (SSP3-3.0, SSP3-3.6, SSP5-3.6, SSP5-8.5), compare results of ten different climate models, and download the data. ClimoCast was developed by AP-PLAT (CCCA) and its mission is to make climate projections easily accessible to all people, including those without academic background.

CLIMATE IMPACT VIEWER

Climate Impact Viewer shows the results of climate change impact assessment in various sectors including climate, water resources, vegetation, agriculture and health. Users can visually compare global projections across sectors and time periods.

AP-PLAT CLIMATE IMPACT VIEWER

Map Chart

MOCJ S-14 project Impact Orso Yield Rice-Future projection MIROC-ESM-CHEM RCP8.5 86PS On (Impacted 2001-2100 No adaptation)

MOCJ S-14 project Impact Crop Yield Future projection MIROC-ESM-CHEM RCP8.5 SSP3 On Irrigated 2091-2100 No adaptation 60 %

Map data ©2021 Google, SK Telecom Terms of Use

Capacity development

- E-learning courses on AP-PLAT website
- Training WS in person and online
- Guidebooks
- ...

Japan International Cooperation Agency (JICA) Training session, Japan, April 2023



Workshop on the Compound and Cascading Disaster Risk Management in Bangladesh, By IGES, January 2023



E-learning courses

E-LEARNING COURSES

Followings are the self-paced e-learning videos for the emerging adaptation issues such as Nature-based Solutions, Compound & Cascading Disaster Risks and instructions of climate projection tools. Start now to learn.

SEARCH ITEMS

TARGET	AREA	METHOD
<input type="checkbox"/> National government	<input type="checkbox"/> Agriculture, Forestry and Fisheries	<input type="checkbox"/> Water
<input type="checkbox"/> Local government	<input type="checkbox"/> Natural ecosystems	<input type="checkbox"/> DRR
<input type="checkbox"/> Research & Education	<input type="checkbox"/> Urban	<input type="checkbox"/> Health
<input type="checkbox"/> NGO & Community		<input type="checkbox"/> Economy
		<input type="checkbox"/> Finance

Search

DEVELOPING CONCEPT NOTES FOR THE GCF SIMPLIFIED APPROVAL PROCESS
August 2022
This course has been carefully designed to provide guidance on the fundamental components of project development following the prerequisites of learning-by-doing. After completing the course, you will gain the ability to develop a high-quality concept note for the Green Climate Fund's Simplified Approval Process (SCF-SAP), which will help you apply for project preparation funding and advance toward the Funding Proposal stage.

INAS: INSPIRED BY NATURE-BASED ACTIONS AND SOLUTIONS
October 2021
"INAS" originates from the Japanese word *inatsu* which means to proactively cope with disasters by making use of the natural environment. Showcasing good practices on NBS, this website is a source of inspiration for how communities can address various societal issues, including climate change by being in harmony with nature.

NATURE-BASED SOLUTIONS FOR THE LOCAL COMMUNITIES
October 2021
This e-learning course on NBS is designed to help local officers in vulnerable countries learn how to integrate NBS into their policy/planning processes with respect to climate change adaptation, disaster risk management, and other issues.

https://ap-plat.nies.go.jp/adaptation_literacy/resources/index.html



CMIP6 Climate Projection Tool

Go to ClimoCast →

ClimoCast

With ClimoCast you can see future climate projections on the map, compare climate scenarios and download the data.

<https://a-plat.nies.go.jp/ap-plat/cmip6/global.html>

Vision: **Climate Projections for ALL**

Quick and easy access to CMIP6 climate projections to everyone.



CMIP6 Climate Projection Tool

Go to ClimoCast →

ClimoCast

With ClimoCast you can see future climate projections on the map, compare climate scenarios and download the data.

<https://a-plat.nies.go.jp/ap-plat/cmip6/global.html>

Do you know future temperature increase in your city?

How do you get the information?

What is the fastest and easiest way?



CMIP6 Climate Projection Tool

Go to ClimoCast →

ClimoCast

With ClimoCast you can see future climate projections on the map, compare climate scenarios and download the data.

<https://a-plat.nies.go.jp/ap-plat/cmip6/global.html>

ClimoCast provides CMIP6 data by only two steps!!

Tutorial series on ClimoCast (Youtube)

- Introduction

<https://www.youtube.com/watch?v=WMr4EWnFenQ>

- Map mode

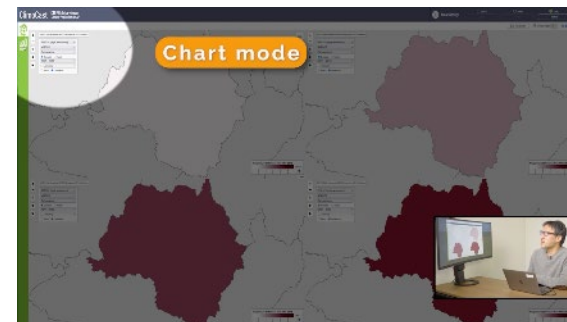
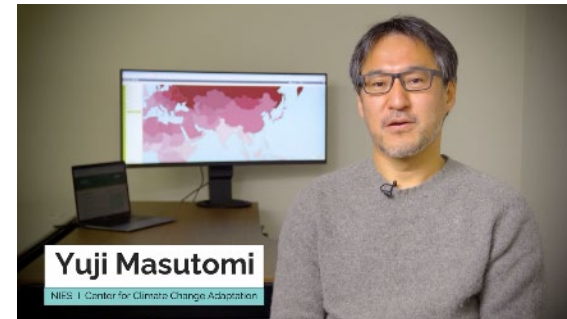
<https://www.youtube.com/watch?v=iO6DUSnqnHM>

- Chart mode

<https://www.youtube.com/watch?v=qnRK3eI5Wqo>

- Conclusion

<https://www.youtube.com/watch?v=HGGjMfw4zyw>



Supporting/partner organizations of AP-PLAT



Risk-informed
Early Action
Partnership



RRC.AP
Regional Resource Centre for
Asia and the Pacific



Deloitte.
デロイト トーマツ



Food and Agriculture
Organization of the
United Nations



ICIMOD



IDEA Consultants, Inc.

teri | THE ENERGY AND
RESOURCES INSTITUTE
Creating Innovative Solutions for a Sustainable Future

Your organization is very welcome to join us!

Thank you so much!

Yuji Masutomi
masutomi.yuji@nies.go.jp

Center for Climate Change Adaptation (CCCA),
National Institute for Environmental Studies (NIES)



AP-PLAT

Asia-Pacific Climate Change Adaptation Information Platform

<https://ap-plat.nies.go.jp/>