



# ALLOCATING FOLU NET SINK TARGET TO SUB-NATIONAL

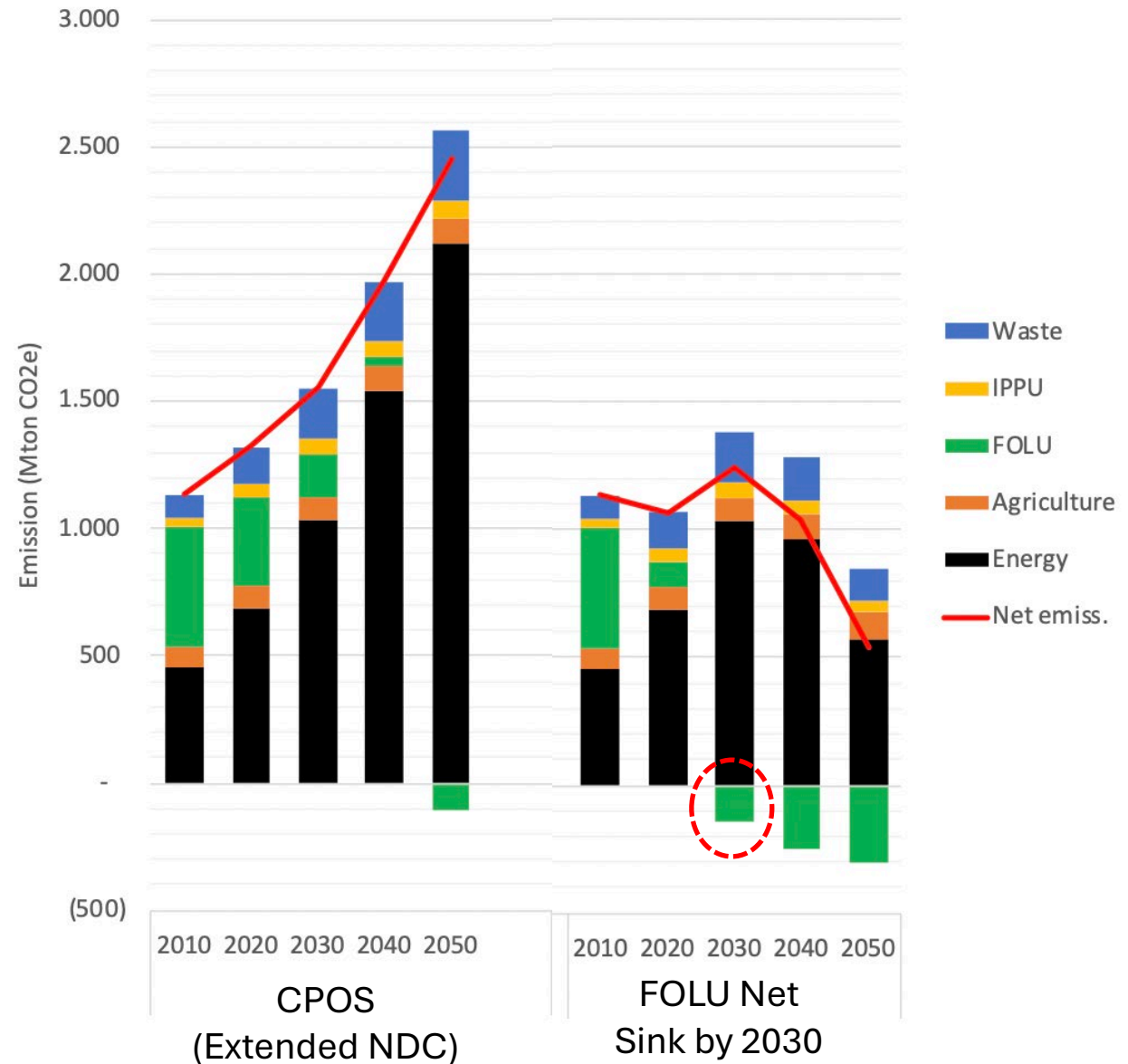
Presented by  
Rizaldi Boer

International Research Center for Environment and Climate Change  
IPB University

Tsukuba, 28-29 August 2024

# PROLOGUE

- The Government of Indonesia has expressed its vision in LTS to increase its emission reduction ambitions toward NZE with international support
- Indonesia highly emphasizes the deep cut of fossil fuel in the power sector and the utilization of CCS technology and net sink role from the FOLU sector to meet the target
- FOLU sector is targeted already reach net sink by 2030



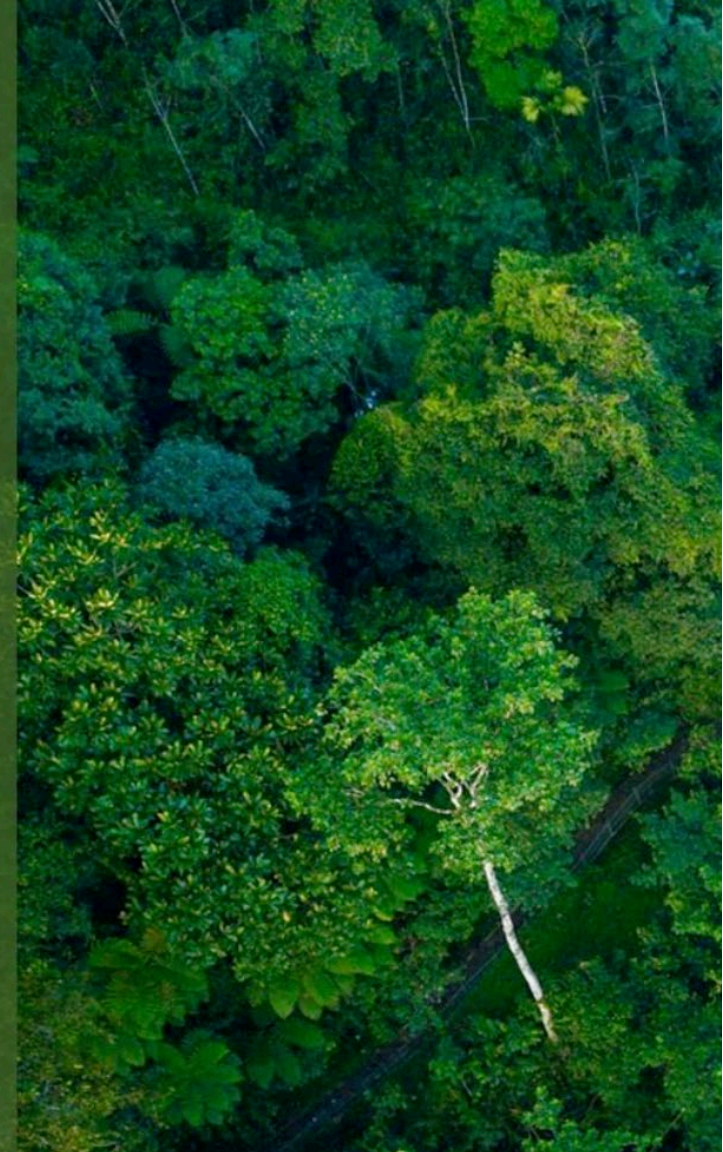
# 12 MITIGATION ACTIONS TOWARD FOLU NETSINK 2030

**FOLU Net Sink 2030 outlines the following 12 mitigation actions:**

1. Reducing deforestation rate on dry land forest ecosystems (mineral soil forests)-RO1
2. Reducing deforestation rate on peatland and mangrove ecosystems
3. Reducing forest degradation rate on primary forest
4. Establishing plantation forests
5. Enhancement of natural regeneration
6. Reduced impact logging
7. Rehabilitating degraded land with rotation
8. Rehabilitating degraded land without rotation
9. Restoring peatlands
10. Improving peat water management
11. Implementing biodiversity conservation outside conservation forest
12. Implementing mangrove rehabilitation



KEMENTERIAN  
LINGKUNGAN HIDUP  
DAN KEHUTANAN

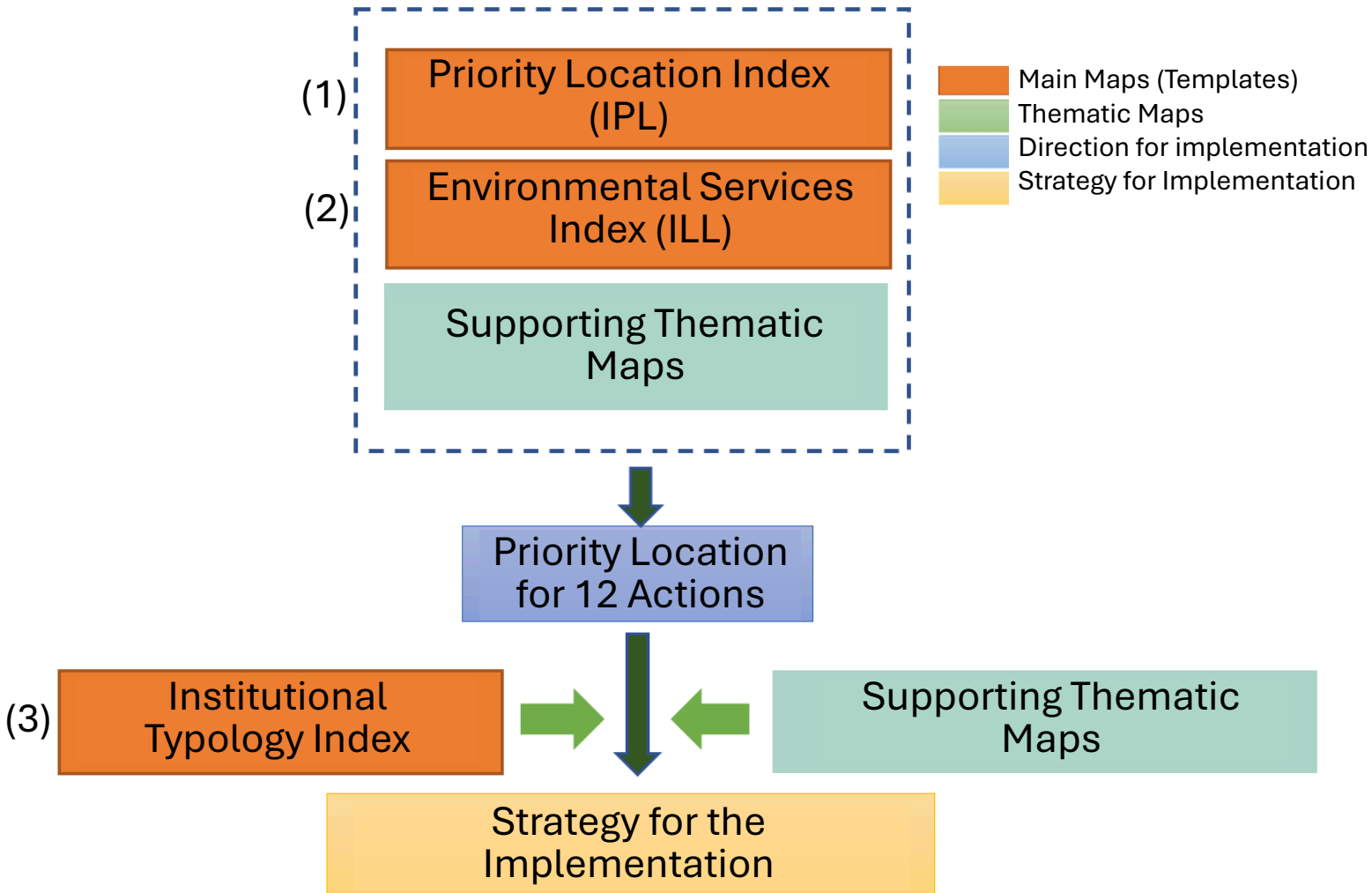


KEPUTUSAN MENTERI  
LINGKUNGAN HIDUP DAN KEHUTANAN  
NOMOR : 168/Menlhk/PKTL/PLA.1/2/2022  
TANGGAL : 24 Februari 2022

RENCANA OPERASIONAL  
**INDONESIA'S**  
**FOLU** *Net Sink*  
**2030**

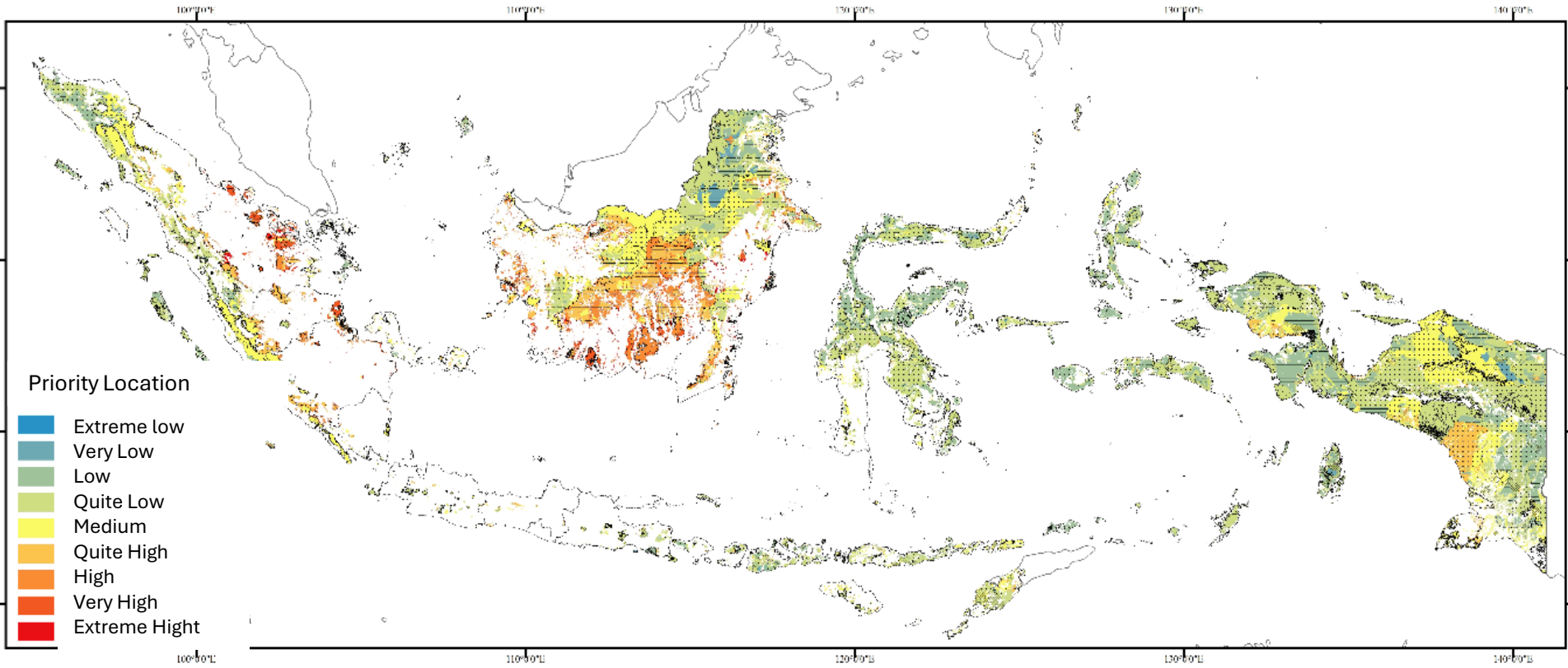
# ALOCATING LAND-BASED MITIGATION ACTIONS TO SUB-NATIONAL TOWARD INDONESIA FOLU NET SINK 2030

Provide step by step guidance on the use of the spatial template and other thematic spatial maps for prioritizing location and land-based mitigation actions at Sub-National Level based on the National Operational Plan



MANUAL PEMBACAAN DATA  
RENCANA OPERASIONAL (RENOPS)  
INDONESIA'S  
**FOLU** NET  
SINK  
2030

# Location Priority Index (IPL)

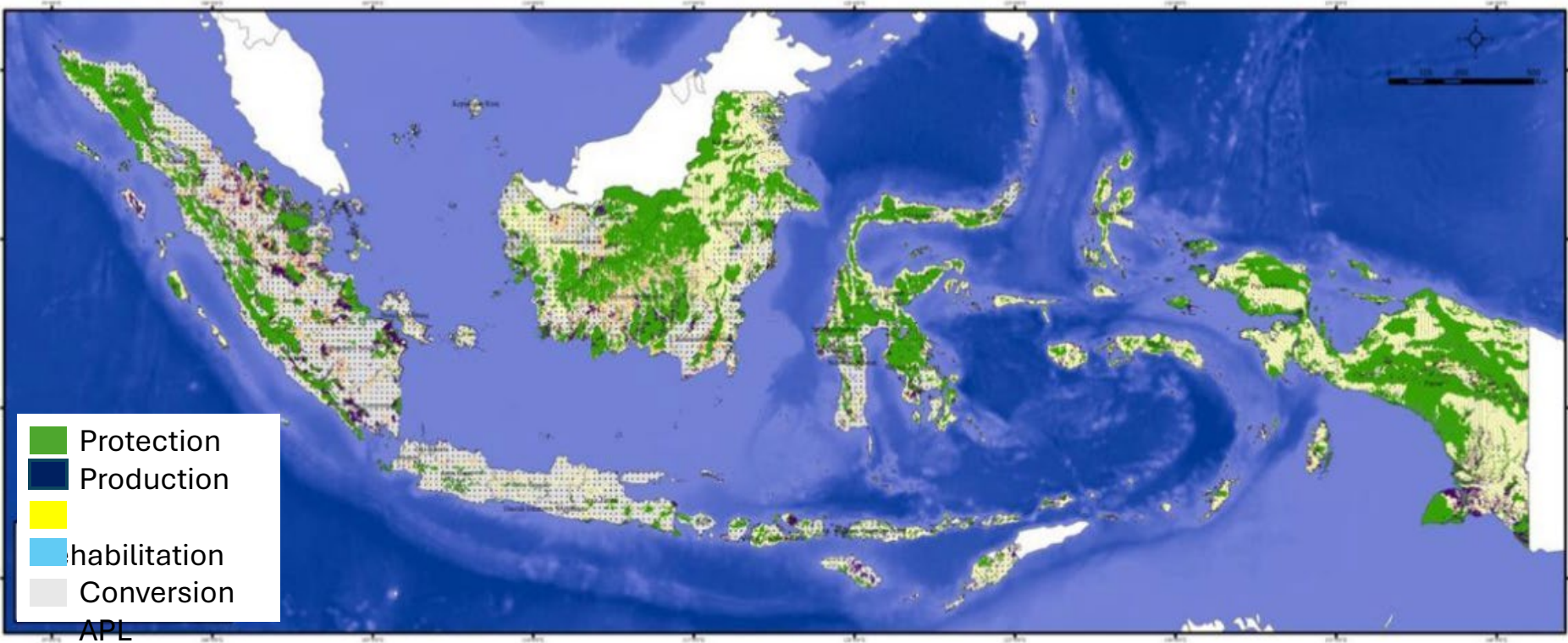


Emission Risk of Deforestation

Potential Removal Index

Land and forest Fire Risk Index

# Environmental Services Index (IJL): Directional use of forest

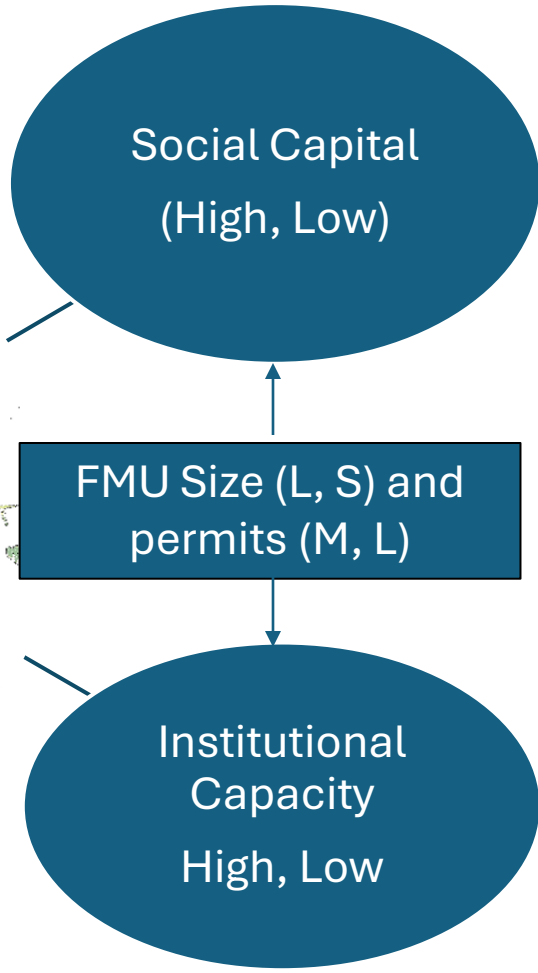
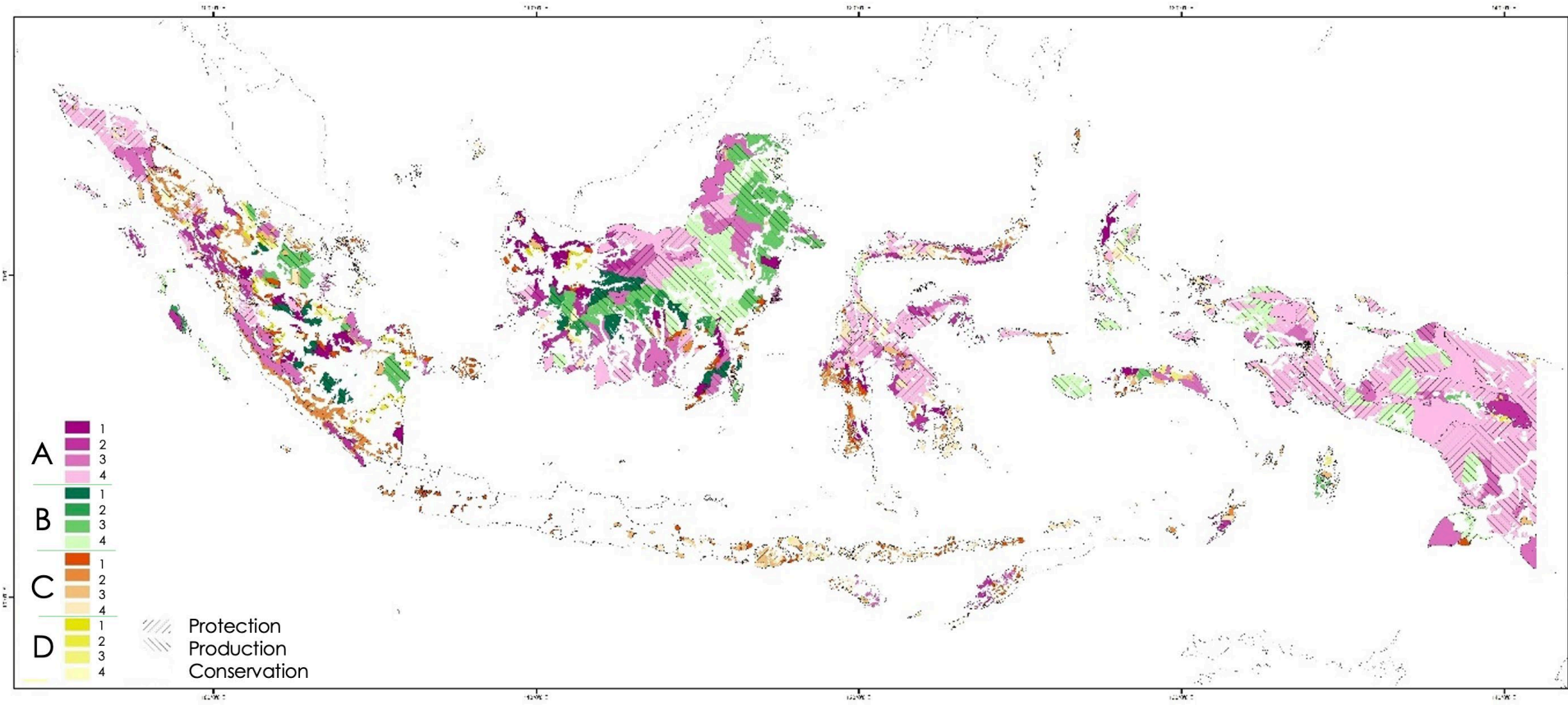


Forest Quality Index (HCS)

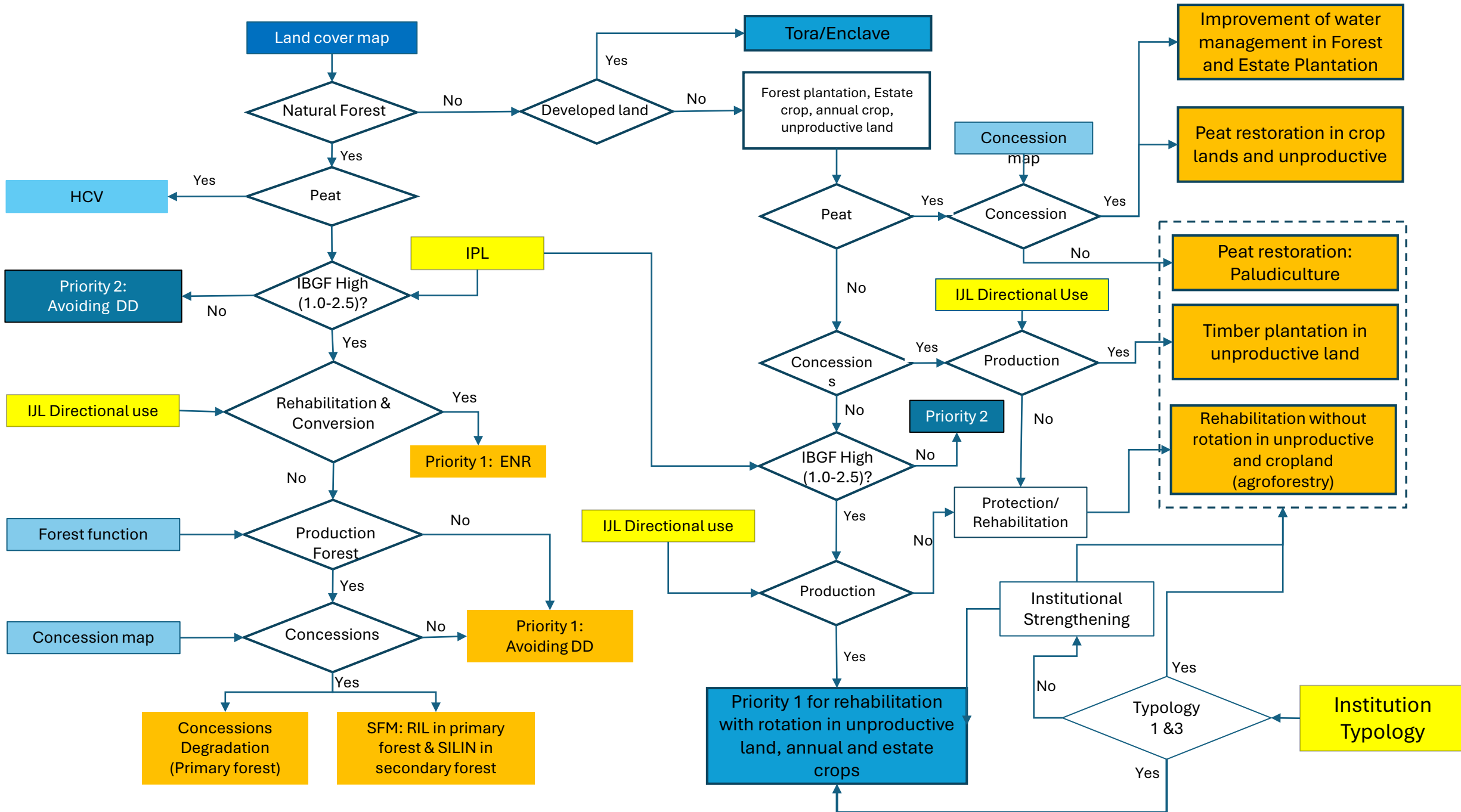
HCVF (mega fauna, essential ecosystem)

Environmental Carrying Capacity Index (DDTLH)

# Institutional Typology (TPH)



# PROCESS FOR DETERMINING ACTIONS AND PRIORITY LOCATION FOR THE IMPLEMENTATION OF THE ACTIONS





# Area for Mitigation Action Indonesia's FOLU Net Sink 2030

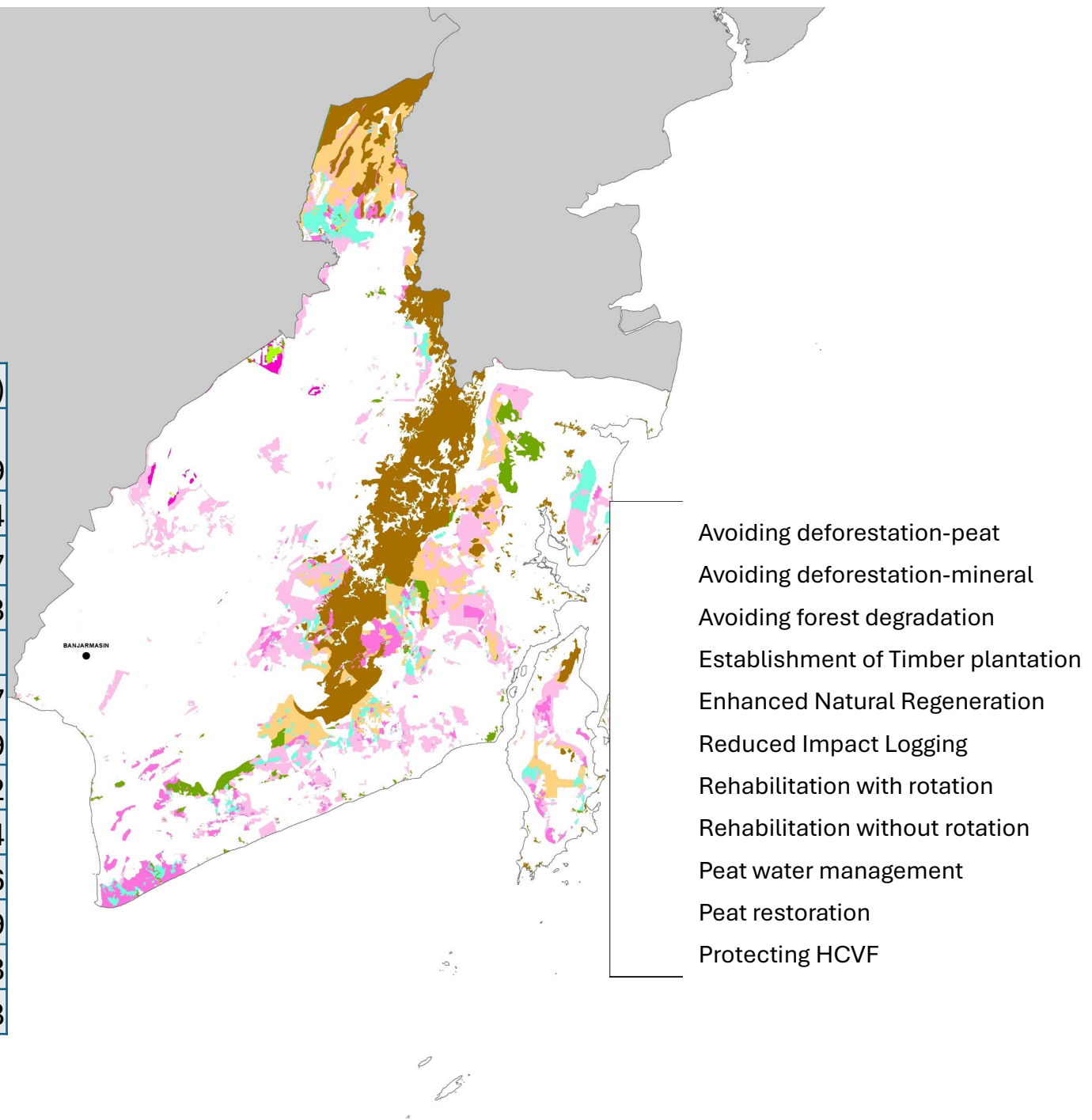
Area	Management Unit	Avoiding DD <sup>1</sup> (RO1&2)	Avoiding Deg. in concession (RO3)	SE	SFM		Sink Enhancement		Peat management		HCV <sup>5</sup>	Total <sup>7</sup>
				Timber Plantation	ENR	RIL	Rotation <sup>2</sup>	Non Rotation <sup>3</sup>	Water Mngnt	Peat Restoration		
<b>APL</b>	Local Gov-NonHGU	3.973.073	-	-	-	-	1.640.824	92.689	-	-	1.350.742	5.706.586
<b>APL – HGU</b>	Local Gov-HGU	642.685	-	-	-	-	349.600	34.499	956.682	65.769	440.471	2.049.234
<b>Conservation Forest (CF)</b>	National Park Agency	915.775	-	-	548	-	-	647.229	-	9.351	-	1.572.902
<b>Protection Forest (FP)</b>	FP-Non PS	476.196	-	-	4.597	-	-	126.185	-	-	14.128.824	606.978
	FP-PS	71.728	-	-	1.060	-	-	39.235	-	43.440	1.459.031	155.464
<b>Production Forest (PF)</b>	PF-Non PBPH	942.184	-	-	3.260	-	146.198	231.225	-	-	11.095.028	1.322.867
	Convertible PF	215.003	-	-	1.882	-	317.243	128.576	-	763	840.150	663.467
	PBPH-HPH	613.324	4.398.626	-	110.502	1.460.332	321.205	6.508	-	18.772	5.460.254	6.929.270
	PBPH-HTI	1.974.995	233.885	1.346.427	118.953	64.122	1.243.630	383.201	718.021	210.408	1.443.708	6.293.643
	KPHP-PS	324.310	-	697.901	2.627	-	77.730	177.058	-	147.428	1.750.410	1.427.053
	PBPH-RE	326.313	58.130	-	2.859	-	22.768	20.596	-	9.209	360.930	439.874
<b>BRGM</b>		-	-	-	-	-	-	-	-	1.382.019	-	1.382.019
<b>TOTAL</b>		10.475.586	4.690.641	2.044.328	246.288	1.524.454	4.119.197	1.887.000	1.674.703	1.887.159	38.329.548	28.549.356
<b>TARGET Indonesia FOLU 2024<sup>1</sup></b>		3.142.141	1.705.000	9.307.332		1.413.203	1.951.493	1.756.344	785.439	1.996.762		
<b>TARGET Indonesia FOLU 2030<sup>1</sup></b>		4.225.877	2.282.500	11.227.332		2.207.061	2.787.847	2.509.062	946.050	2.724.866		

Note: <sup>1</sup>Natural Forest situated in high-risk area for deforestation and fire, <sup>2</sup> Unproductive lands located in area with directional use for production, and <sup>3</sup> with directional use for protection

Source: MoEF, 2022

# Priority Location and Land-based Mitigation Actions Toward FOLU Net Sink 2030 in South Kalimantan province

Mitigation Actions	Area (Ha)
RO1: Avoiding deforestation of mineral and mangrove forest	48,829
RO2: Avoiding deforestation of peat forest	2,444
Ro3: Avoiding forest degradation in concession	447
RO4: Establishment of Timber Plantation	70,648
RO5: Enhancement of Natural regeneration	180,791
RO6: Reduce Impact Logging (RIL-C)	447
RO7: Land Rehabilitation with rotation	305,469
RO8: Land Rehabilitation without rotation	90,422
RO9: Peat Water management	64
RO10: Peat Restoration	7,176
RO11: High Conservation value Forest	383,289
RO12: Mangrove Restoration	6,123
<b>Total</b>	<b>1,096,148</b>



# DEVELOPMENT OF PROVINCIAL WORKPLAN ON FOLU NET SINK

- 2022: 12 Provinces completed the development of Workplan for FOLU Net Sink
- 2023: The remaining provinces completed development of the workplan



# EPILOGUE

1. Change the direction of forest management which initially only focused on timber management to forest landscape management through *Multi Business Forest* (MUK)
2. Resolve conflicts related to forest tenure cases  
→ Implement community-based forest management by providing access to community to manage forest through the ***social forestry*** and ***forest/concession partnership*** program
3. Internalize the principles of environmental carrying capacity in the preparation of National Forestry Plan as a macro spatial direction for forestry development and
4. Implement a "green economy" policy, balancing the added economic value of forestry businesses and the use of environmental services while maintaining forest sustainability and environmental quality as well as ecosystem balance to achieve sustainable development

## PEDOMAN KEGIATAN MULTIUSAHA KEHUTANAN PADA PERIZINAN BERUSAHA PEMANFAATAN HUTAN



Kementerian Lingkungan Hidup dan Kehutanan  
Direktorat Jenderal Pengelolaan Hutan Lestari  
Direktorat Pengendalian Usaha Pemanfaatan Hutan

2022

**BerAKHLAK**  
Berorientasi Pelayanan, Akuntabel, Kompeten,  
Harmonis, Loyal, Adaptif, Kolaboratif

**#bangga  
melayani  
bangsa**