



# Macroeconomic impact of agricultural Heat-Stress

Di Sheng, Xin Zhao, Jae Edmonds, Pralit Patel, Stephanie Morris

Pacific Northwest National Laboratory

31<sup>st</sup> AIM International Workshop

Tsukuba, JAPAN

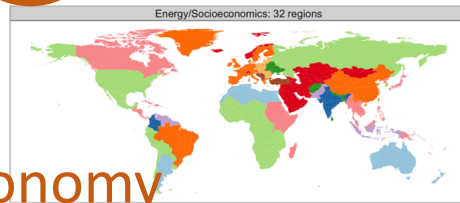
July 2025

**DRAFT—Comments Welcome—Do not quote or cite**

# The Five Major Modules of GCAM

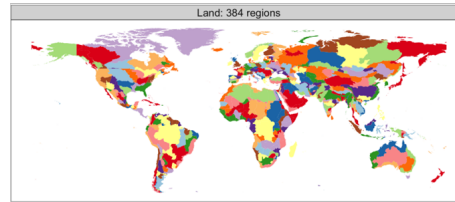
1

Energy  
32 regions



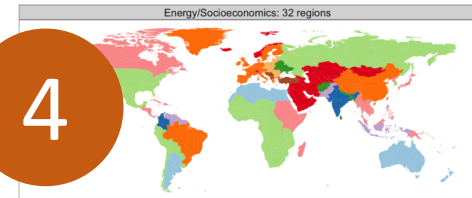
Agriculture-  
Land-Use  
384 regions

2



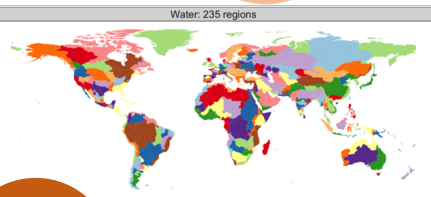
Macroeconomy

4



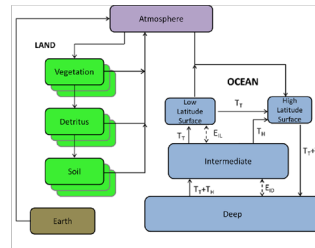
32 regions

Coupled  
in Code



3

Water  
235 regions



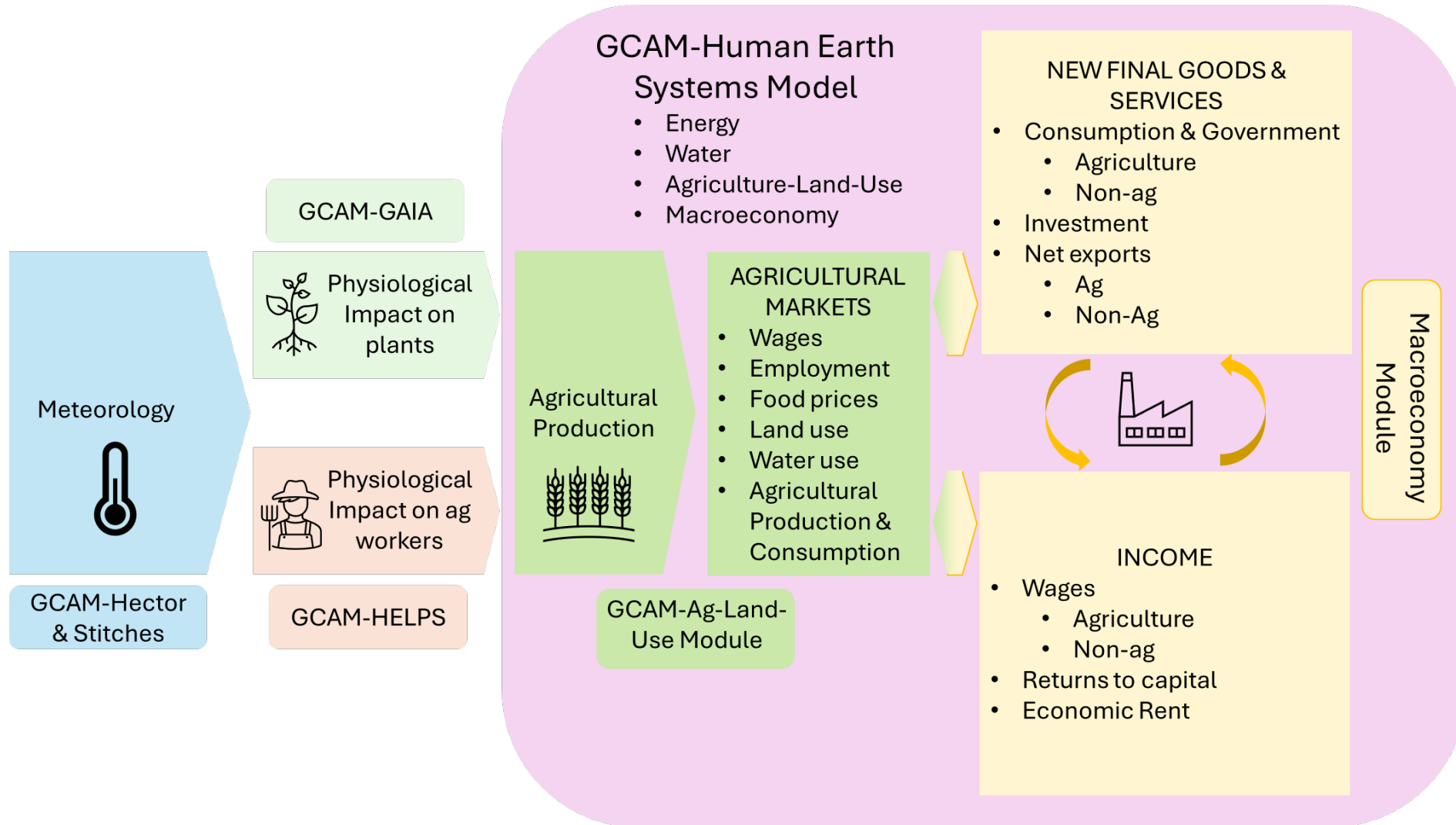
Physical Earth  
Systems  
Global

5

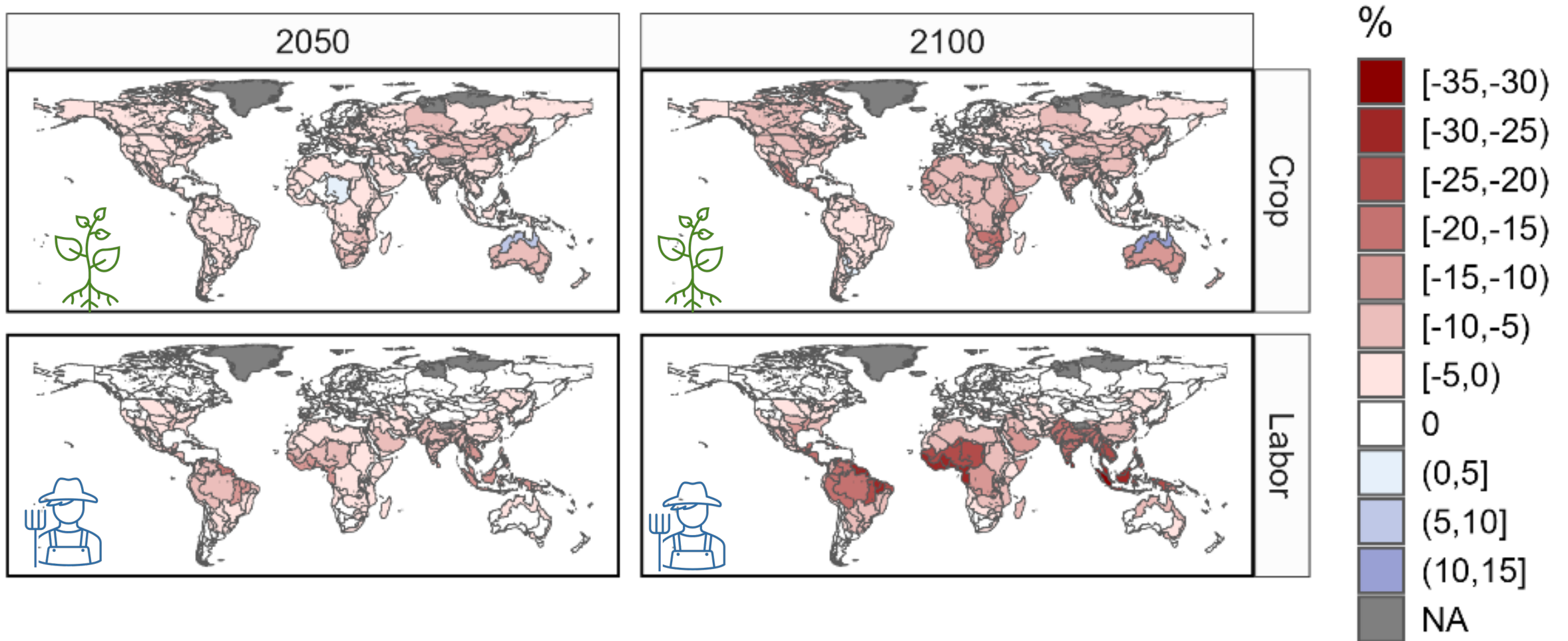
## GCAM Characteristics

- Economic model—supplies and demands in markets are equilibrated by prices
- Dynamic-recursive, (NOT optimization).
- Simultaneously resolves **energy**, **land**, **water**, and **economic** markets, and **physical Earth systems** it solves in a **single unified code**.
- The macroeconomy is in general equilibrium
- **Hierarchical Model**

# Approach to Modeling Agricultural Heat-Stress

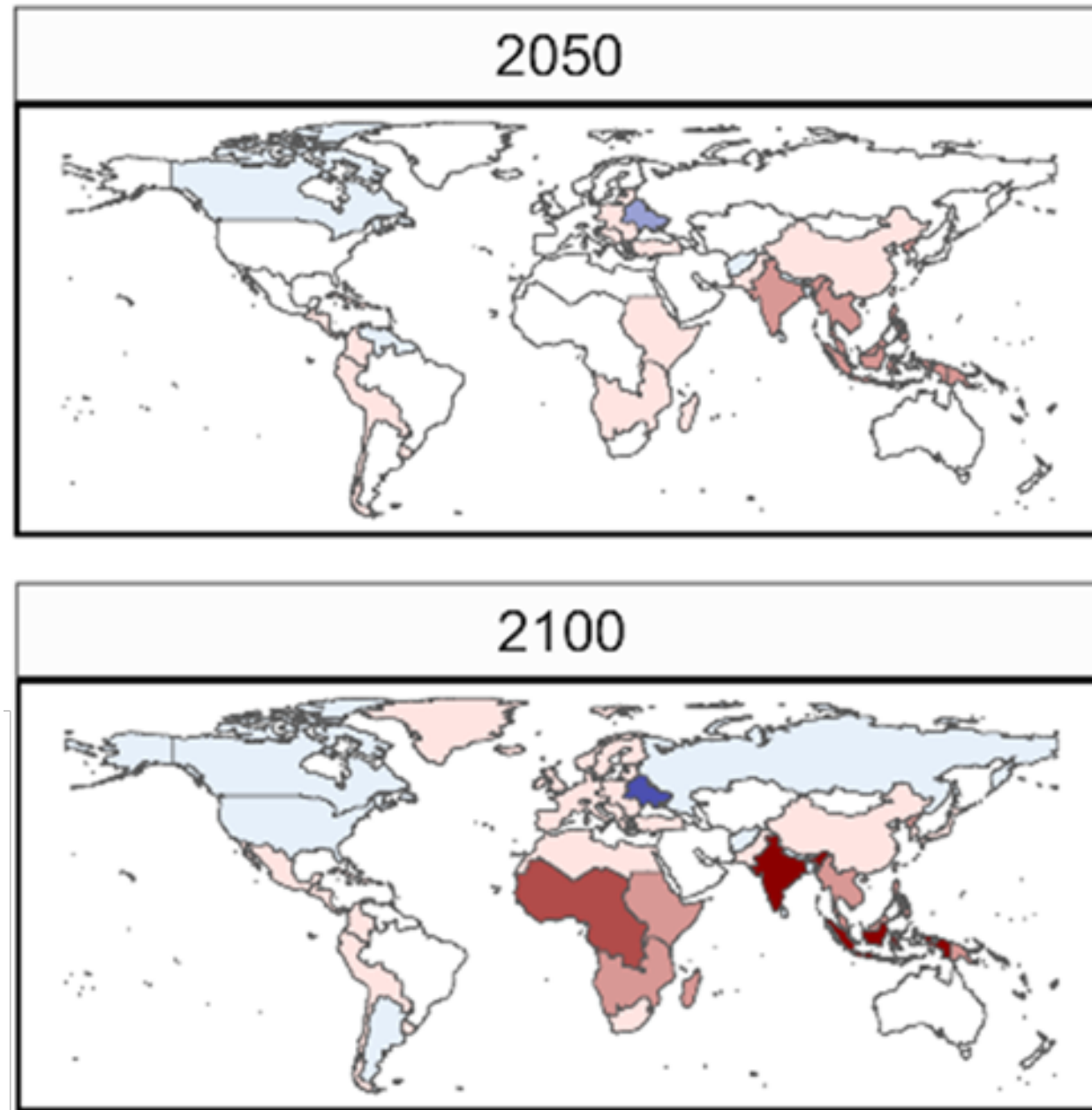


# Biophysical shock in labor productivity and crop yield in 2100

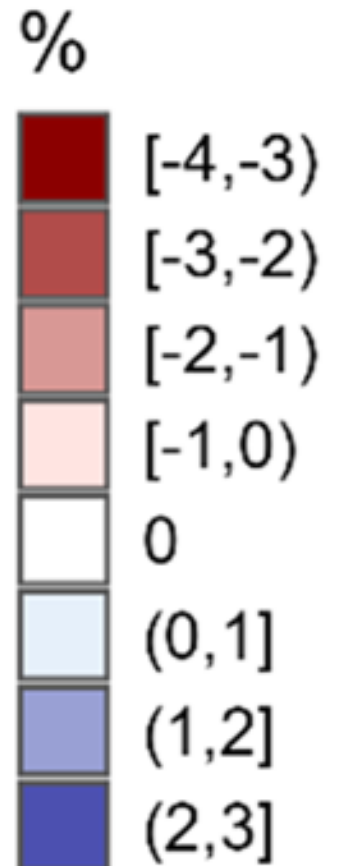


\$

Relative  
changes in  
GDP (Ref=0)  
in 2100

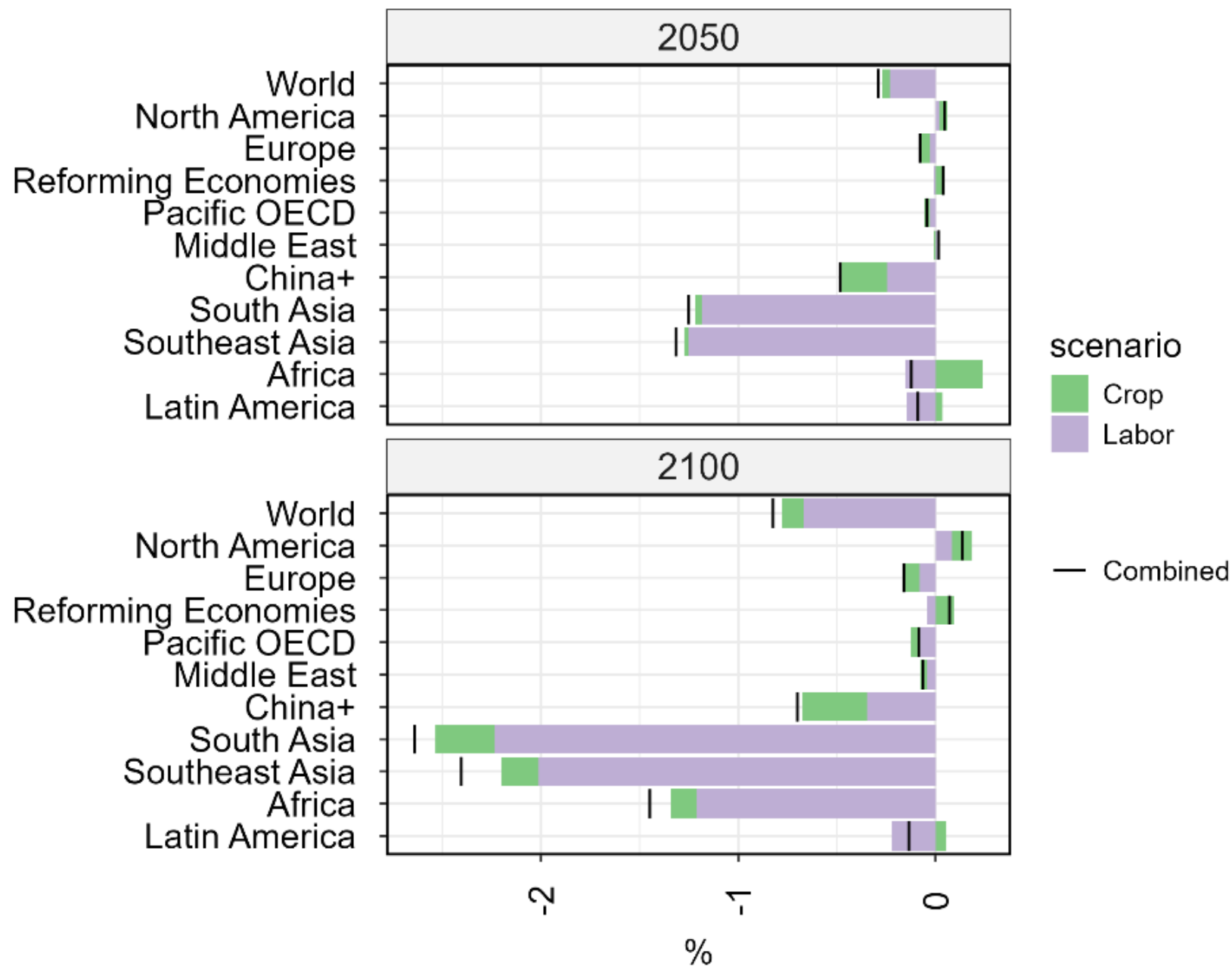


Combined

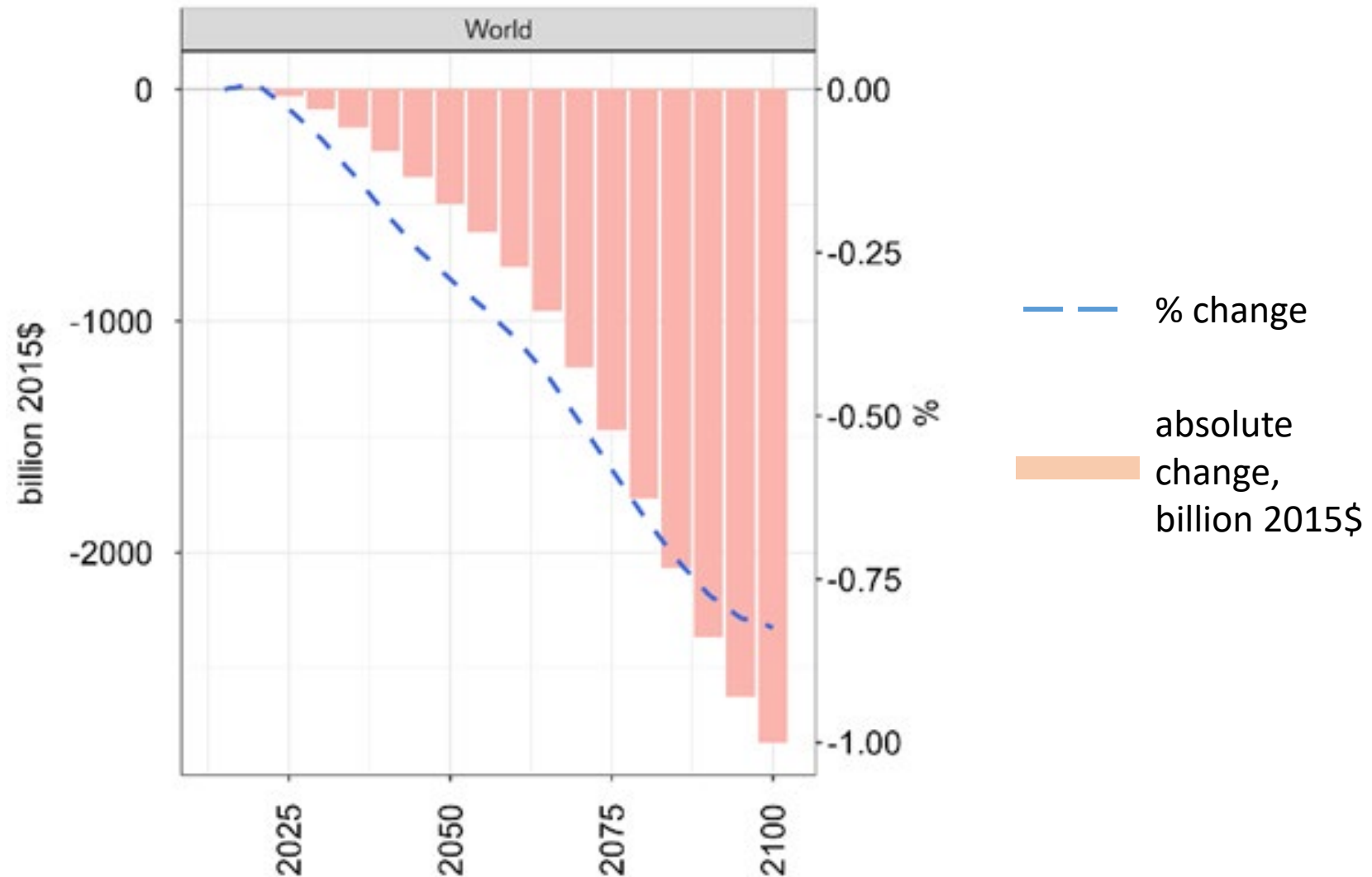


\$

GDP  
response  
through  
alternative  
heat stress  
pathways:  
Crops,  
Labor

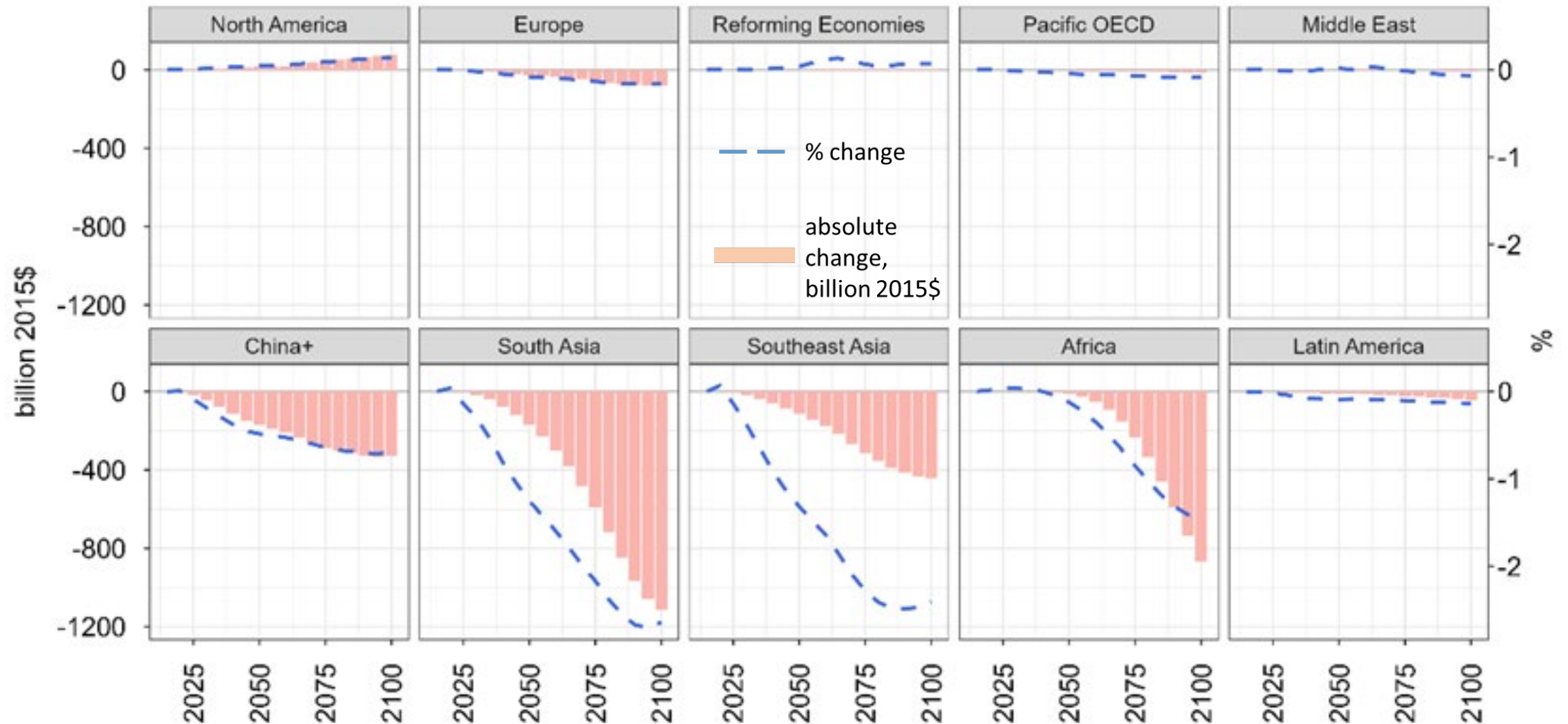


## Relative and absolute changes (Ref = 0) in GDP over time





## Relative and absolute changes (Ref = 0) in GDP over time

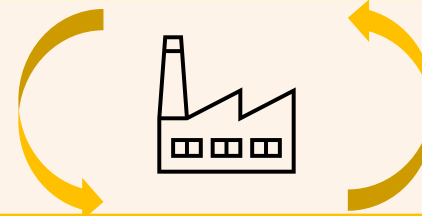




# Decomposition of absolute GDP changes: Factor Rewards

## NEW FINAL GOODS & SERVICES

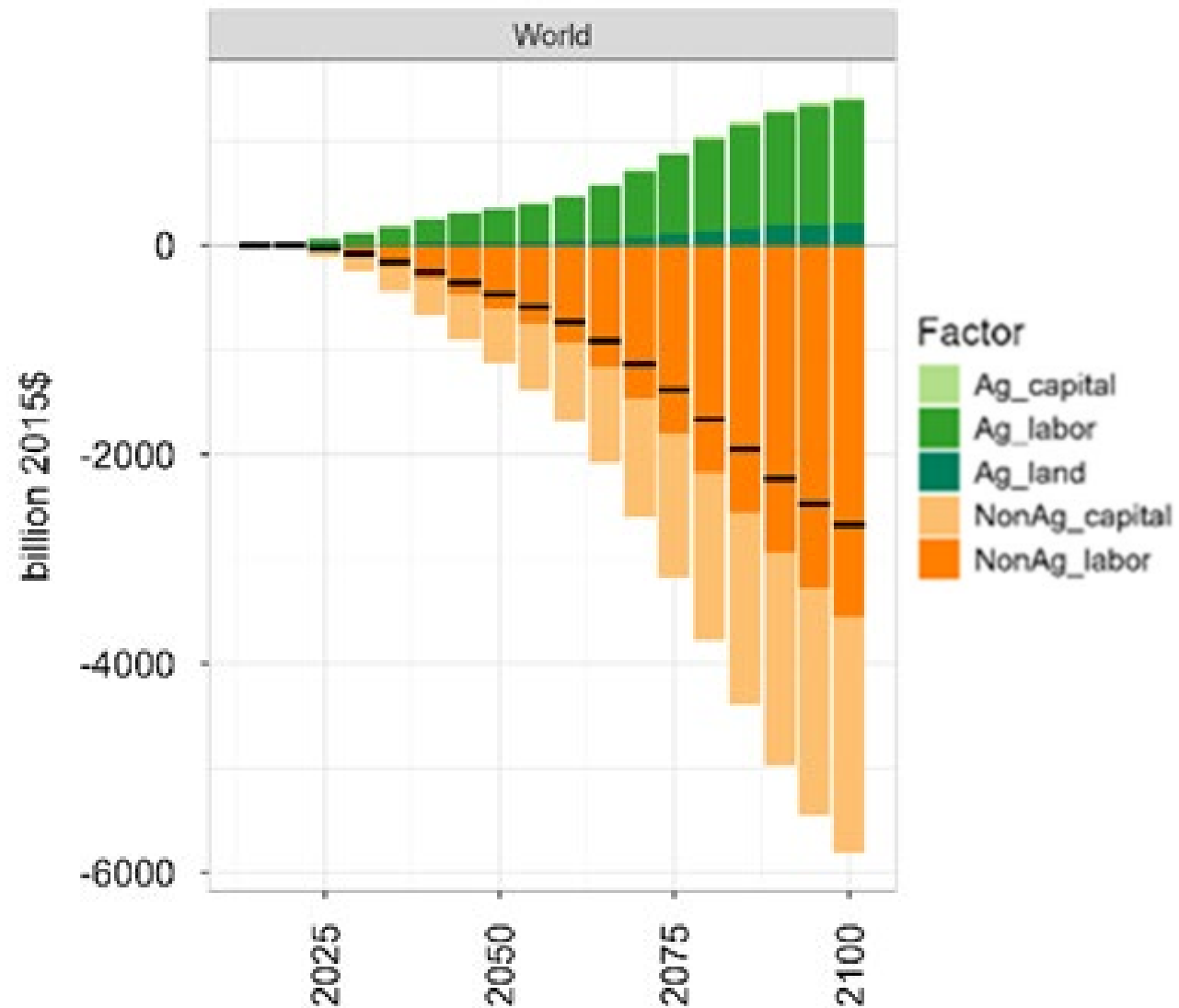
- Consumption & Government
  - Agriculture
  - Non-ag
- Investment
- Net exports
  - Ag
  - Non-Ag



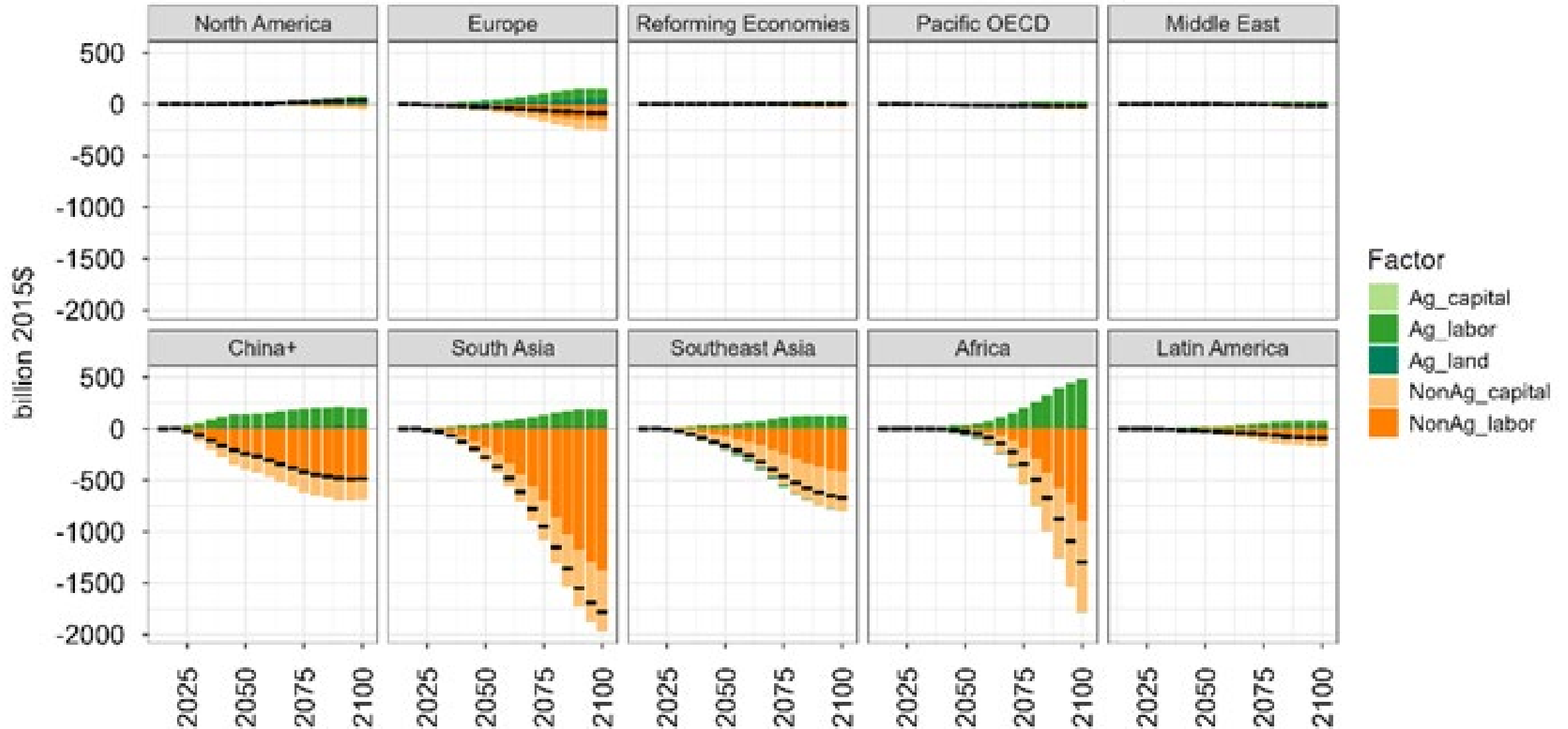
## FACTOR REWARDS

- Wages
  - Agriculture
  - Non-ag
- Returns to capital
- Economic Rent

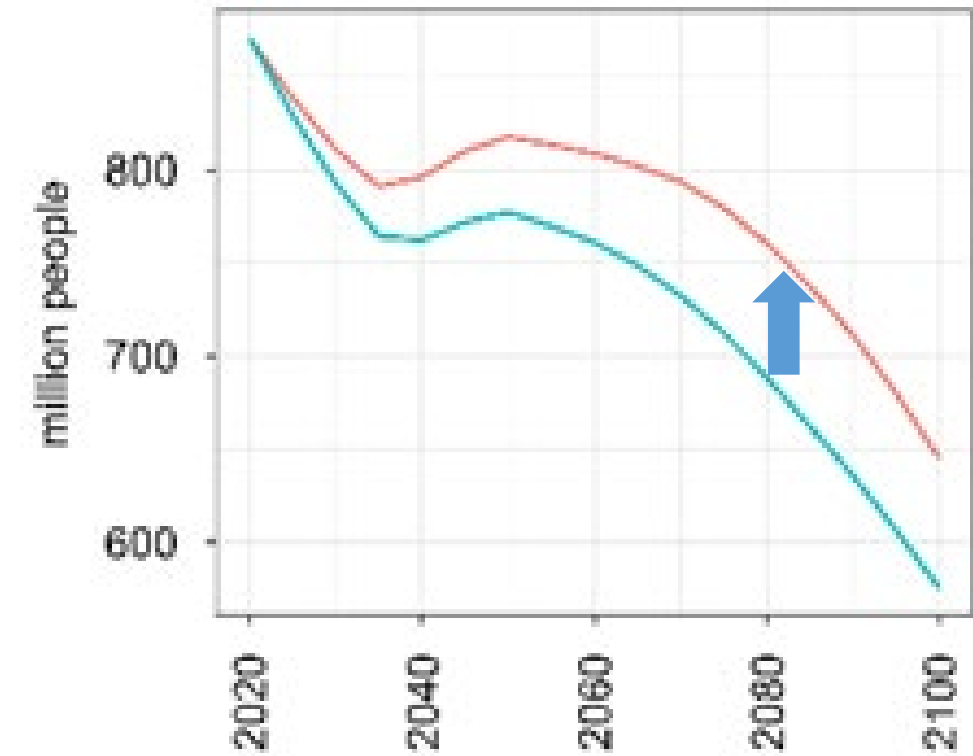
# Decomposition of absolute global GDP changes: Factor Reward Approach



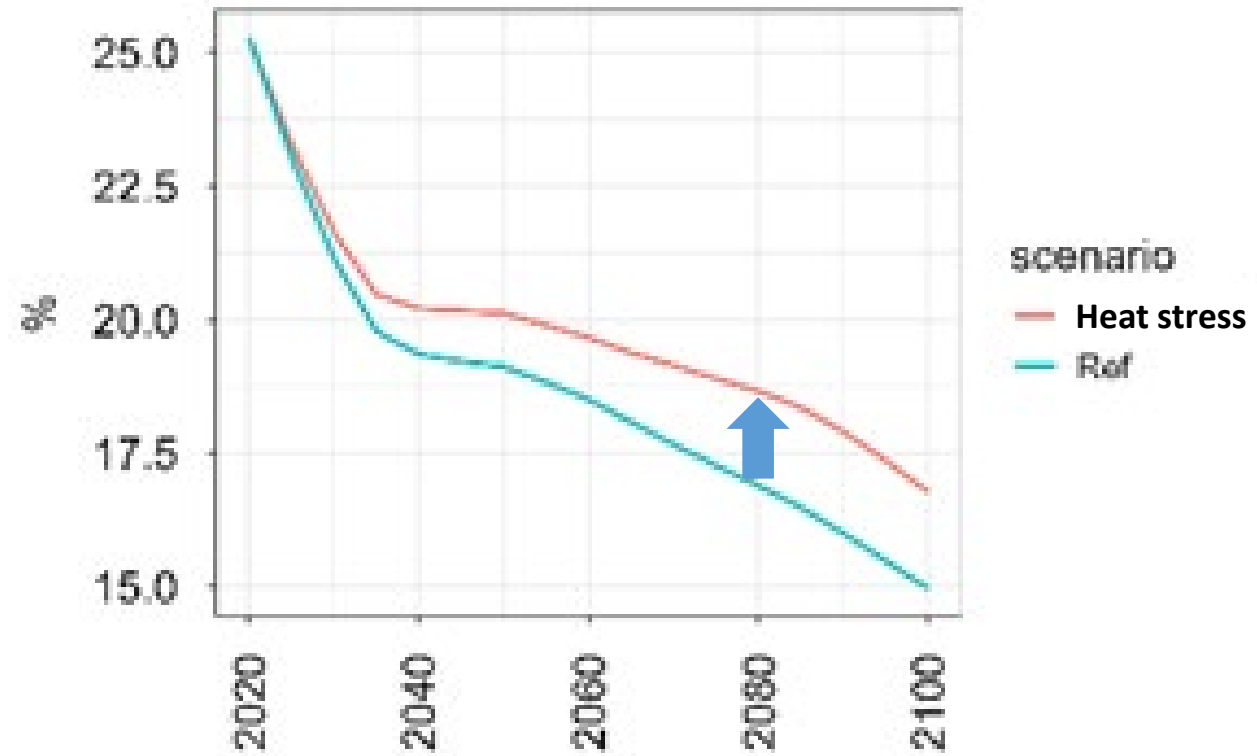
# Decomposition of absolute regional GDP changes: Factor Reward Approach



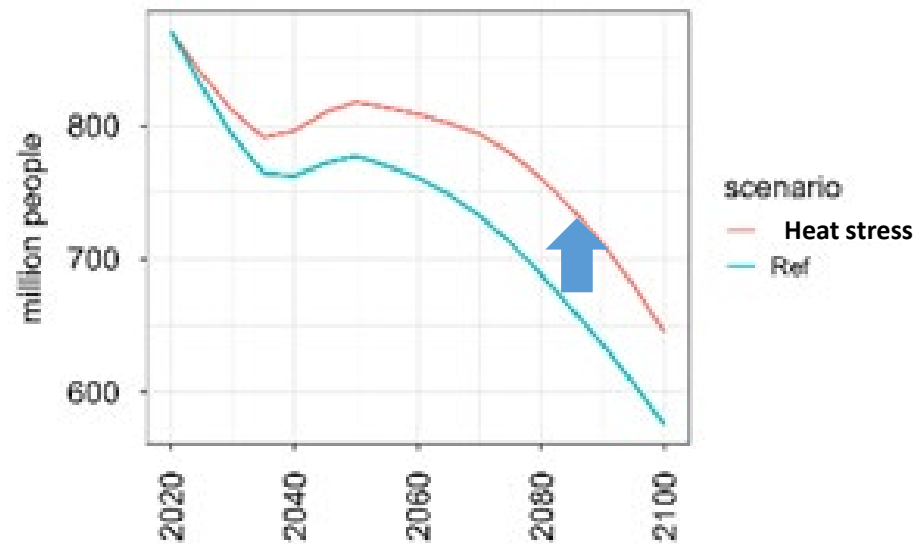
# Global agricultural labor



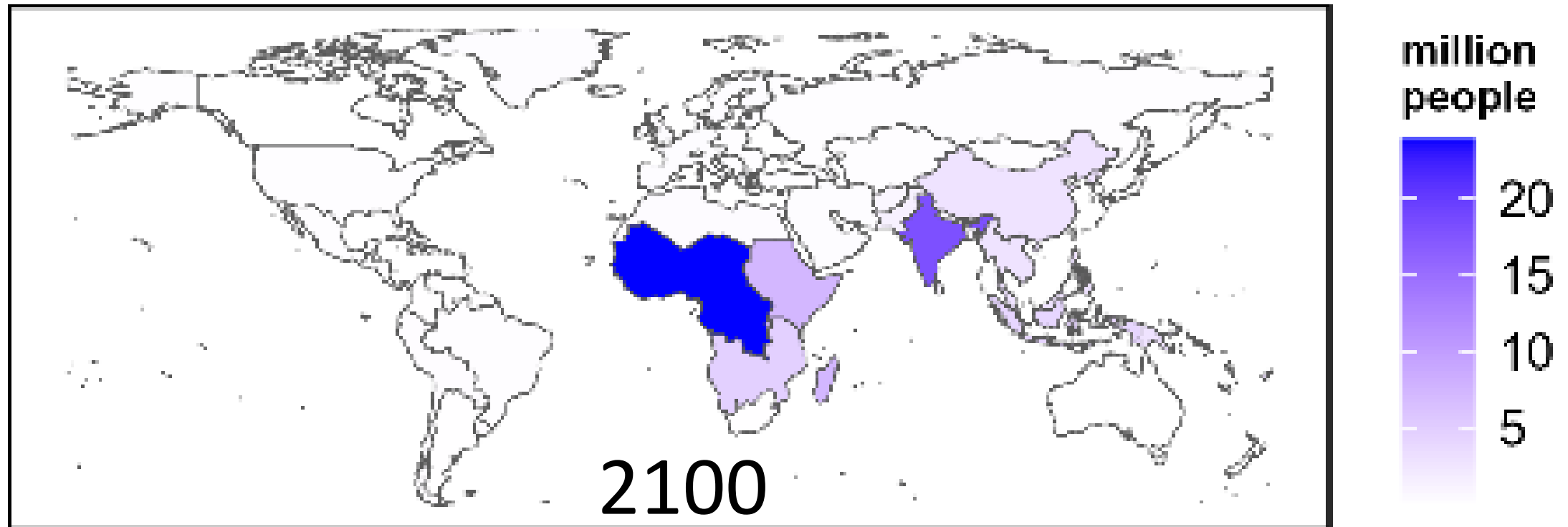
scenario  
Heat stress  
Ref

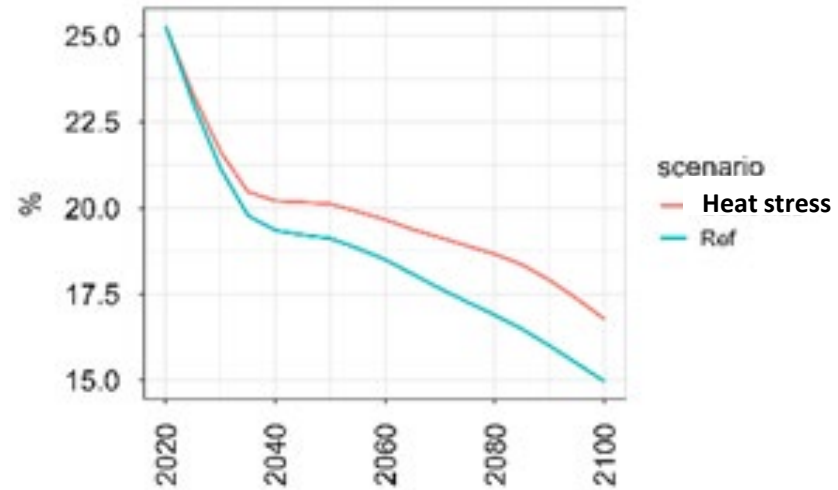


scenario  
Heat stress  
Ref

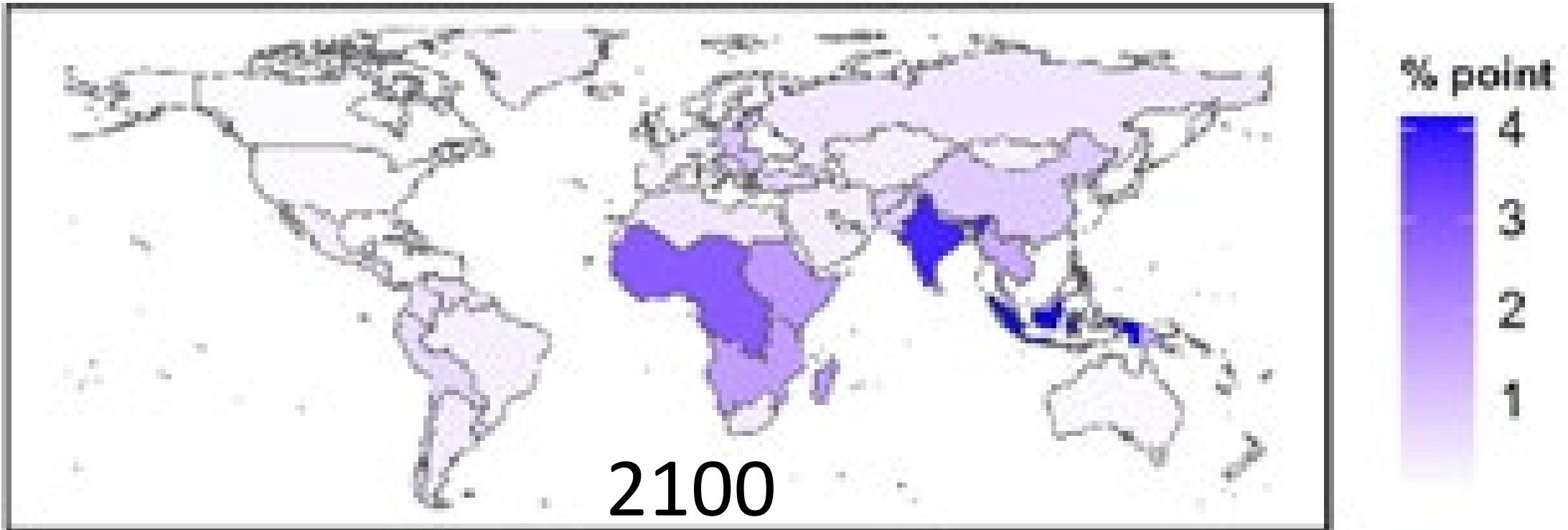


Absolute changes in  
agricultural labor

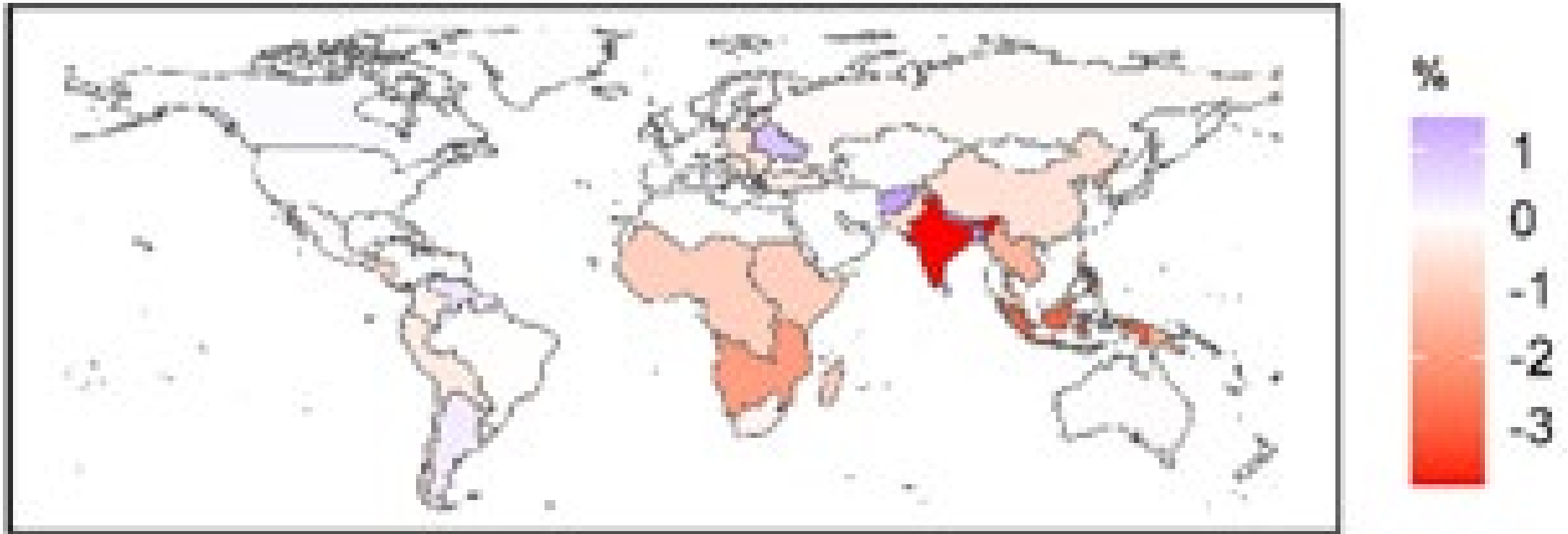




## Changes in the agricultural labor share of the total labor force

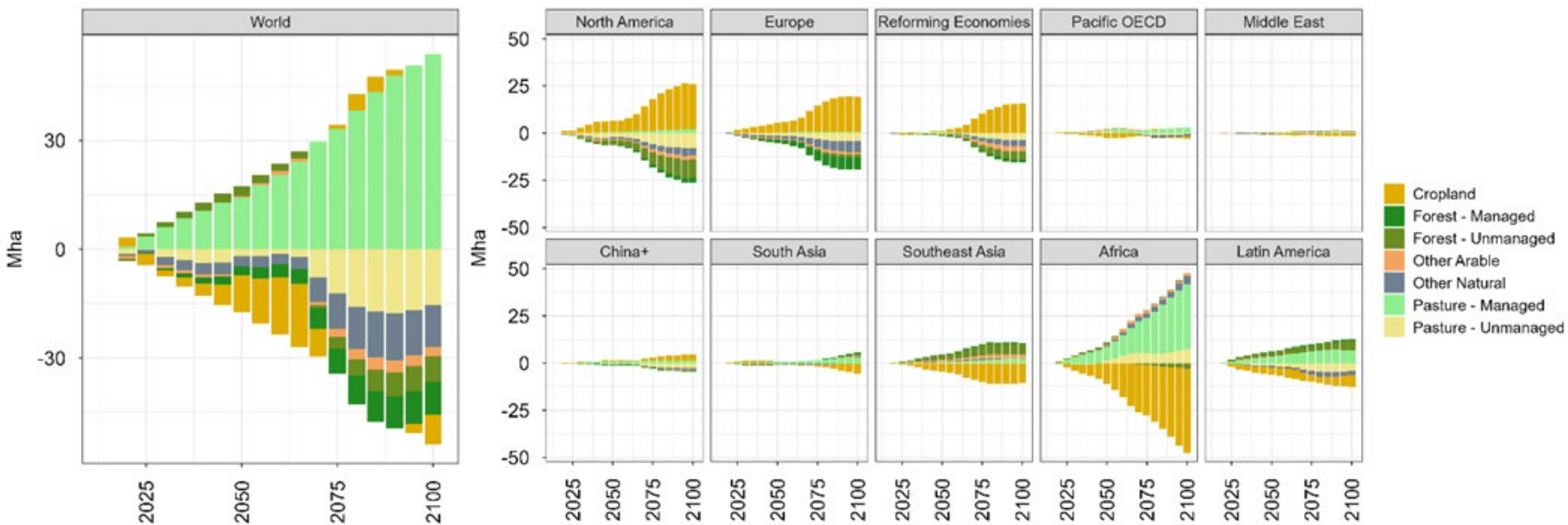


## Relative changes in total return to labor from heat stress

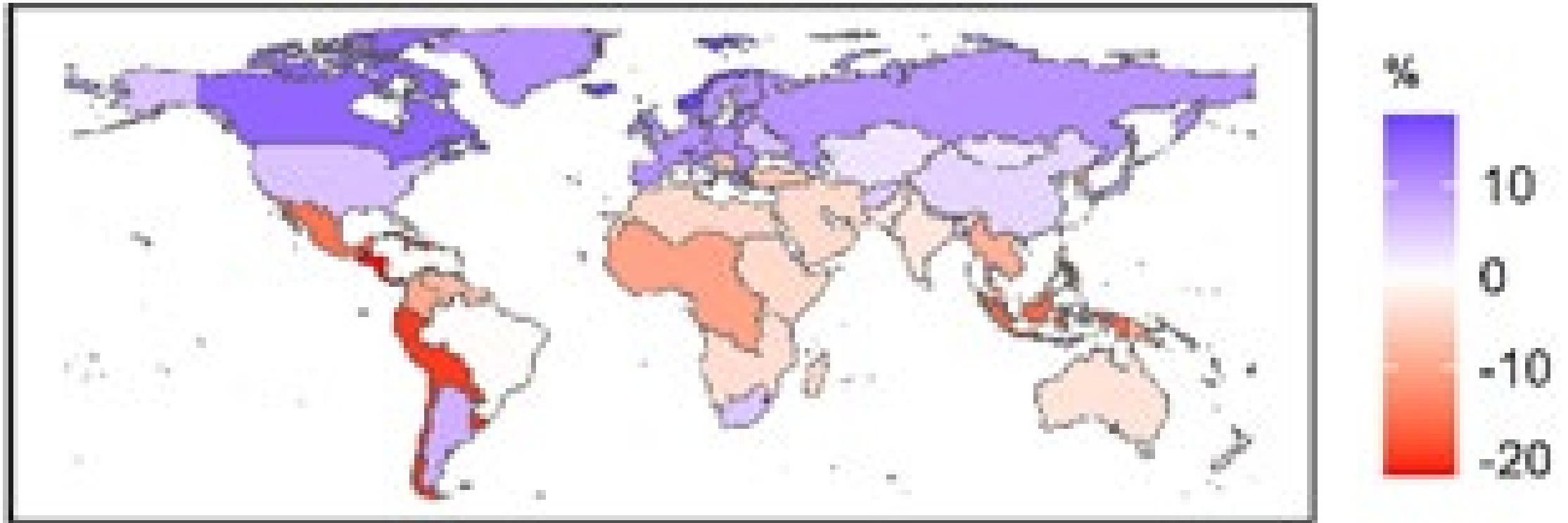




# Absolute land use change due to heat stress



## Relative changes in cropland due to heat stress



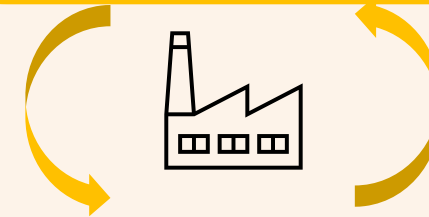
# Decomposition of absolute GDP changes: New, Final Goods & Services

## NEW FINAL GOODS & SERVICES

### Consumption & Government

- Agriculture
- Non-ag
- Investment
- Net exports

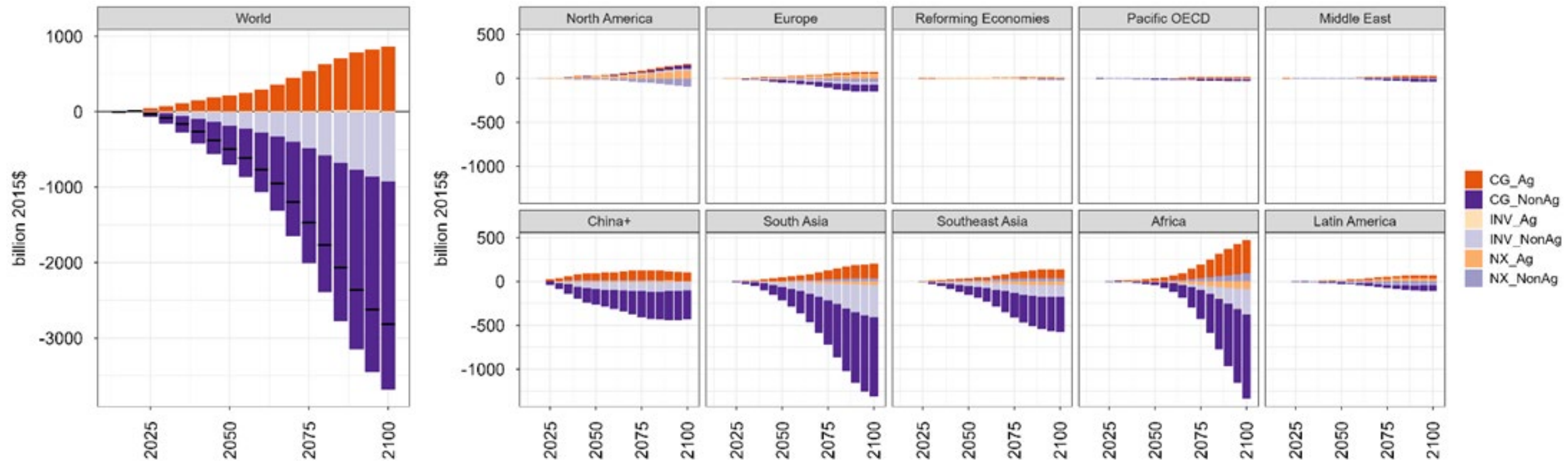
- Ag
- Non-Ag



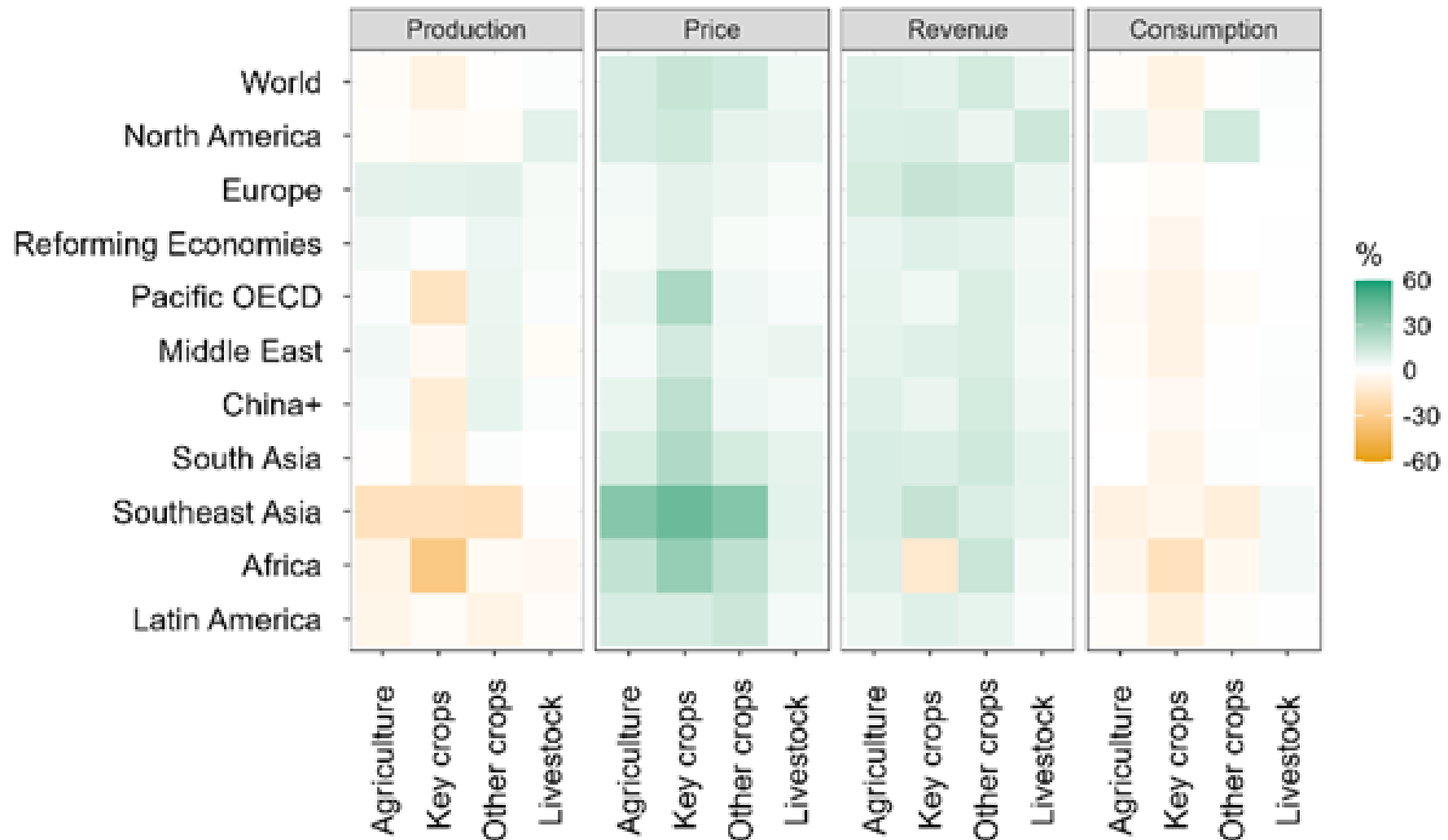
## FACTOR REWARDS

- Wages
  - Agriculture
  - Non-ag
- Returns to capital
- Economic Rent

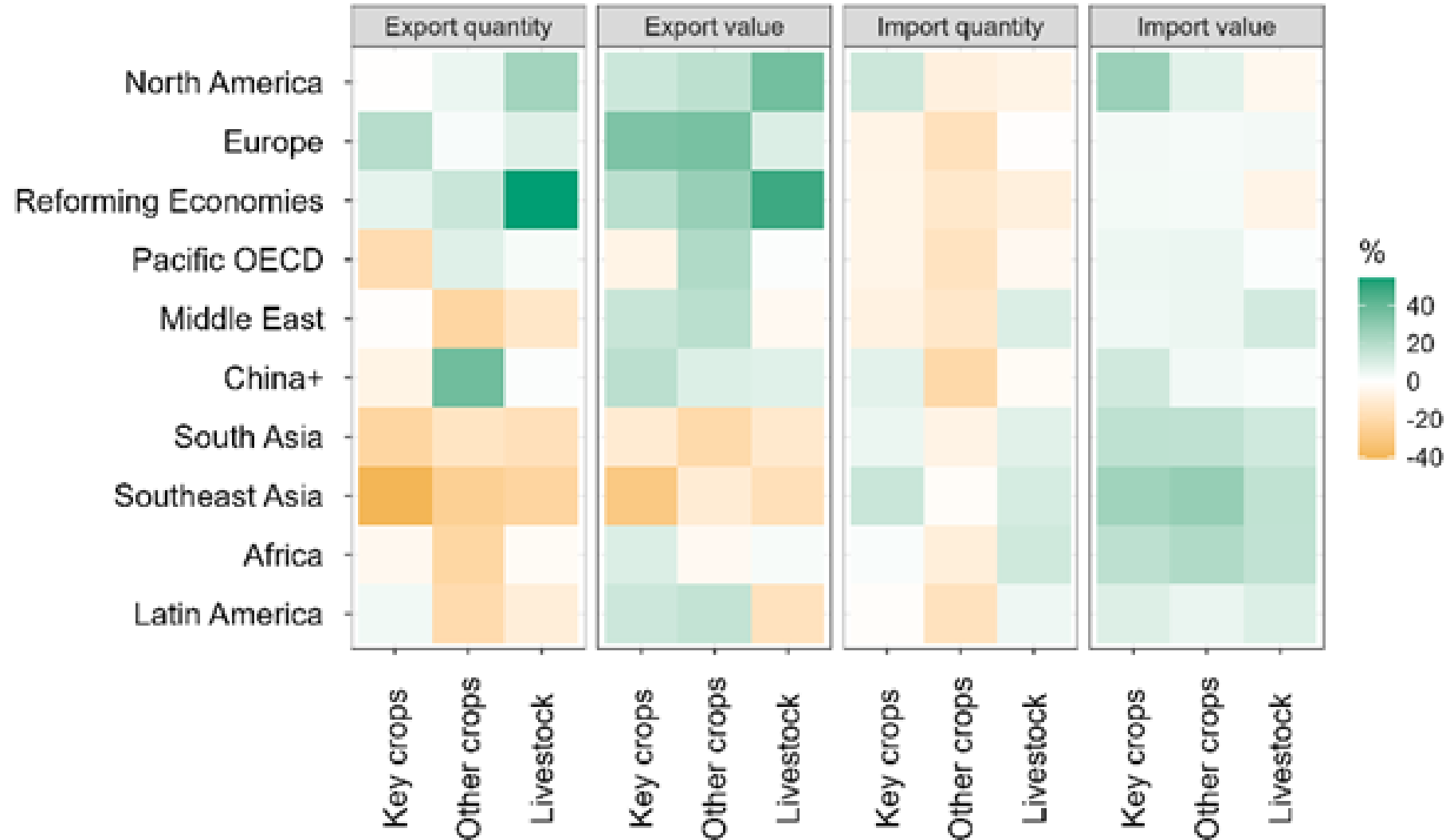
# Decomposition of absolute GDP changes the composition of new, final goods and services due to heat stress



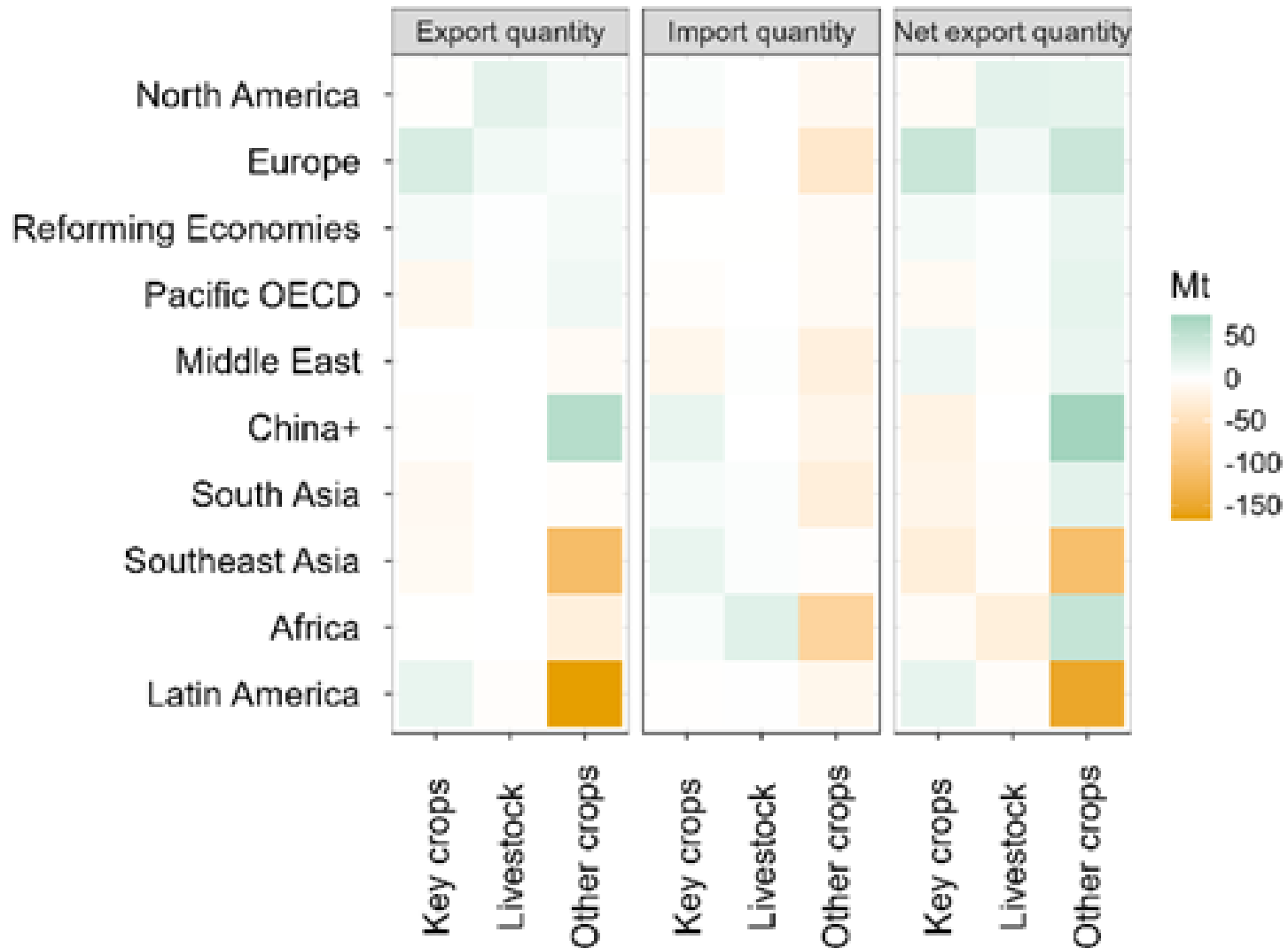
# Relative changes in agricultural market outcomes



# Relative changes in agricultural trade outcomes

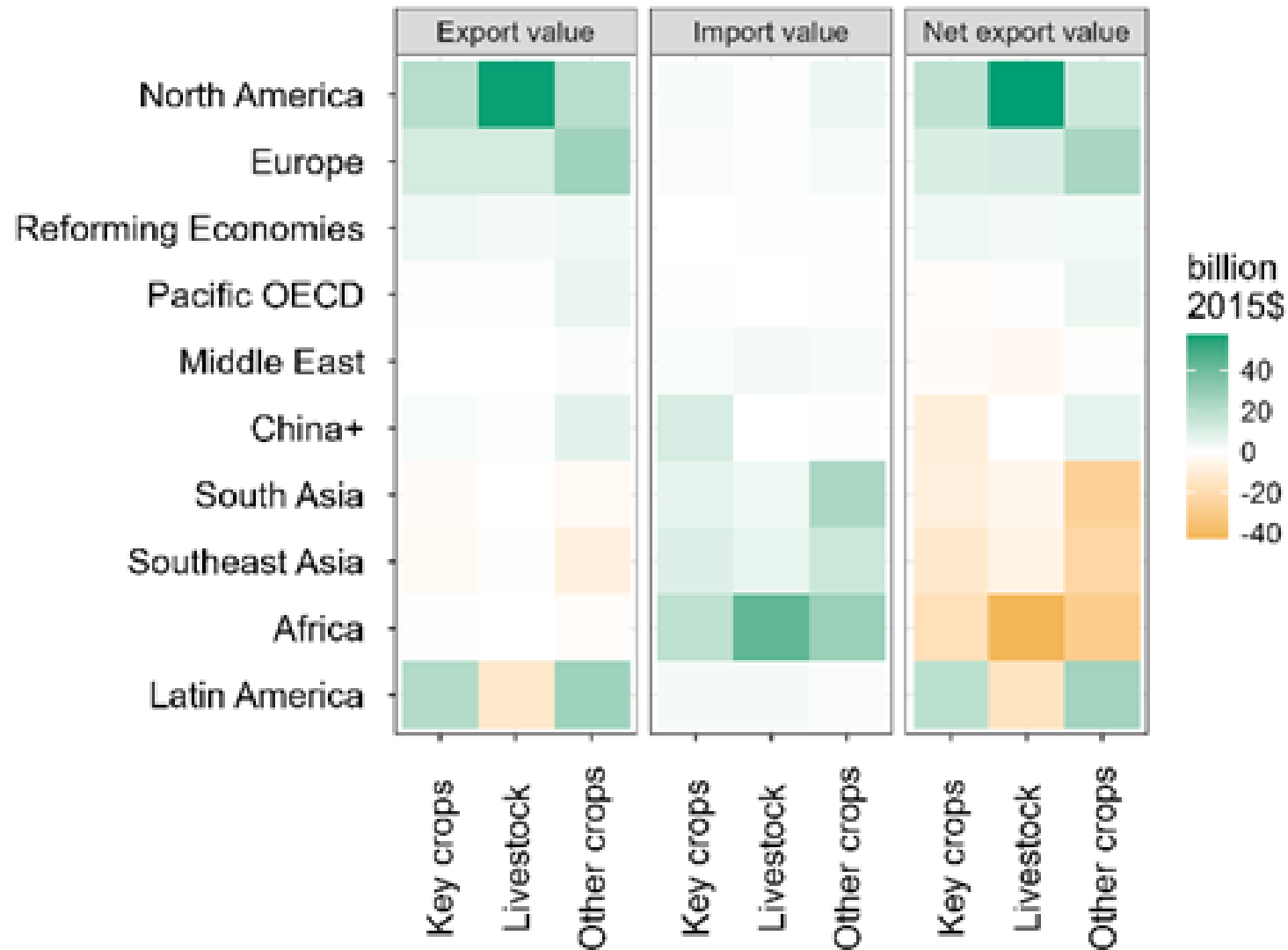


# Absolute changes in agricultural trade volume





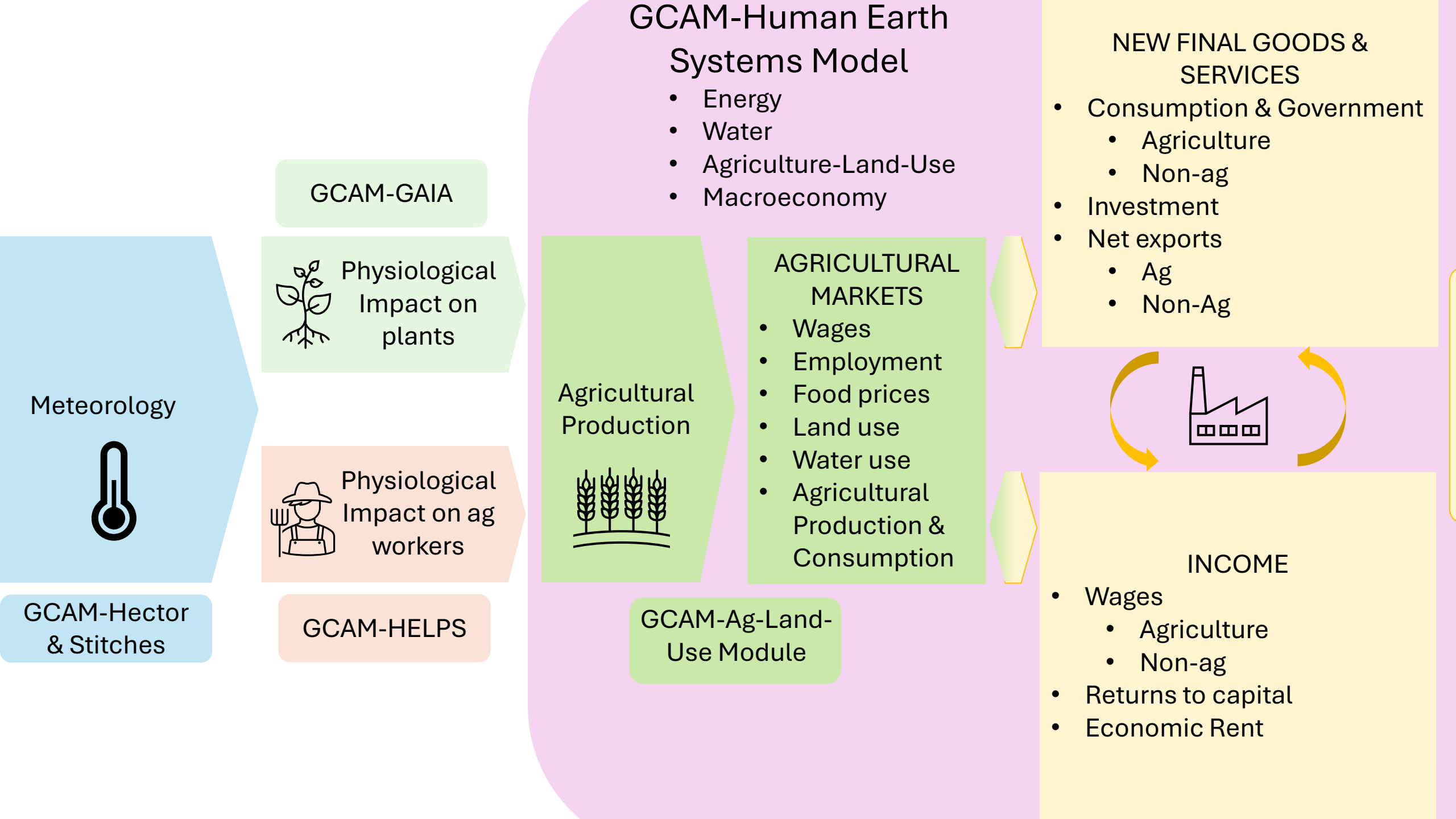
# Absolute changes in agricultural trade value



## Key Findings

- Agricultural Heat Stress reduces Global GDP and disproportionately in tropical regions.
- The preponderance of GDP loss comes through lost agricultural labor productivity.
- Labor is shifted toward the agricultural sector to make up for lost productivity.
  - Agricultural wages per hour worked rise.
  - Aggregate returns to labor decline.
- The value of agricultural output increases.
  - Higher prices more than offset reduced production.
- The value of agricultural sector exports declines in tropical regions and rises in temperate regions.

# DISCUSSION



## Relative changes in GDP (Ref=0) in 2100

